

Installation & CARE

2015-2019 SUBARU WRX SWITCHBACK SEQUENTIAL LED TAIL LIGHTS INSTALLATION INSTRUCTIONS

BEFORE INSTALLATION:

- If you experience any difficulties that the instructions did not cover, please seek assistance at a local automotive shop.
- Please wear proper protective equipment before you work on any vehicle.
- An assistant is recommended when removing the front bumper from your vehicle.
- Please be cautious when working with the bumper or any parts belonging to the vehicle's body to prevent scratching.
- Do not make direct contact with the halogen bulbs or the wire assembly until the unit has cooled down after use.

TOOLS AND SUPPLIES REQUIRED

3/4" Ratchet	8 mm socket	Plastic Pry bar	Trim Pad Remover

PRODUCT NUMBER

LT-WRX15JMLED-SQ-TM
 LT-WRX15BBLED-SQ-TM
 LT-WRX15BKLED-SQ-TM
 LT-WRX15RLED-SQ-TM
 LT-WRX15GLED-SQ-TM



LET'S START THE INSTALLATION



STEP 1
Remove the three plastic clips



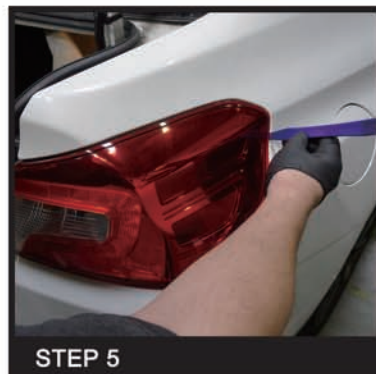
STEP 2
Remove the trunk trim panel cover



STEP 3
Remove the three plastic clips and pull out the trunk side liner cover to access the back of the tail light



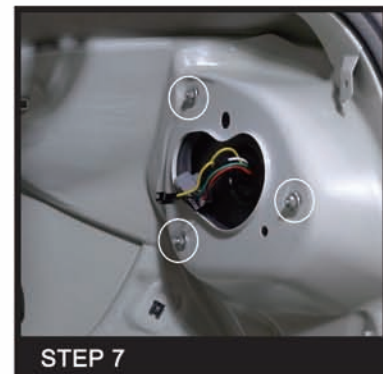
STEP 4
Disconnect the tail light harness and remove the three 8mm tail light mounting nuts



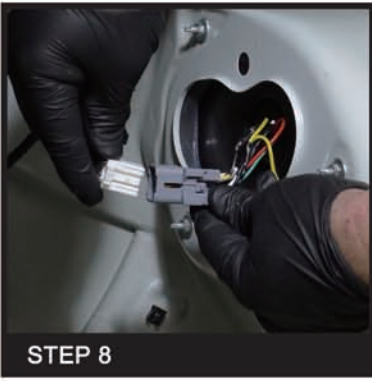
STEP 5
Remove the factory tail light housing



STEP 6
Seat the new tail light assembly in place



STEP 7
Reinstall the three 8mm tail light mounting nuts



STEP 8

Connect the tail light harness



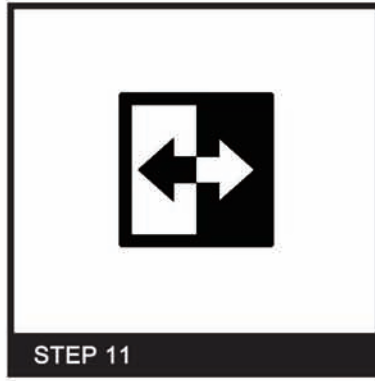
STEP 9

Connect the tail light resistor and set the resistor on the metal area



STEP 10

Reinstall the trunk side liner cover and the three plastic clips



STEP 11

Please repeat the steps from 3 to 10 for the opposite side



STEP 12

Close the trunk to complete installation



Installation & CARE

2015-2019 SUBARU WRX SWITCHBACK SEQUENTIAL LED TAIL LIGHTS INSTALLATION INSTRUCTIONS

BEFORE INSTALLATION:

- If you experience any difficulties that the instructions did not cover, please seek assistance at a local automotive shop.
- Please wear proper protective equipment before you work on any vehicle.
- An assistant is recommended when removing the front bumper from your vehicle.
- Please be cautious when working with the bumper or any parts belonging to the vehicle's body to prevent scratching.
- Do not make direct contact with the halogen bulbs or the wire assembly until the unit has cooled down after use.

2015-2019 SUBARU WRX SWITCHBACK SEQUENTIAL LED TAIL LIGHTS INSTALLATION INSTRUCTIONS

