



INSTALLATION GUIDE

High-Mount Intercooler Fits 2021+ Ford Bronco 2.7L

SKU: MMINT-BR27-21HK

TABLE OF CONTENTS

- Pg 1** RESOURCES AND CONTACT INFORMATION
- Pg 2** EXPLODED VIEW

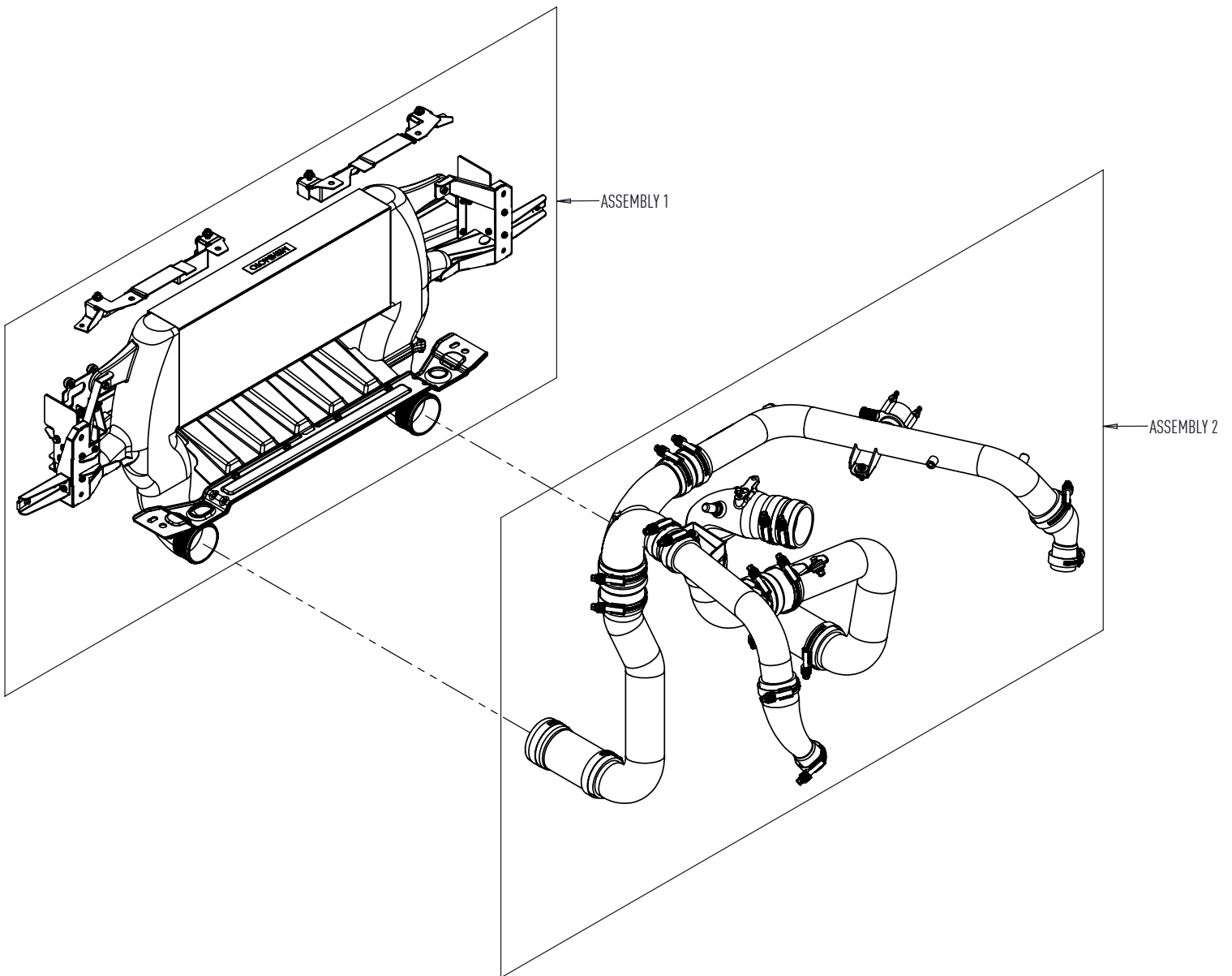
- Pg 5** IMPORTANT SAFETY INFORMATION
SUPPLIED PARTS
REQUIRED TOOLS
INSTALLATION INSTRUCTIONS

- Pg 24** DISPOSAL INSTRUCTIONS
WARRANTY INFORMATION

RESOURCES & CONTACT

-  **CALL 1-877-GOMISHI**
CUSTOMER SERVICE HOURS: MON-FRI 8:30AM-5:00PM EST
-  **MISHIMOTO**
-  **GOMISHIMOTO**
-  **MISHIMOTO**
-  **WEBSITE**
WWW.MISHIMOTO.COM
-  **ENGINEERING BLOG**
WWW.MISHIMOTO.COM/ENGINEERING

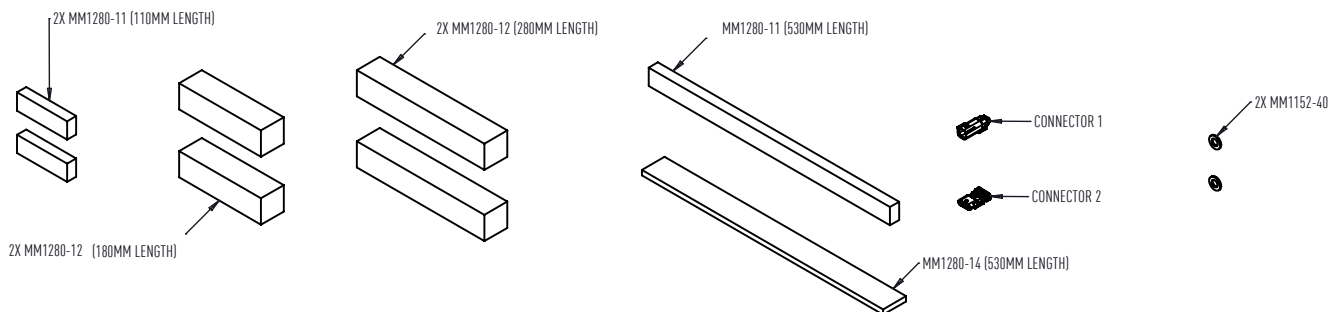
PARTS BREAKDOWN		
PART NUMBER	DESCRIPTION	QTY
Assembly 1	INTERCOOLER ASSEMBLY	1
Assembly 2	INTERCOOLER PIPING ASSEMBLY	1



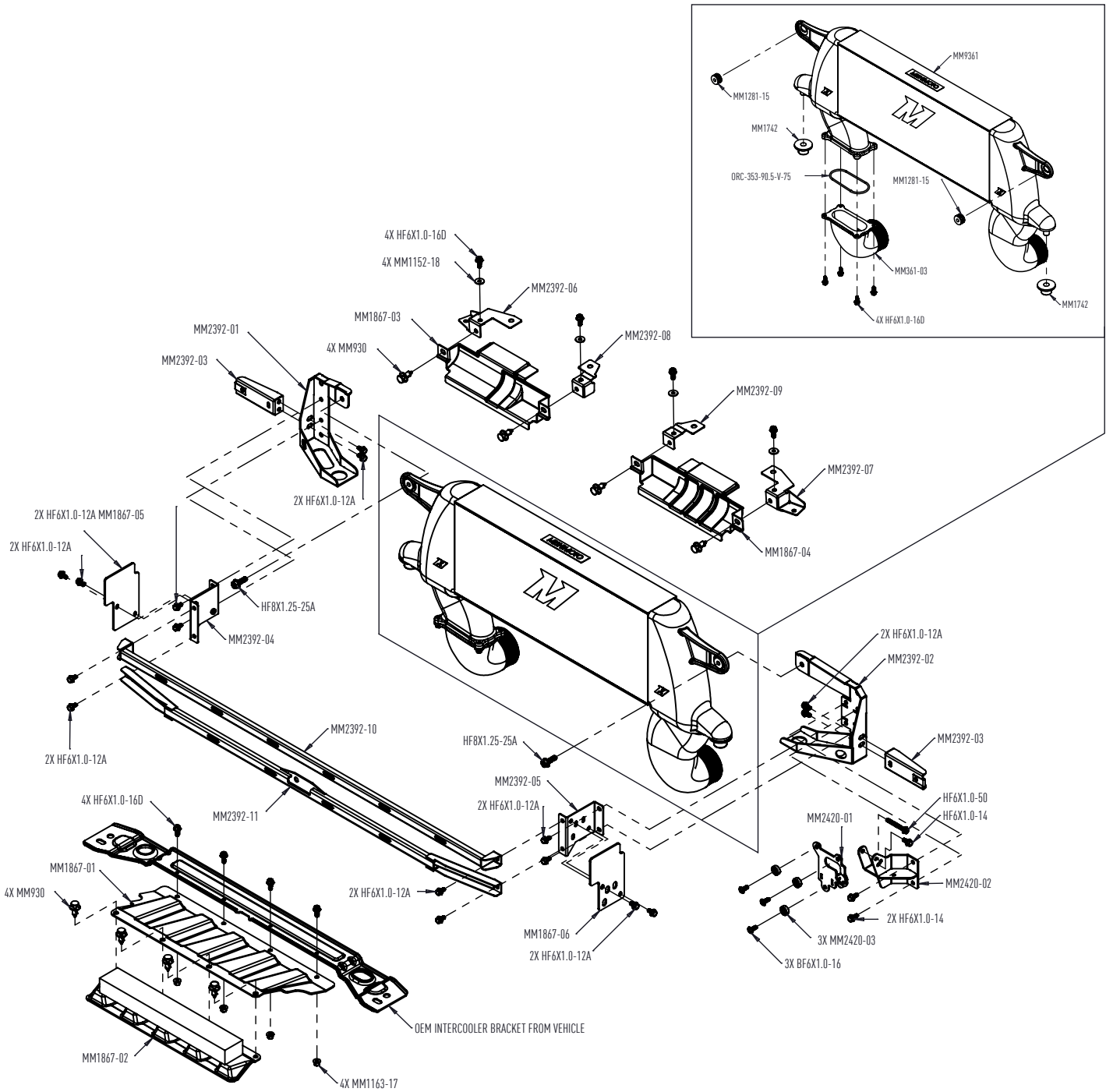
Continued on next page

PARTS BREAKDOWN – ASSEMBLY 1		
PART NUMBER	DESCRIPTION	QTY
MM9361	INTERCOOLER	1
MM361-03	INTERCOOLER INLET / OUTLET	1
ORC-353-90.5-V-75	O-RING	1
MM1867-01	DUCT 1	1
MM1867-02	DUCT 2	1
MM1867-03	DUCT 3	1
MM1867-04	DUCT 4	1
MM1867-05	DUCT 5	1
MM1867-06	DUCT 6	1
MM2392-01	BRACKET 1	1
MM2392-02	BRACKET 2	1
MM2392-03	BRACKET 3	2
MM2392-04	BRACKET 4	1
MM2392-05	BRACKET 5	1
MM2392-06	BRACKET 6	1
MM2392-07	BRACKET 7	1
MM2392-08	BRACKET 8	1
MM2392-09	BRACKET 9	1
MM2392-10	BRACKET 10	1
MM2392-11	BRACKET 11	1
MM2420-01	ACC BRACKET 1	1

PARTS BREAKDOWN – ASSEMBLY 1 CONT.		
PART NUMBER	DESCRIPTION	QTY
MM2420-02	ACC BRACKET 2	1
MM2420-03	ACC SPACER	3
MM1742	BUSHING	2
MM1281-15	GROMMET	2
HF6X1.0-12A	M6 BOLT, 12MM LENGTH	16
HF6X1.0-14	M6 BOLT, 14MM LENGTH	3
HF6X1.0-16D	M6 BOLT, 16MM LENGTH	12
HF6X1.0-50	M6 BOLT, 50MM LENGTH	1
HF8X1.25-25A	M8 BOLT, 25MM LENGTH	2
BF6X1.0-16	M6 BUTTON FLANGE BOLT, 16MM LENGTH	3
MM1163-17	LOCKING NUT	4
MM1152-18	WASHER	4
MM1152-40	WASHER	2
MM930	POP CLIP	8
MM1280-11	FOAM, 110MM LENGTH	2
MM1280-11	FOAM, 530MM LENGTH	1
MM1280-12	FOAM, 180MM LENGTH	2
MM1280-12	FOAM, 280MM LENGTH	2
MM1280-14	FOAM, 530MM LENGTH	1
CONNECTOR 1	RADIATOR GRILLE SHUTTER CONNECTOR	1
CONNECTOR 2	INTERCOOLER GRILLE SHUTTER CONNECTOR	1



Continued on next page



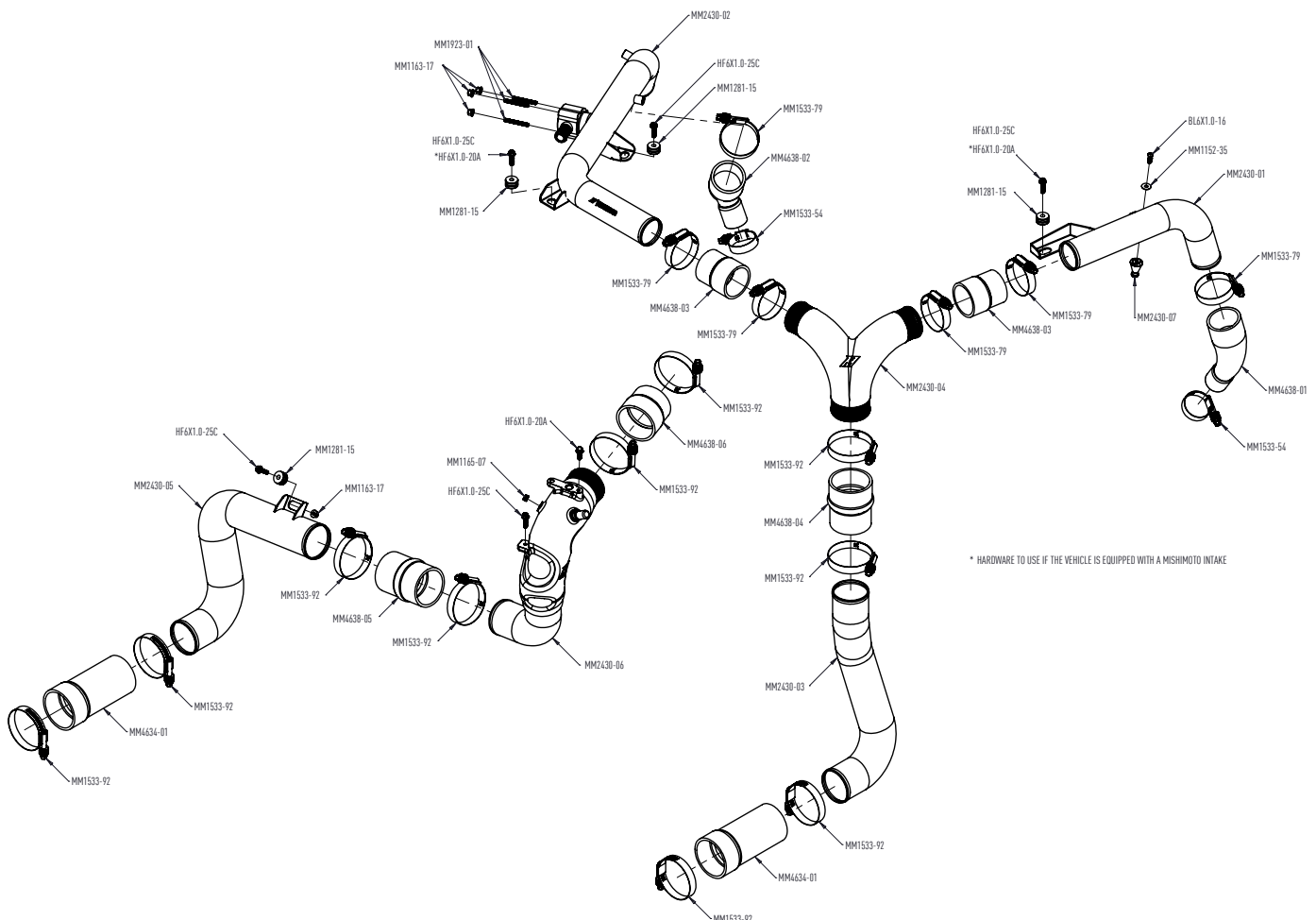
Continued on next page

PARTS BREAKDOWN – ASSEMBLY 2

PART NUMBER	DESCRIPTION	QTY
MM2430-01	HOT-SIDE PIPE 1	1
MM2430-02	HOT-SIDE PIPE 2	1
MM2430-03	HOT-SIDE PIPE 3	1
MM2430-04	HOT-SIDE PIPE 4	1
MM2430-05	COLD-SIDE PIPE 1	1
MM2430-06	COLD-SIDE PIPE 2	1
MM2430-07	MOUNTING PEG	1
MM1281-15	GROMMET	4
BL6X1.0-16	BOLT 1	1
HF6X1.0-20A	BOLT 2	3
HF6X1.0-25C	BOLT 3	5
MM1923-01	GRUB SCREW	3

PARTS BREAKDOWN – ASSEMBLY 2 CONT.

PART NUMBER	DESCRIPTION	QTY
MM1163-17	LOCKING NUT	4
MM1152-35	WASHER	1
M1164-03	ZIP TIE	4
MM4638-01	BOOT 1	1
MM4638-02	BOOT 2	1
MM4638-03	BOOT 3	2
MM4638-04	BOOT 4	1
MM4638-05	BOOT 5	1
MM4638-06	BOOT 6	1
MM4634-01	BOOT 7	2
MM1533-54	HD WG CLAMP	2
MM1533-79	HD WG CLAMP	6
MM1533-92	HD WG CLAMP	10



IMPORTANT SAFETY INFORMATION

- › Mishimoto recommends you use safety glasses and protective gloves during the installation of our products
- › Raise vehicle only on jack stands or on a vehicle lift
- › Allow vehicle to cool completely prior to attempting installation
- › Do not run the engine or drive the vehicle while overheating; serious damage can occur
- › Please dispose of any liquids properly
- › Mishimoto is not responsible for any vehicle damage or personal injury due to installation errors, misuse, or removal of Mishimoto products
- › If you need any assistance while installing our products, reach out to our Customer Service Team at 1-877-GOMISHI

REQUIRED TOOLS

1/4" RATCHET AND EXTENSION	PLIERS
3/8" RATCHET AND EXTENSION	HEAT GUN
1/4" TORQUE WRENCH	TAPE MEASURE / DIGITAL CALIPER
4MM SOCKET OR E5 TORX	CALIPER
7MM SOCKET	MARKER
8MM SOCKET	PAINTERS/MASKING TAPE
10MM SOCKET	CENTER PUNCH
12MM SOCKET	ADHESIVE REMOVER CHEMICAL (GOO-GONE)
15MM SOCKET	DRILL
10MM WRENCH	1/8" DRILL BIT
15MM WRENCH	1/4" DRILL BIT
T30 TORX	3/8" DRILL BIT
3MM ALLEN WRENCH	1/2" DRILL BIT
4MM ALLEN WRENCH	SANDPAPER
PANEL TOOL	COMBINATION SQUARE WITH
PICK TOOL	BUBBLE LEVEL
FLAT HEAD SCREWDRIVER	

INSTALL TIME: 8 HOURS

INSTALL DIFFICULTY: 

INSTALLATION INSTRUCTIONS

1. Measure and record the gap between the fender and the corner marker, do so at both the top and bottom corners of the marker. Do this on both sides. (Painters/masking tape, marker, tape measure or digital caliper)

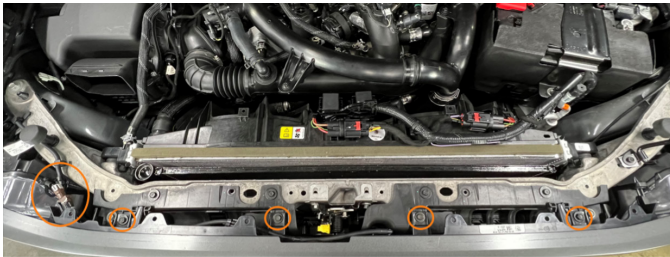


2. Remove the air duct and radiator cover. (9x pop-clips)

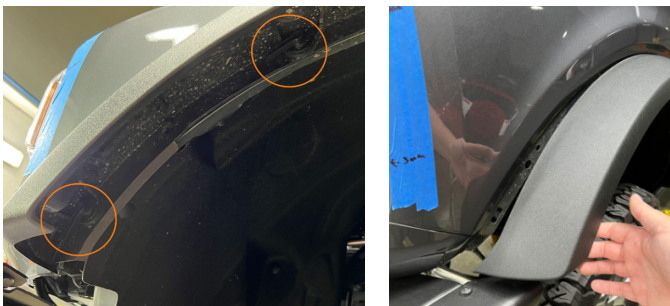


Continued on next page

3. Remove the bolts securing the grille to the grille support structure. If equipped, disconnect the electrical harness for the front camera and the fitting for the camera washer. Once the bolts are removed, carefully pull on both sides of the grille to unseat the grille from the grille support structure, then remove the grille from the vehicle. (4x 10mm bolts)



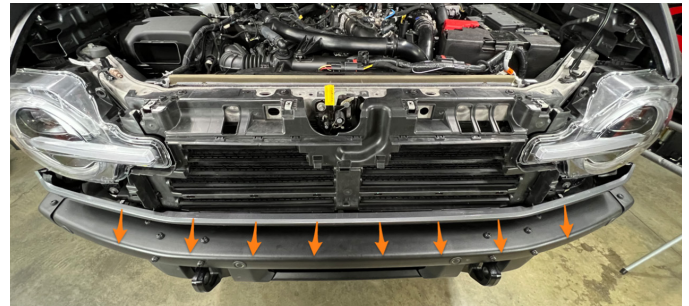
4. Locate the front two rotating fasteners securing the fender flares in place and turn them 90 degrees, then pull outward to partially remove them. **Do this on both sides.**



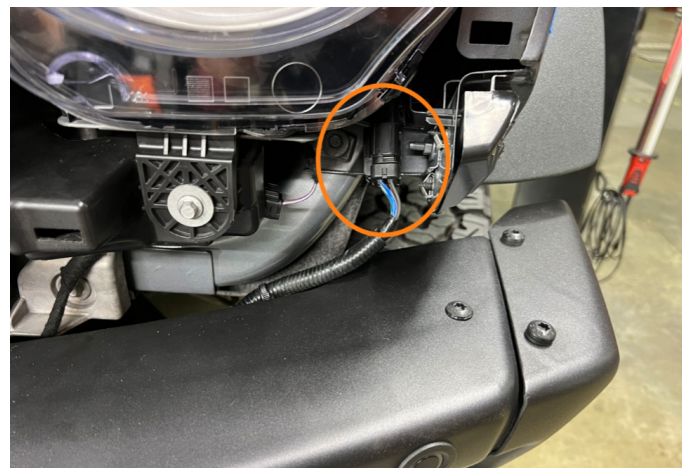
5. Pull outward on the rear corners of the front fascia to unseat it from the clips that secure it to the fenders. **Do this on both sides.**



6. Unseat the front fascia from the clips that secure it to the grille support structure. Once fully unseated, remove the front fascia from the vehicle.



7. Disconnect the electrical harness connector that is located below the driver side headlight. (1x harness connector)



8. Remove the pop-clips from the plastic trim panels located on the front bumper (Modular bumper only). Once the pop-clips are removed, pull outward to remove the plastic trim panels from the bumper. (8x pop-clips)

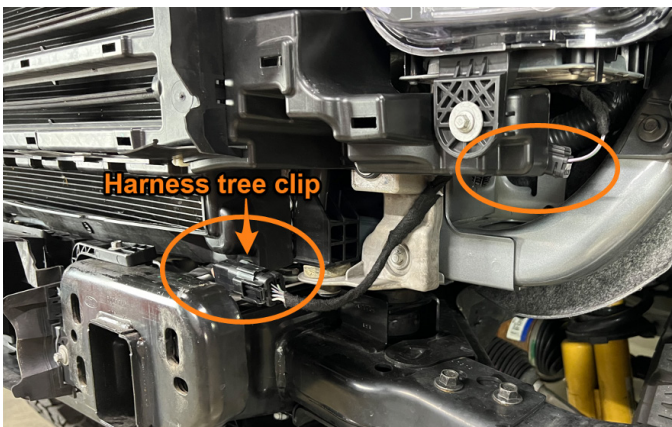


Continued on next page

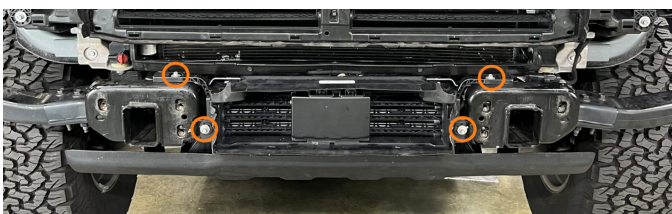
9. Remove the bolts securing the bumper in place, then remove the bumper from the vehicle. ***Removing the modular bumper may require a second person as it is heavy.** (6x 15mm bolts)



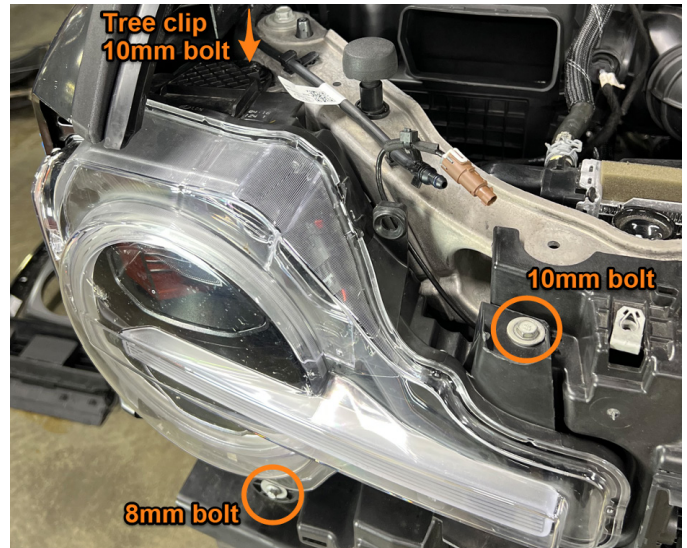
10. Disconnect the electrical harness connectors for both the intercooler and radiator active grille shutters. Unseat the intercooler active grille shutter harness tree clip. (2x harness connectors)



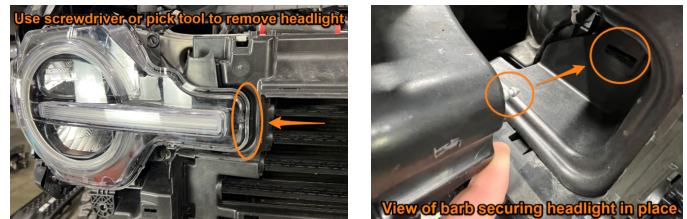
11. Remove the intercooler active grille shutter assembly from the vehicle. (4x 8mm bolts)



12. Remove the fasteners securing the passenger-side headlight in place. (1x tree clip, 2x 10mm bolts, 1x 8mm bolt)

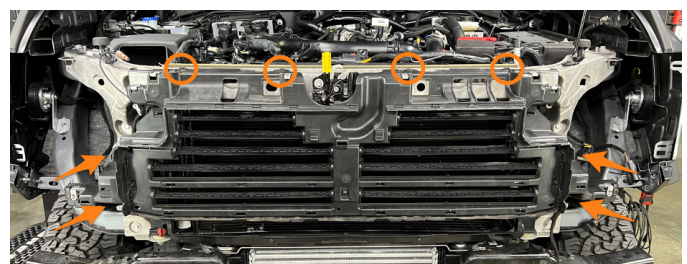


13. Using a screwdriver or pick tool, release the barb securing the headlight to the radiator active grille shutter assembly. Once removed, disconnect the electrical harness connector.

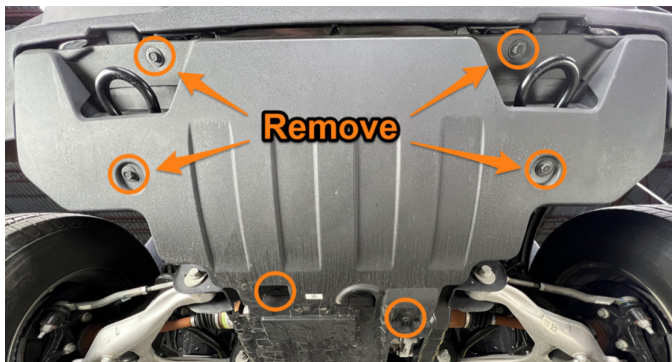


14. Repeat steps 12 and 13 to remove the driver-side headlight.

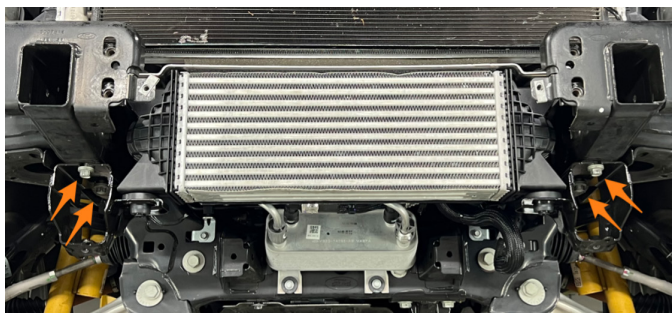
15. Remove the fasteners securing the radiator active grille shutter assembly to the radiator support. Once the fasteners are removed, lift upward and outward to unseat and remove the radiator active grille shutter assembly from the vehicle. (8x 10mm bolts)



16. Loosen the bolts securing the front skid plate in place then remove only the bolts nearest to the bumper (**remove 2x bolts if equipped with modular bumper, 4x bolts if equipped with plastic bumper**). Once the bolts are removed, remove the front skid plate from the vehicle. (15mm bolts)



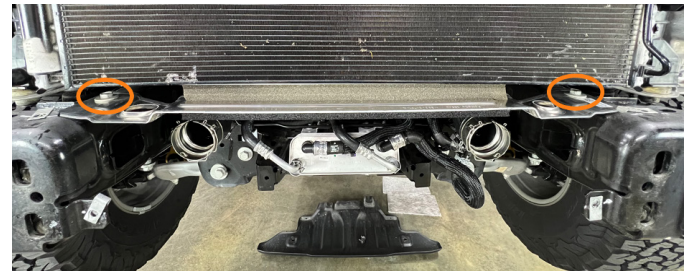
17. Remove the lower intercooler brackets. (4x 15mm bolts)



18. Disconnect the intercooler inlet and outlet, then remove the intercooler from the vehicle.



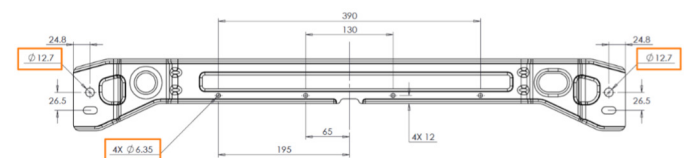
19. Remove the upper intercooler bracket from the vehicle. (2x 15mm bolts)



20. Remove the large adhesive backed foam strip from the upper intercooler bracket using a heat gun. Once removed, clean off any residual adhesive from the bracket.



21. Mark the locations where holes need to be drilled in the upper intercooler bracket using the above drawing. Once marked, center punch each hole location. Drill a pilot hole at each hole location using a 1/8" drill bit. Use a 1/4" (6.35mm) drill bit to open up all the pilot holes to 1/4". Using a 1/2" (12.7mm) drill bit, open up the two outer most mounting holes to 1/2".



Continued on next page

22. Remove any burrs created during the drilling process with sand paper.



23. Fasten the MM1867-01 duct to the upper intercooler bracket using the provided hardware. (4x HF6x1.0-16D and 4x MM1163-07)



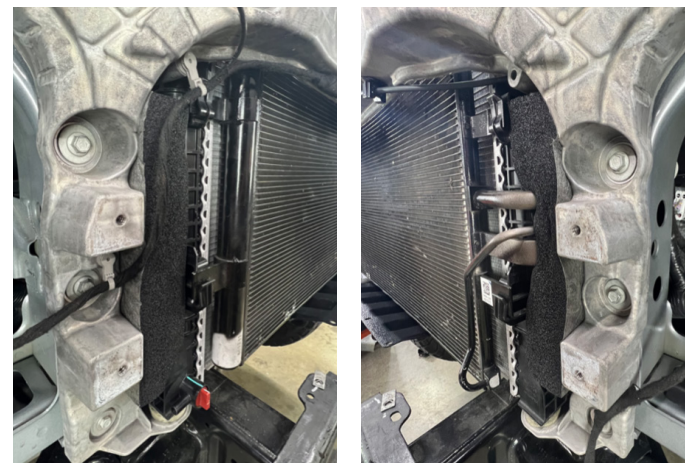
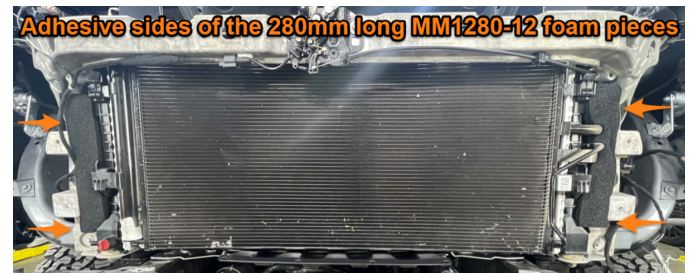
24. Apply the 530mm long pieces of MM1280-11 and MM1280-04 adhesive backed foam to the upper intercooler bracket and ducting assembly.



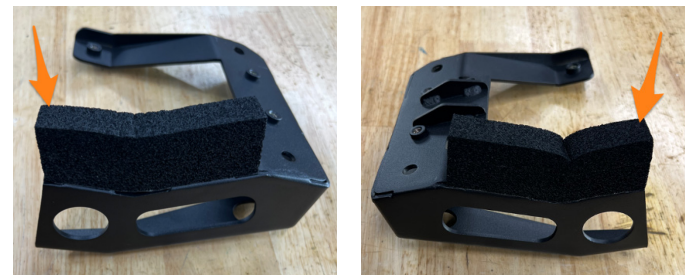
25. Slide the upper intercooler bracket, ducting, and foam assembly back into the vehicle between the frame and the radiator until the ducting is touching, or close to touching, the A/C condenser. This bracket assembly will be fully installed in a later step.



26. Apply the two 280mm long pieces of MM1280-12 adhesive backed foam to the radiator support, between the radiator and radiator support.



27. Apply the two 110mm long pieces of MM1280-11 adhesive backed foam to the back sides of MM2392-01 and MM2392-02 in the locations shown. (2x 110mm long MM1280-11)



28. Loosely install MM2392-01 and MM2392-02 with one bolt only. (Image on next page)

Continued on next page



29. Remove the 4x 10mm bolts securing the lower section of the passenger-side intercooler end tank in place, then remove the lower section of the end tank from the intercooler.



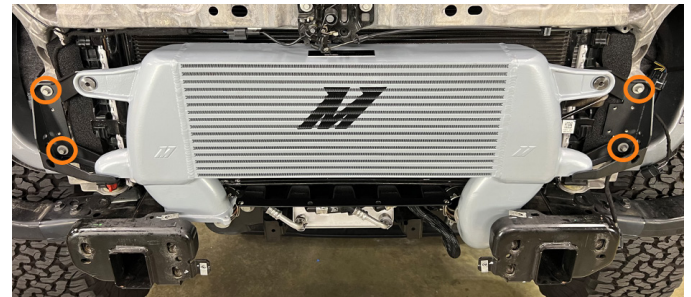
30. Install the provided grommets and bushings on to the intercooler. [2x MM1281-15 and 2x MM1742]



31. Maneuver the driver-side of the intercooler between the frame and ducting, then lower the passenger-side of the intercooler down between the frame and A/C condenser. Once the intercooler is in its approximate location, rotate the brackets into position and lower the intercooler into the brackets. **(Image on top right)**



32. Install the remaining bolts to secure the intercooler brackets to the vehicle, then tighten them. [2x 10mm bolts]

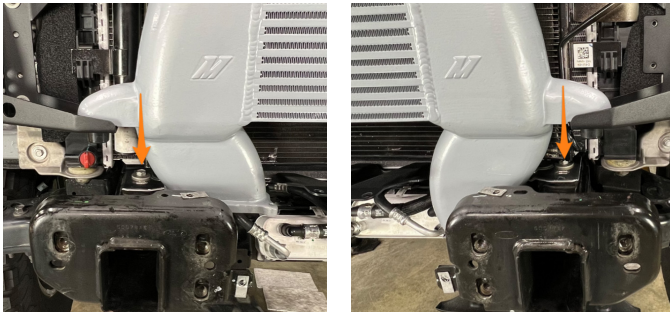


33. Secure the intercooler to the brackets using the provided 12mm bolts. [2x HF8X1.25-25A]

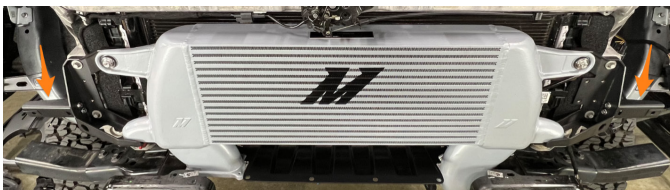


34. Pull outward on the upper intercooler mounting bracket, ducting, and foam assembly until the 1/2" mounting holes align with the threaded holes in the frame. Once aligned, use the original fasteners to secure it in place. [2x 15mm bolts] **(Image on next page)**

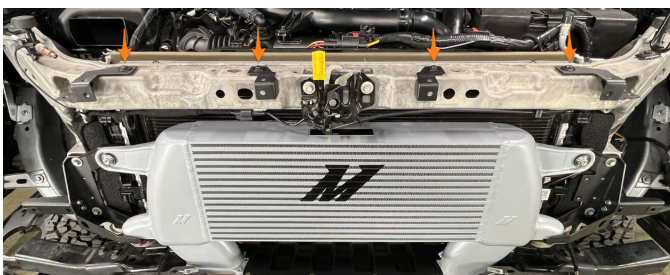
Continued on next page



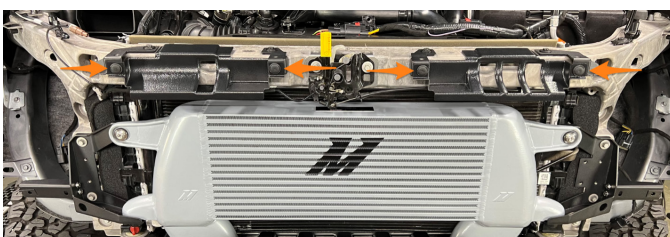
35. Install 2x MM2392-03 using the provided 12mm length bolts. **Do not fully tighten the bolts** as the brackets' final position will be adjusted in a later step. (4x HF6X1.0-12A)



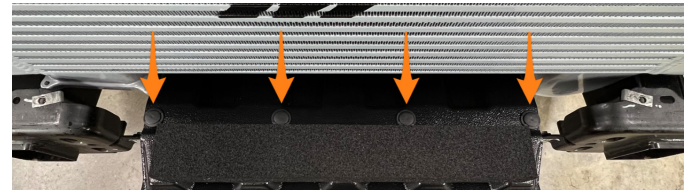
36. Install MM2392-06, -07, -08, and -09 using the original fasteners that were used to secure the radiator grille shutter assembly in place. (4x 10mm bolts)



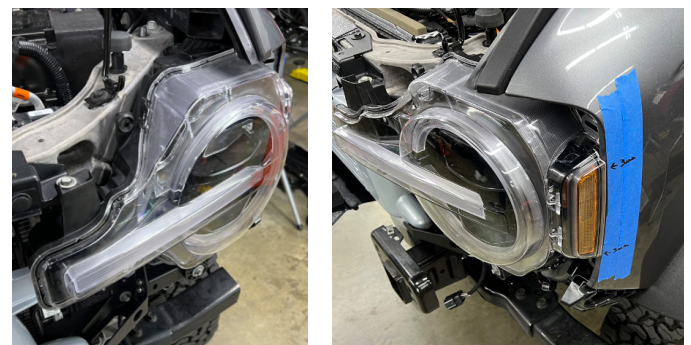
37. Install MM1867-03 and -04 to the brackets previously installed in step 50 using the provided pop clips. (4x MM930)



38. If your vehicle is equipped with the modular bumper, fasten MM1867-02 to the upper intercooler bracket, ducting, and foam assembly using the provided pop clips. (4x MM930). **Proceed to step 53 if your vehicle is not equipped with the modular bumper.**



39. Install the headlights. Adjust the positioning of the headlights until the gap measured in step 1 is achieved then tighten all the fasteners, including the fasteners securing the MM2392-03 brackets in place. After tightening, check the measurement again to confirm it has not changed. Once confirmed, remove the headlights from the vehicle.



40. Carefully remove the wiring harness from the intercooler grille shutter assembly.

41. Push the provided cavity plugs into the open cavities located on the back side of the provided intercooler grille shutter motor connector.



Continued on next page

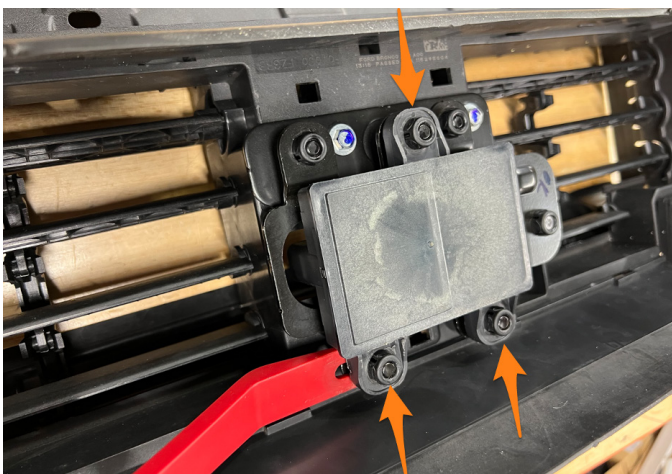
42. Connect the provided intercooler grille shutter motor connector to the corresponding connector on the intercooler grille shutter wire harness. **If your vehicle is not equipped with Active Cruise Control, please proceed to step 66.**



43. Pull outward on the cover located on the front of the intercooler grille shutter assembly to remove it.



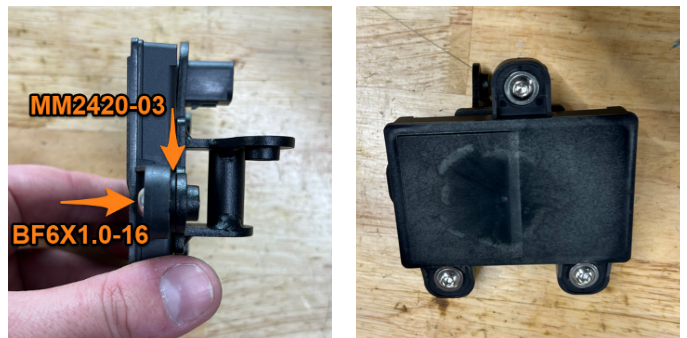
44. Using a panel tool, carefully pry upward on the bottom of the 3x active cruise control sensor brackets to remove it from the intercooler grille shutter assembly. **You MUST be very careful not to drop this sensor as it can be damaged very easily.**



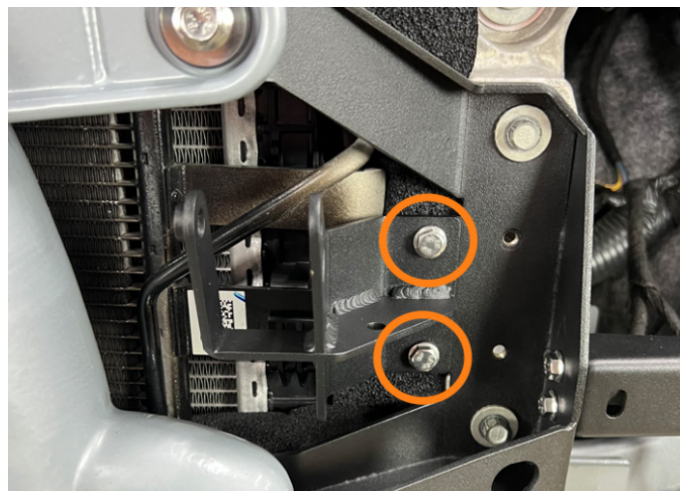
45. Remove the 3x plastic bushings from the sensor by pushing the tabs inward while applying some downward pressure, then push the bushings out of the sensor brackets.



46. Fasten the adaptive cruise control sensor to the MM2420-01 bracket using the provided hardware and spacers. (3x BF6X1.0-16 and 3x MM2420-03 spacers)

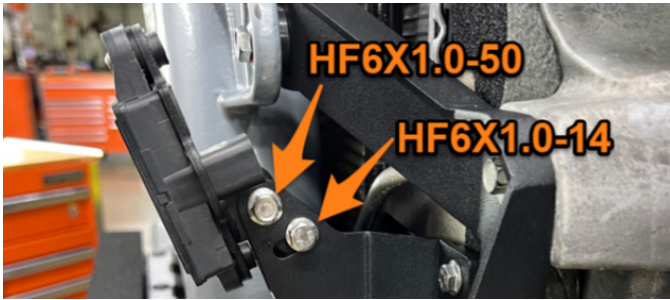


47. Install the MM2420-02 bracket to the driver-side intercooler mounting bracket using the provided hardware. (2x HF6X1.0-14)

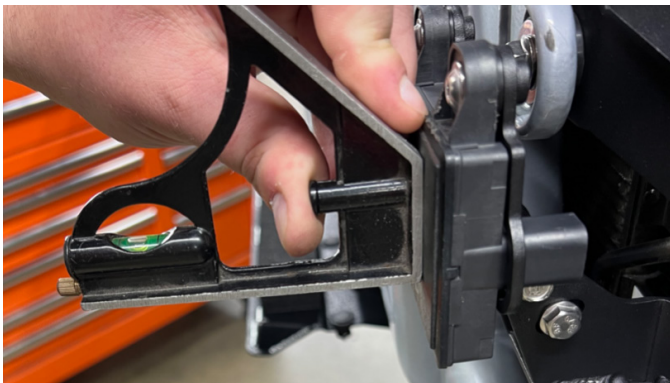


Continued on next page

48. Fasten the MM2420-01 bracket and sensor assembly to the MM2420-02 bracket using the provided hardware. (1x HF6X1.0-14 and 1x HF6X1.0-50)



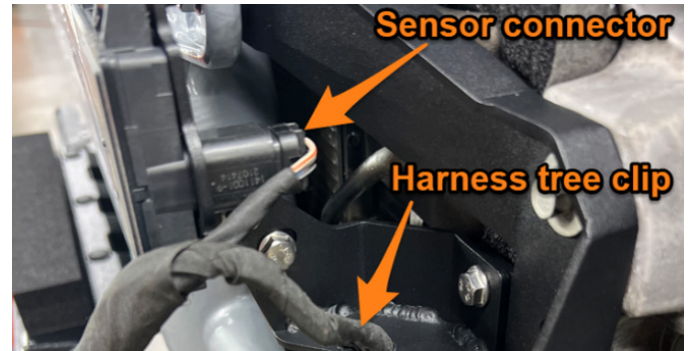
49. Using a square with a bubble level, adjust the sensor pivot angle until it is level. Once the sensor is level, tighten the bolts.



50. Using a square with a bubble level, adjust the MM2420-02 bracket until level. Once level, tighten the bolts.



51. Connect the intercooler grille shutter harness to the adaptive cruise control sensor, then attach the harness tree clip to the open hole on the MM2420-02 bracket.



52. Secure the intercooler grille shutter harness to the MM2392-05 bracket using the harness tree clips. Route the harness as shown below.

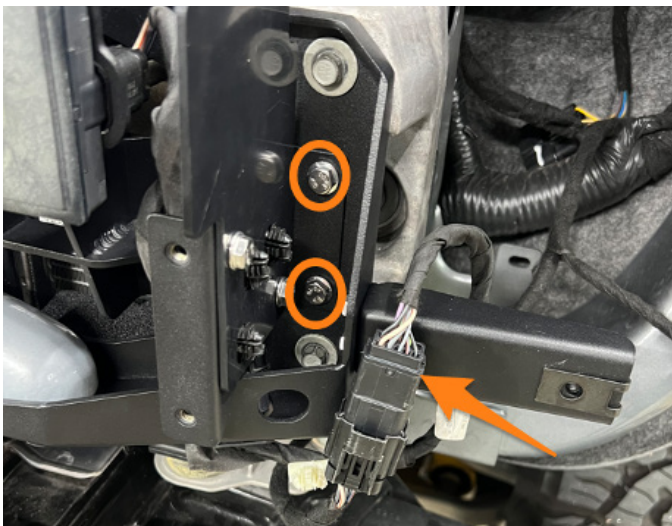


53. Attach the MM1867-06 duct panel to the MM2392-05 bracket using the provided hardware. (2x HF6X1.0-12A) **(Image on next page)**

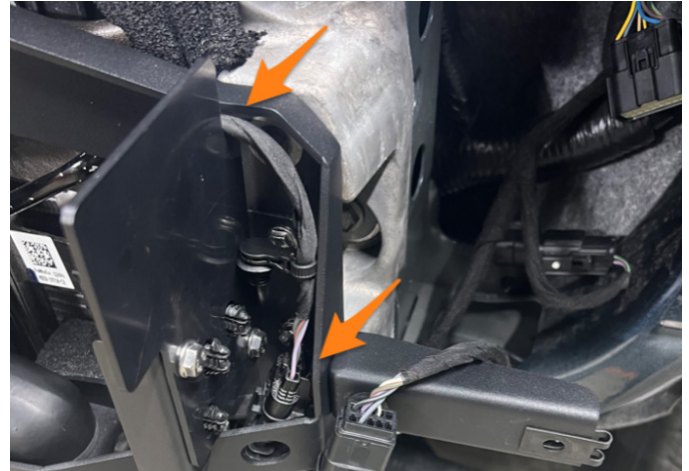
Continued on next page



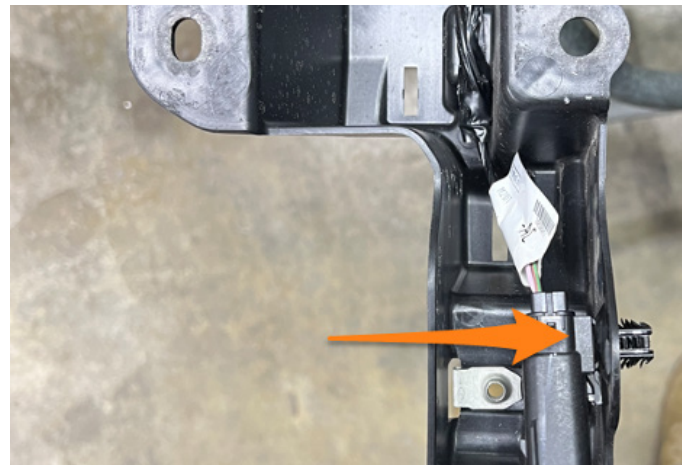
54. Install the MM2392-05 bracket to the driver-side intercooler bracket using the provided hardware. Reconnect the intercooler grille shutter harness to the vehicle body harness and attach the connector tree clip to the MM2392-03 bracket as shown in the above image. [2x HF6X1.0-12A] **If your vehicle is equipped with Active Cruise Control, skip step 69.**



55. Route the remaining harness section with the provided intercooler grille shutter motor connector over top of the MM1867-06 duct panel and let the connector rest in the bottom of the intercooler bracket.



56. Unseat the connector from the driver-side of the radiator grille shutter assembly.



57. Remove the connector tree clip from the connector using a panel tool or flat head screwdriver.

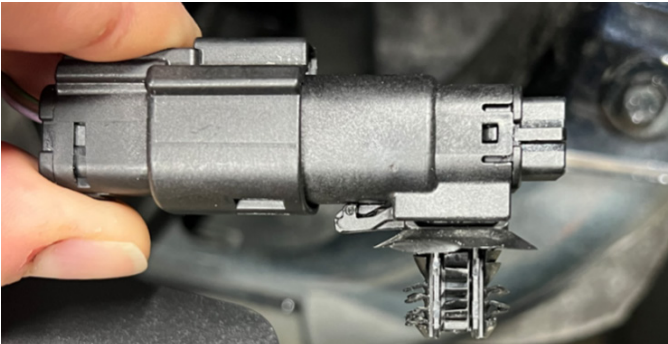


Continued on next page

58. Install the connector tree clip onto the provided radiator grille shutter motor connector.



59. Connect the provided radiator grille shutter motor connector to the vehicle body harness.



60. Secure the radiator grille shutter motor connector to the body of the vehicle in the location shown above.



61. Fasten the MM1867-05 duct panel to the MM2392-04 bracket using the provided hardware. (2x HF6X1.0-12A) **(Image on top right)**



62. Install the MM2392-04 bracket to the passenger-side intercooler bracket using the provided hardware. (2x HF6X1.0-12A)

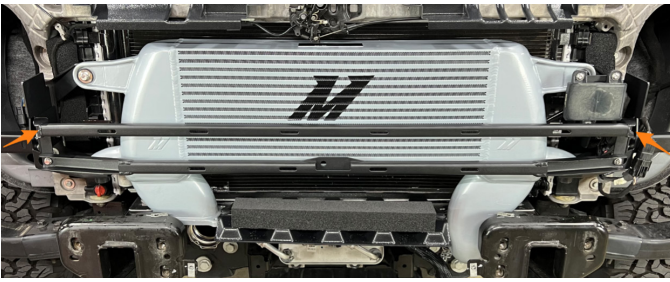


63. Install the MM2392-11 bracket to the MM2392-04 and -05 brackets using the provided hardware. Align the bottom of the brackets, then tighten the bolts. (2x HF6X1.0-12A)

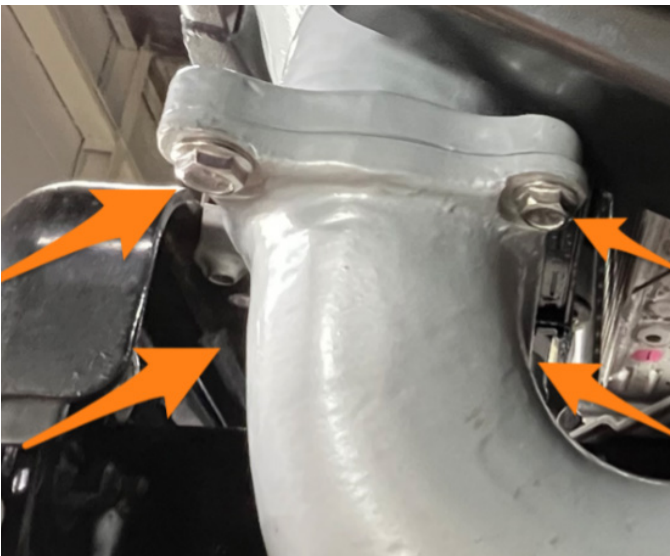


Continued on next page

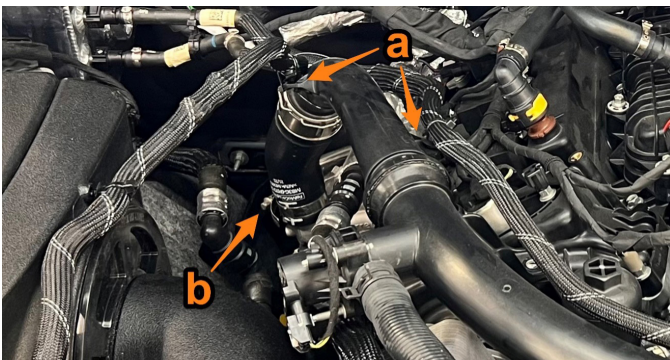
64. Install the MM2392-10 bracket to the MM2392-04 and -05 brackets using the provided hardware. Align the top of the brackets, then tighten the bolts. **[2x HF6X1.0-12A]**



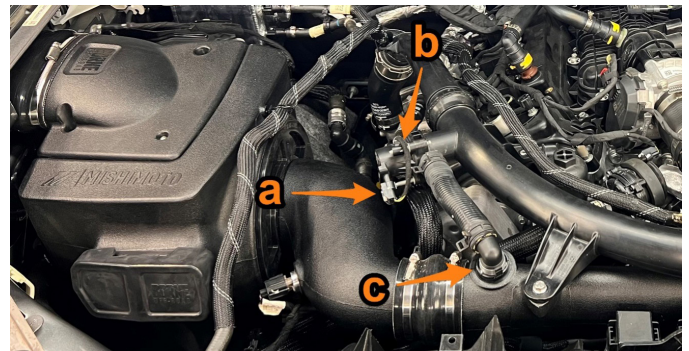
65. Clean off any debris that may have made its way into the o-ring then reinstall the lower section of the passenger-side end tank. Torque the bolts to 10 Nm **[88.5 in-lbs]**.



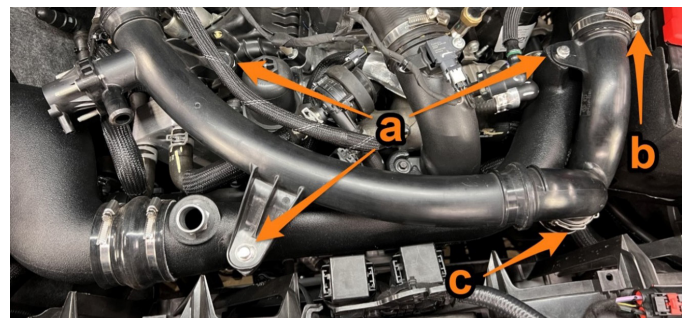
66. Using a trim clip tool, remove the two hose routing tree clips (a). Using a 7mm socket, loosen hose clamp (b)



67. Unplug the recirculation valve connector (a) and remove the two wire clips (b). Disconnect the recirculation hose quick disconnect fitting from the air intake (c). Using an E5 Torx or 4mm socket, remove the 3 stud bolts and remove the valve from the stock intercooler pipe.



68. Release the quick disconnect clip (c) and remove the lower hot-side intercooler pipe from the bottom of the vehicle. Using an 8mm socket, remove the three bolts securing the hot-side intercooler pipe to the air intake (a). Using a 7mm socket, loosen the hose clamp (b), then lift the passenger-side hot-side intercooler piping assembly out of the vehicle.

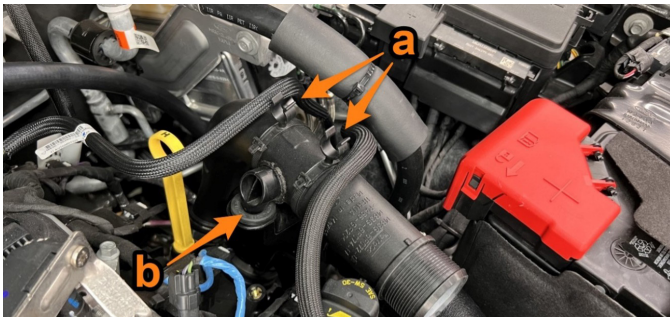


69. Through the driver-side wheel well, use a 7mm socket to loosen the hose clamp.

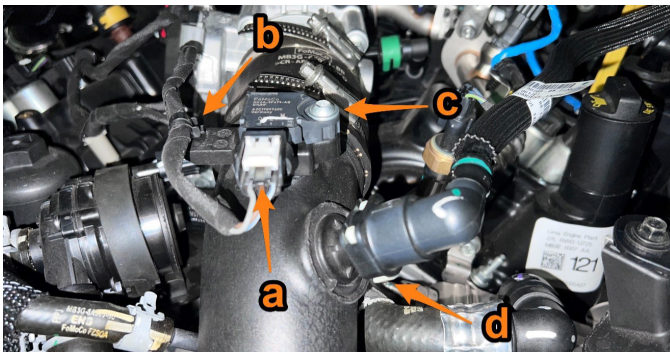


Continued on next page

70. Remove the vacuum hoses from the two clips (a). Lift up and rotate the driver-side intercooler pipe back and forth to free it from the rubber mount (b). Remove the pipe from the vehicle.



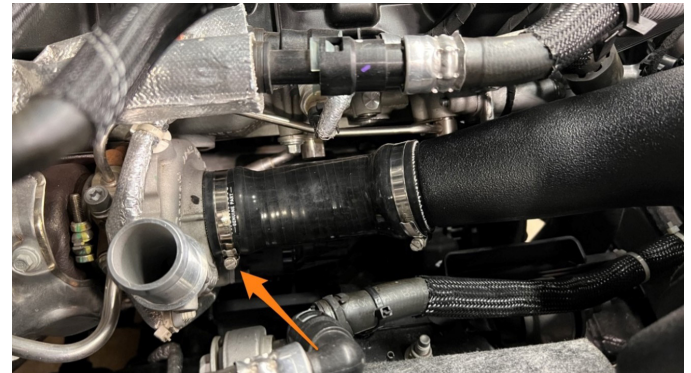
71. Unplug connector (a) and use a trim clip tool to remove tree clip (b). Using a T25 Torx, remove screw (c) and remove the sensor from the upper cold-side intercooler pipe.



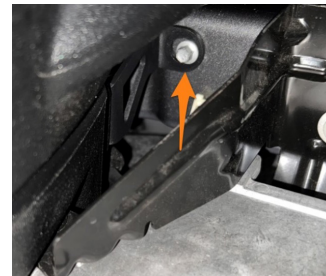
72. Using a 7mm socket, loosen hose clamps (a) and (b). Using an 8mm socket, remove bolt (c). Remove the intake pipe.



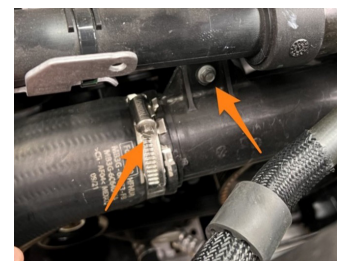
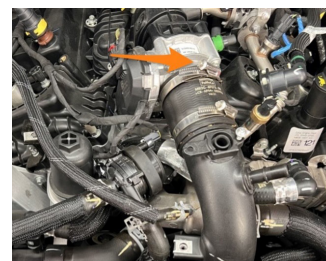
73. Using a 7mm socket, loosen the clamp on the passenger-side turbo. **(Image on top right)**



74. Using an 8mm socket, remove the bolt securing the airbox in place **(left image below)**. Remove the intake air temperature sensor **(right image below)** from the intake pipe by rotating it about ¼ turn counterclockwise and pulling out. Remove the airbox from the vehicle.

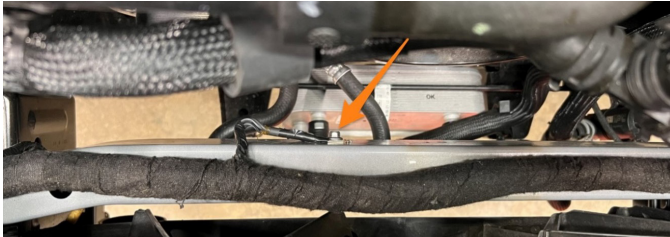


75. Using a 7mm socket, loosen the hose clamp on the throttle body **(left image below)**. Using an 8mm socket on the bolt and 10mm wrench from behind the bracket to hold the nut in place, remove the bolt **(right image below)**. Use a 7mm socket to loosen the hose clamp **(right image below)**. Remove the upper and lower cold-side intercooler pipe sections.



Continued on next page

76. Using an 8mm socket, remove the bolt holding the ground strap and tuck the strap on top of the cross member.



77. Rotate this transmission cooler line out of the way to give more room.



78. Using an 8mm socket, remove this bolt and tuck the hose/bracket out of the way.



79. Install a grommet onto cold-side pipe 1 as shown by first installing the rubber part then inserting the metal sleeve.



80. From the bottom of the vehicle, install cold-side pipe 1 on the passenger side and hot-side pipe 3 on the driver side. Reattach the ground strap from step 76.



81. Slide 2x 92mm clamps onto each pipe then install the 2 boots, MM4634-01, with the larger diameter toward the Mishimoto high-mount intercooler. The pipes should be inserted such that the edge of the boot is lined up with the first white line from the end of the pipe.

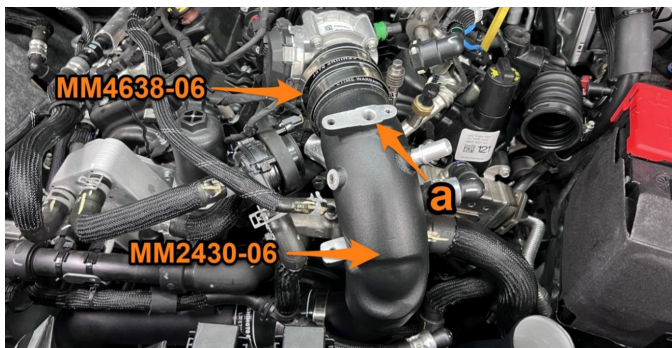


82. Using a 10mm socket and wrench, fasten the passenger-side intercooler pipe to the bracket with the provided 6mm bolt and nut. Install the longer straight section of boot 5 onto the pipe and slide 2x 92mm clamps over the boot.



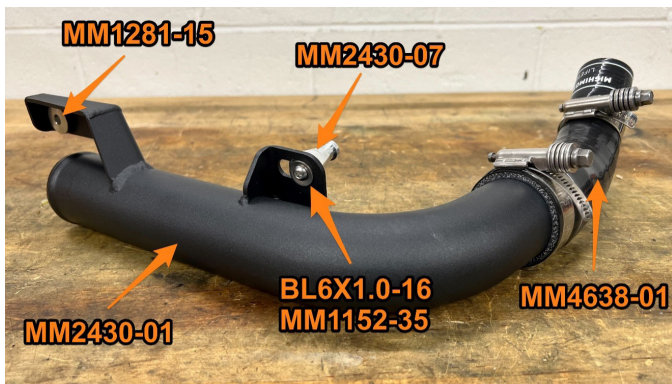
Continued on next page

83. Install boot 6 onto the throttle body and slide 2x 92mm clamps over the boot. Insert the bottom of cold-side pipe 2 into the boot from the previous step then rotate the top into the boot on the throttle body. After ensuring proper alignment, use a 10mm socket to tighten all the clamps on the cold-side pipes. Using a 10mm socket, install the stock sensor into port (a) using the provided 6mm bolt, HF6X1.0-20A.

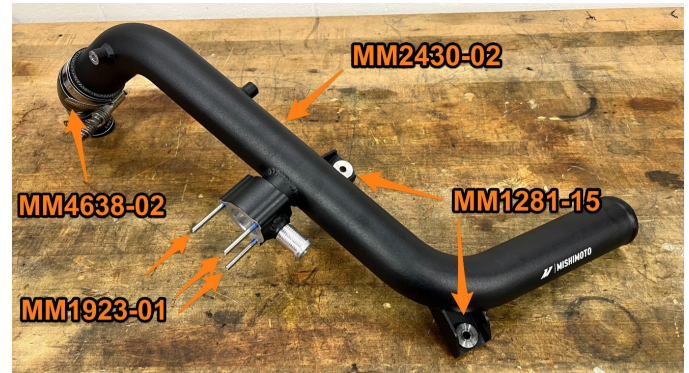


84. Reinstall the airbox and intake pipes.

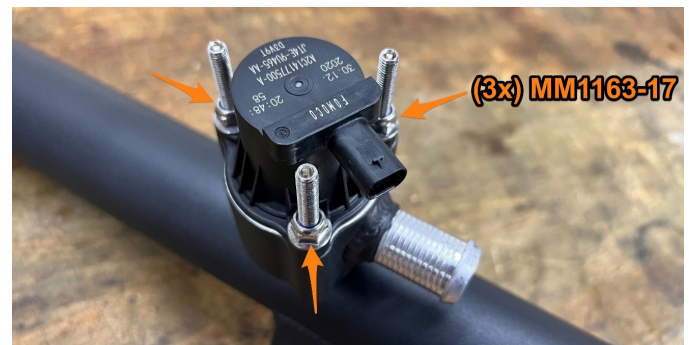
85. Install boot 1 onto hot-side pipe 1 then slide a 79mm clamp and 54mm clamp over the boot. Using a 4mm Allen wrench, loosely install the mounting peg with supplied M6 bolt and washer. Install the grommet.



86. Install boot 2 onto hot-side pipe 2 then slide a 79mm clamp and 54mm clamp over the boot. Using a 3mm Allen wrench, install the 3 grub screws into the housing until they bottom out. Install the two grommets into the brackets.



87. Using a 10mm socket, install the stock recirculation valve into the housing with the provided locking nuts.

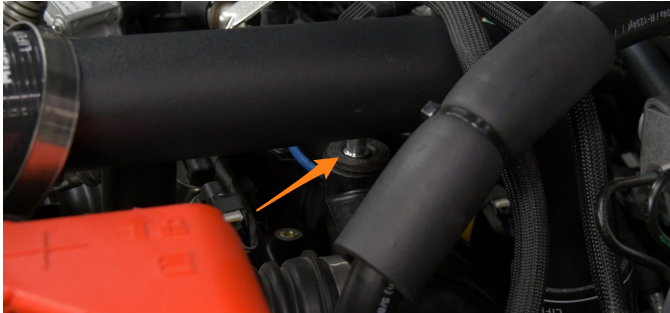


88. Install the larger diameter side of boot 3 onto both sides of hot-side pipe 4 then, slide 2x 79mm clamps onto each boot. Install the larger diameter side of boot 4 onto the bottom of the "Y" then slide 2x 92mm clamps onto the boot. Using a 10mm socket, loosely tighten the inner clamps.

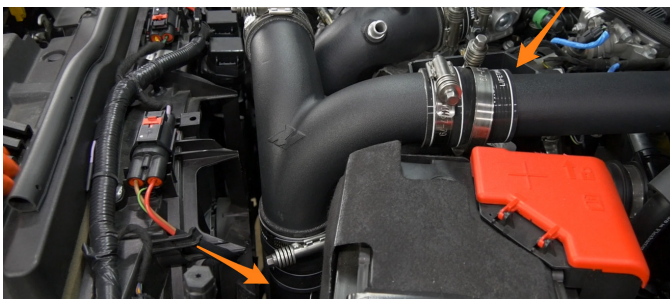


Continued on next page

89. Install the assembly from step 85 on the driver-side of the engine, being sure to get the peg into the rubber grommet on the intake pipe and the boot onto the turbo outlet. The peg can slide in its slot to accommodate proper alignment.



90. Install the lower boot of the assembly from step 88 onto the hot-side pipe coming from the intercooler, then slide the upper right boot onto the pipe from the previous step.



91. Install the assembly from steps 86/87 on the passenger-side of the engine, being sure to get the boot onto the turbo outlet and the other end of the pipe into the other side of the "Y" from the previous step.



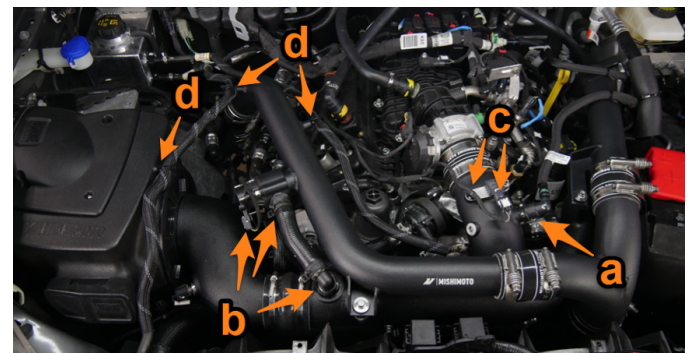
92. Adjust the pipes and boots until everything is aligned. The pipes are inserted far enough into the boots when the bead is roughly centered on the second white line from the edge of the boot. For cast/machined fittings, they should bottom out on the shoulder.

93. Using a 10mm socket, install the 3x provided HF6X1.0-25C bolts if using the stock intake. If using a Mishimoto intake, install the provided 1x HF6X1.0-25C and 2x HF6X1.0-20A bolts.

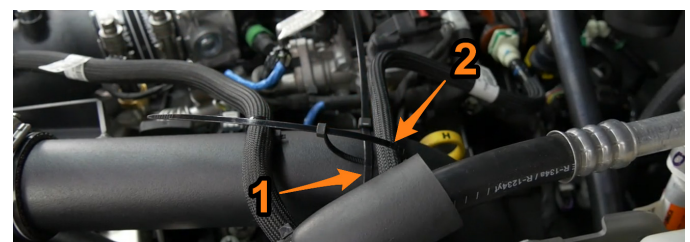


94. Using a 10mm socket, tighten all the hot-side pipe clamps. The clamp on the driver-side turbo outlet can be accessed through a hole in the fender liner.

95. Reconnect the CCV hose (a), recirculation pipe and clamp, and connector (b), pressure sensor connector and harness clip (c), and harness/hose tree clips (d).



96. Loop one zip tie around the Mishimoto intercooler pipe on the driver-side. Loop another zip tie through the first one and around the vacuum hose. Pull tight and trim the ends. Repeat this process for the other vacuum hose.

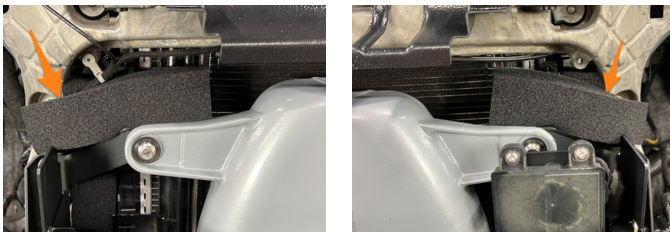


Continued on next page

97. Rotate the hose/line from step 77 back into place and reinstall the bracket and bolt from step 78.

98. Check to make sure the Mishimoto intercooler piping is not touching any of the pulleys on the front of the engine. Once proper clearance around the piping is confirmed, tighten all the clamps.

99. Apply the two 180mm long pieces of MM1280-12 adhesive backed foam to the areas shown in the above images. Adhere the foam to the radiator support and A/C condenser end tanks.

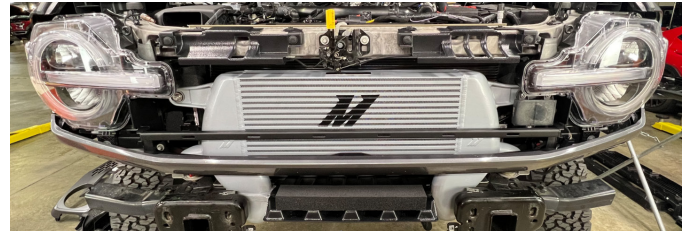


100. Reinstall the headlights.

101. Cut the alignment peg on the back side of the front fascia to approximately 3/4" length (20mm) using a pair of pliers.



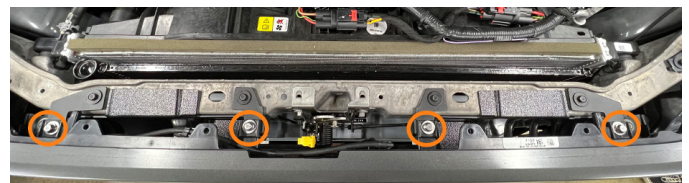
102. Reinstall the front fascia.



103. Reinstall the fender flares.



104. Reinstall the grille using the provided bolts and washers. If equipped, reconnect the front camera harness and camera washer fitting. (4x HF6X1.0-16D and 4x MM1152-18)



Continued on next page

105. Reinstall the radiator cover.



106. Reinstall the stock intercooler lower mounting brackets.



107. Reinstall the front skid plate.



108. Guide the front bumper back onto the vehicle, ensuring that the lower intercooler ducting slides into the upper area of the bumper.



109. Secure the front bumper in place with the original fasteners.

Use the provided larger washers under the upper two inboard fasteners. This increases the clearance between the back side of the fastener and the intercooler end tanks. [2x MM1152-40]



110. Reinstall the front bumper plastic trim panels.

Congratulations! You have completed your installation!

Continued on next page

DISPOSAL INSTRUCTIONS

- › Do not dispose of any product as unsorted municipal waste. Use separate collection facilities. Contact your local authority for information regarding the collection systems available.
- › Never improperly dispose of any coolant, oil, or other chemicals.

WARRANTY INFORMATION



- › All claims must be accompanied with a picture of the Mishimoto product showing the issue for which the claim is being submitted.
- › Mishimoto asks that the customer inspect their purchased item for any damage immediately upon arrival.
- › Any product deemed dead on arrival (DOA) must be claimed within 14 business days of delivery. Claims outside of this time frame will not be covered under the Mishimoto Lifetime Warranty.
- › This warranty does not include payment and/or reimbursement of the cost of labor in connection with the removal of any product returned pursuant to the warranty policy or in connection with the installation of any replacement items provided under the warranty policy.

- › Mishimoto has the right to refuse a claim at any time.
- › When Mishimoto accepts a claim, Mishimoto retains full discretion to choose if it will: (i) repair or replace purchaser's original Mishimoto product; (ii) replace purchaser's original Mishimoto product with the most current available model; or (iii) provide the purchaser with a gift card redeemable on [Mishimoto.com](https://www.mishimoto.com) in the amount of the original purchase price of the original Mishimoto product. The provision of a replacement of a Mishimoto product is subject to availability and Mishimoto retains the right to substitute any warranty claim item with a comparable item or credit at any time.
- › If Mishimoto determines that it will provide a replacement item in connection with a claim under this warranty policy, and such item is out of stock, Mishimoto will place the customer on backorder and ship the replacement product to the purchaser once it becomes available.
- › Mishimoto is not liable for incorrect shipments in connection with a claim if a claim form is completed incorrectly, or if a model number is not included in a claim.
- › If you have a vehicle equipped with an automatic transmission, please make sure to specify this within the text box on the claim form. Mishimoto is not responsible for incorrect replacement shipments if transmission type is not indicated.



WARNING
Cancer and
Reproductive Harm
www.P65Warnings.ca.gov

This product can expose you to chemicals which are known to the state of California to cause cancer. For more information visit: www.p65warnings.ca.gov