

2022+ Subaru WRX JB4 BETA Install Guide

Last updated 10/8/2022

Use subject to terms and conditions posted at <https://burgertuning.com/pages/terms>

THIS PART IS LEGAL FOR USE ONLY IN COMPETITION RACING VEHICLES AS DEFINED UNDER CALIFORNIA LAW AND IS NOT LEGAL FOR USE IN ANY OTHER MOTOR VEHICLE. California law defines a "racing vehicle" as "a competition vehicle not used on public highways." (Calif. Health & Safety Code 39048) This part may only be used on competition racing vehicles operated exclusively on a closed course in conjunction with a sanctioned racing event. Competition-only motor vehicles may not be driven to a racing event on a public highway and must be transported on a trailer or other carrier. USE OF THIS PART IN ANY OTHER VEHICLE MAY SUBJECT YOU TO FINES AND PENALTIES FOR VIOLATION OF FEDERAL AND/OR STATE LAW, WILL VOID YOUR WARRANTY FROM BURGER MOTORSPORTS, INC, AND CAN VOID YOUR VEHICLE'S WARRANTY. It is your responsibility to comply with all applicable federal and state laws relating to the use of this part, and Burger Motorsports, INC hereby disclaims any liability resulting from the failure to use this part in compliance with all applicable federal and state laws.



OPTIONAL JB4 APP SHOWN

Before starting installation lock the doors, and place the key at least 20 feet away from the vehicle. Wait 10 minutes for the vehicle to go to sleep.

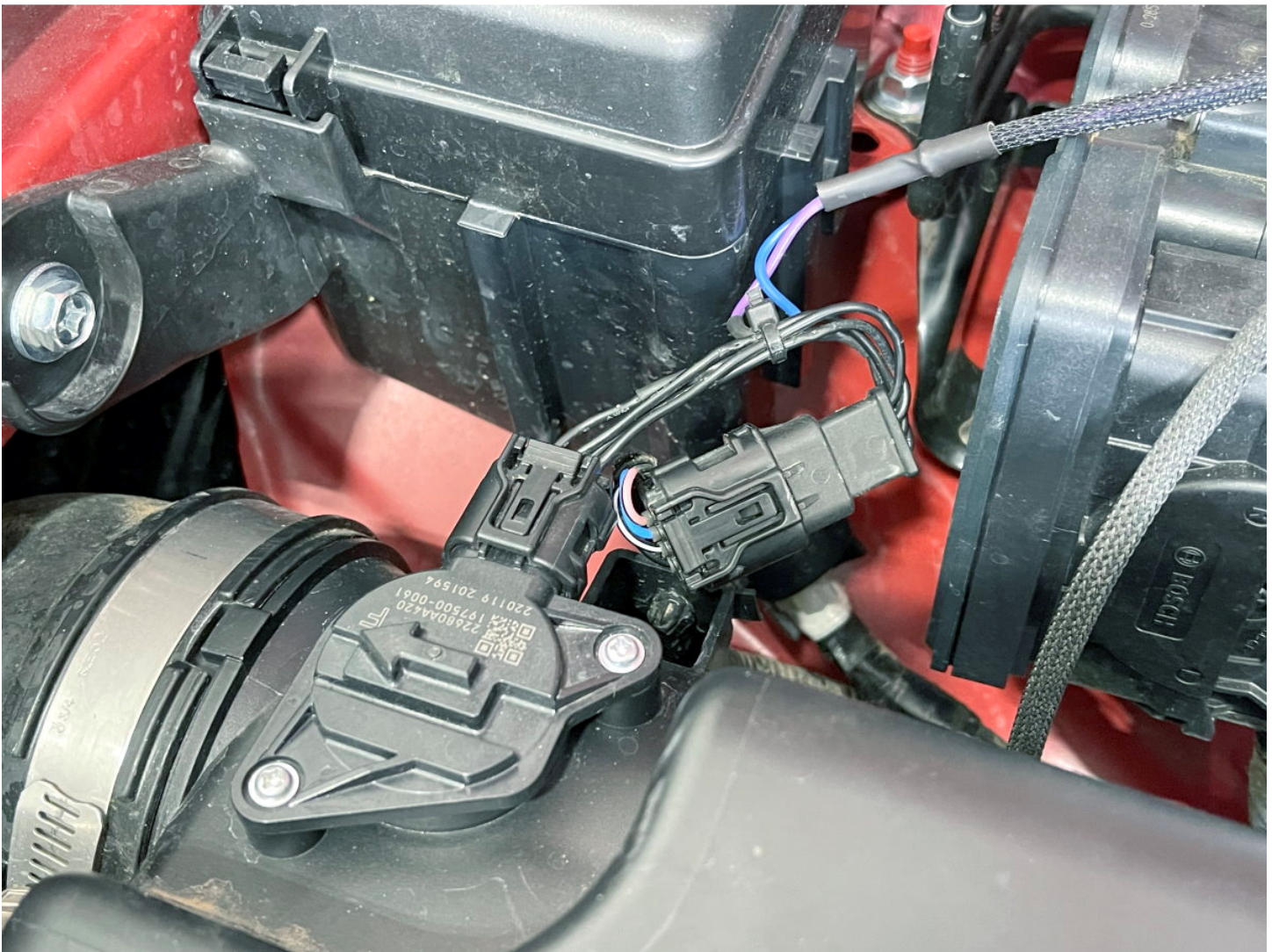
The JB4 installs to 3 connections on top of the engine, 1 connection from the bottom, and the OBDII port inside the vehicle. When installing the connections you will generally unplug the factory sensor harness, plug the JB4 in to the sensor, and plug the factory harness in to the matching JB4 harness connection completing the loop.



The MAP sensor is located on the top of the engine near the throttle body. Plug the JB4 connector in to the sensor and the OEM harness in to the JB4 harness.



The MAF sensor is located on the left side of the engine bay. Attach the JB4 connection to the sensor and the OEM harness to the JB4 harness.



The optional fuel pressure sensor is located under the intake manifold. It's most useful for those running aftermarket intakes and/or E85 fuel mixtures. All others can skip this connection to simplify the install if desired. The easiest way to remove is using needle nose pliers to simultaneously press in the release tab while gently tugging the connector up. Once disconnected plug the JB4 connection in to the sensor and the OEM harness in to the JB4 harness.



The optional EWG (electronic wastegate) connection is the most difficult to reach as it has to be attached under the vehicle. It's most useful for those running higher boost maps (3+). Those who plan to run lower maps or not concerned with every last horsepower can skip this connection to greatly simplify the install if desired.

After safely securing the vehicle on ramps, jackstands, or a lift, unscrew the various bolts holding the plastic under tray up and remove. You'll see the EWG connection near the turbo. Plug the JB4 in to the connection and the factory harness in to the JB4 harness. Take care to route the connection away from the hot turbo manifold.



If you've opted for the optional JB4 mobile adapter for smartphone integration attach that to the JB4 at this time. Open the enclosure and screw it in to the JB4 control board as shown.

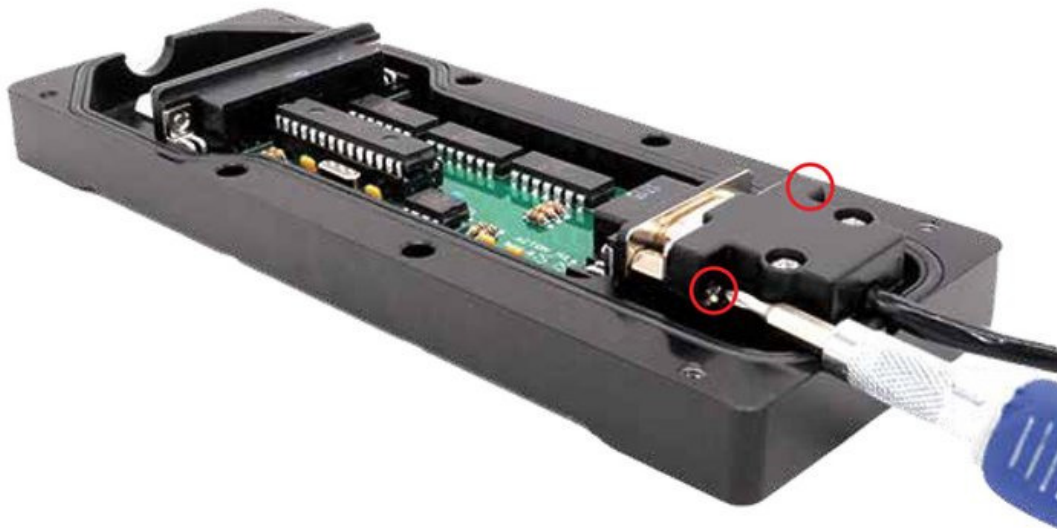
JB4 Connect Kit (Pinned Power) Install Guide

04-13-2020

1) Open the JB4 enclosure.



2) Install the DB9 connector and ensure both screws are secure.



3) Put the JB4 enclosure back together.

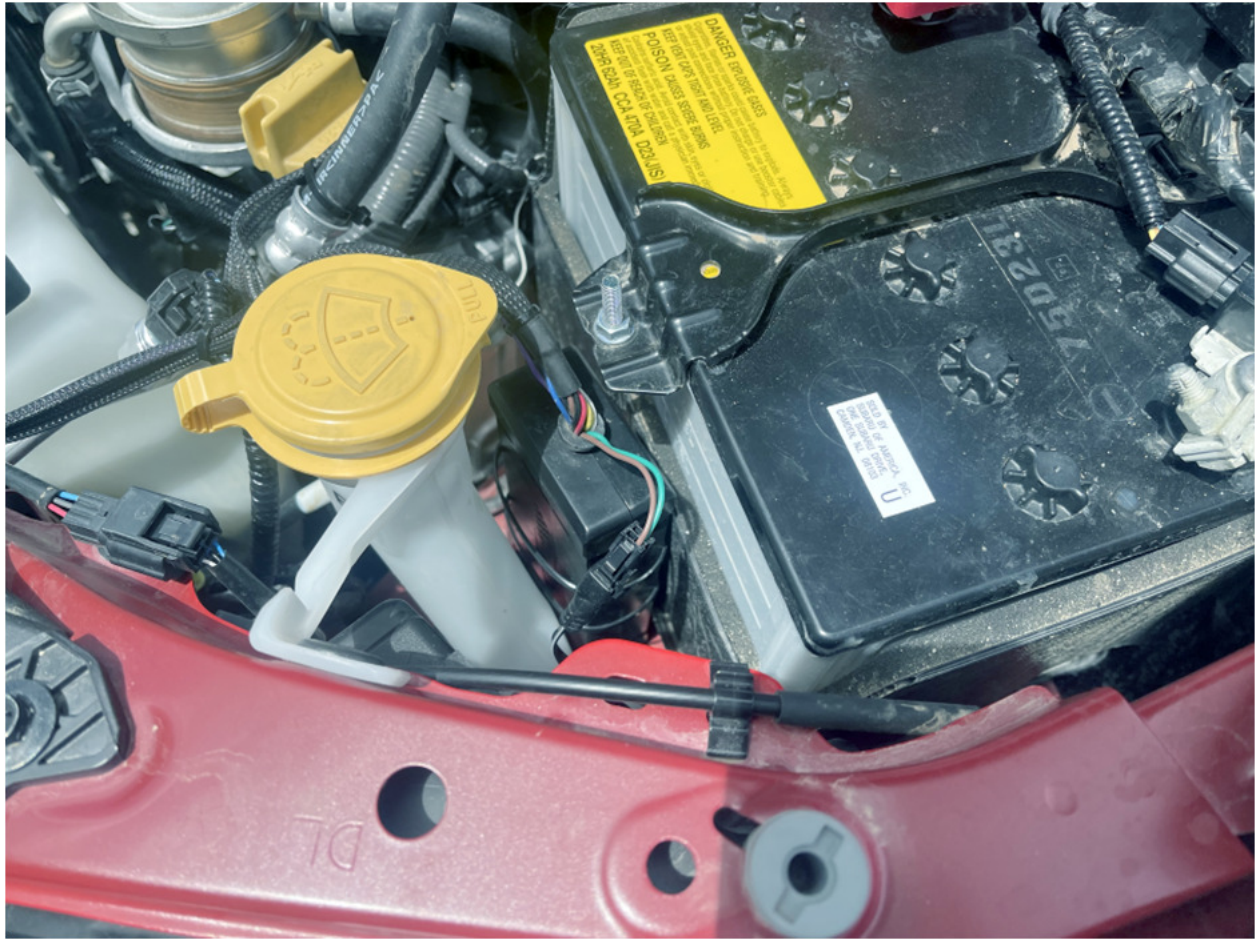


*****Very Important*****

4) Ensure the Connect Kit ***IS NOT*** in direct contact with the metal JB4 enclosure or any other nearby metal. Aim the smaller side of the Connect Kit (circled below) **DIRECTLY** towards the driver's seat for best signal quality. Failure to do this may lead to connectivity issues.



Tuck the JB4 enclosure out of the way next to the battery. If desired it can be secured with zip ties.



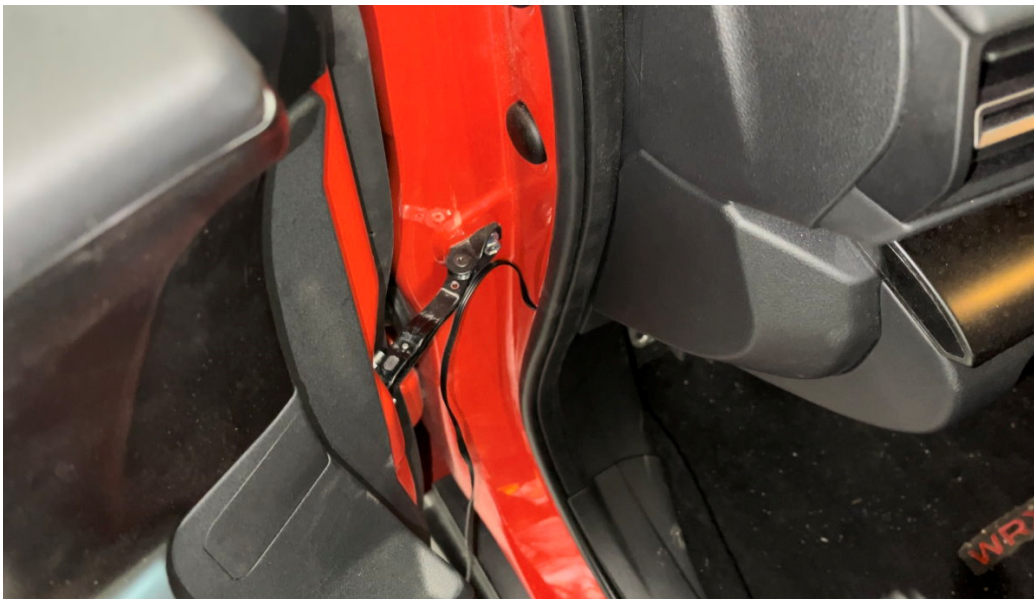
CANbus/OBDII connector: green/brown wires on JB4

Vehicle can now be unlocked, and doors opened as OBDII can be installed/connected with vehicle awake. This optional connector attaches to the OBDII port to allowing the JB4 to take in additional advanced engine parameters to incorporate in to tuning and logging via the app.



The OBDII can be run the “quick way” around the door jamb or the “clean way” through a grommet in the firewall

For the “quick” way” plug the OBDII cable in under the dash and route it under the door grommet and to the engine bay as shown.



For the “clean” way you’ll be routing the OBDII through an existing cover behind the gas pedal and in to the engine bay.





Once routed to the engine bay plug the OBDII in to the JB4 harness. Ensure latch slides over clip. It is possible to force this connection incorrectly which will result in only boost/map appear in app and no other data showing until corrected.



Installation is complete!

The JB4 comes preset to map1 which is suitable for all 91 octane and higher fuels. Refer to the map guide posted within the app and the jb4tech.com for additional map details.