



-INSTALLATION- INSTRUCTIONS



LP ADVENTURE LIFT KIT



SUBARU IMPREZA 2017-2021

CONGRATULATIONS FOR YOUR NEW LP AVENTURE LIFT KIT!

If you have any question or need assistance during the installation please contact our team. You can find the information on the last page.



IN
THE
BOX



IN THE BAGS

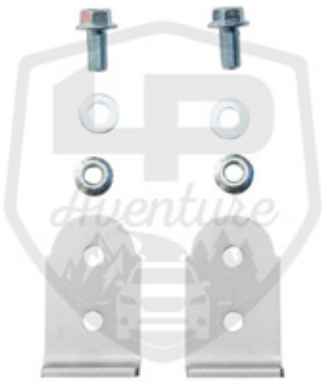
1



2



3



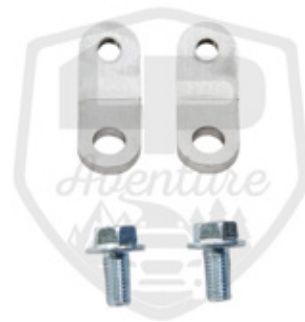
4



5



6





NECESSARY TOOLS

1. - We recommend the use of a lift
2. - Jack stand to support the sub-frame
3. - Ratchet
4. -12mm Socket
5. -14mm Socket
6. -17mm Socket
7. -19mm Socket
8. - 22mm Socket
9. -18mm Socket
10. -10mm Wrench
11. -12mm Wrench

1

REMOVE WHEELS



2

REMOVE TOP PLATE NUTS







3

REMOVE TRUNK INTERIOR





4

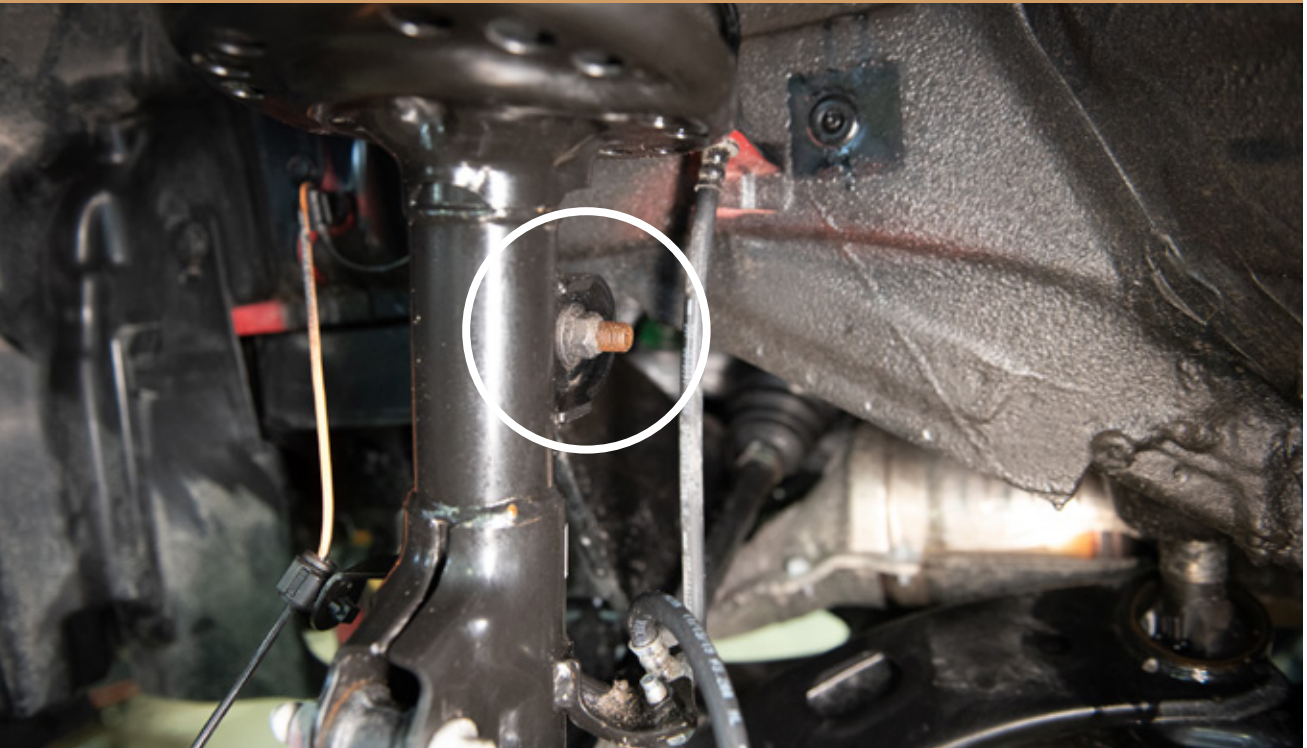
REMOVE REAR TOP PLATE NUTS





5

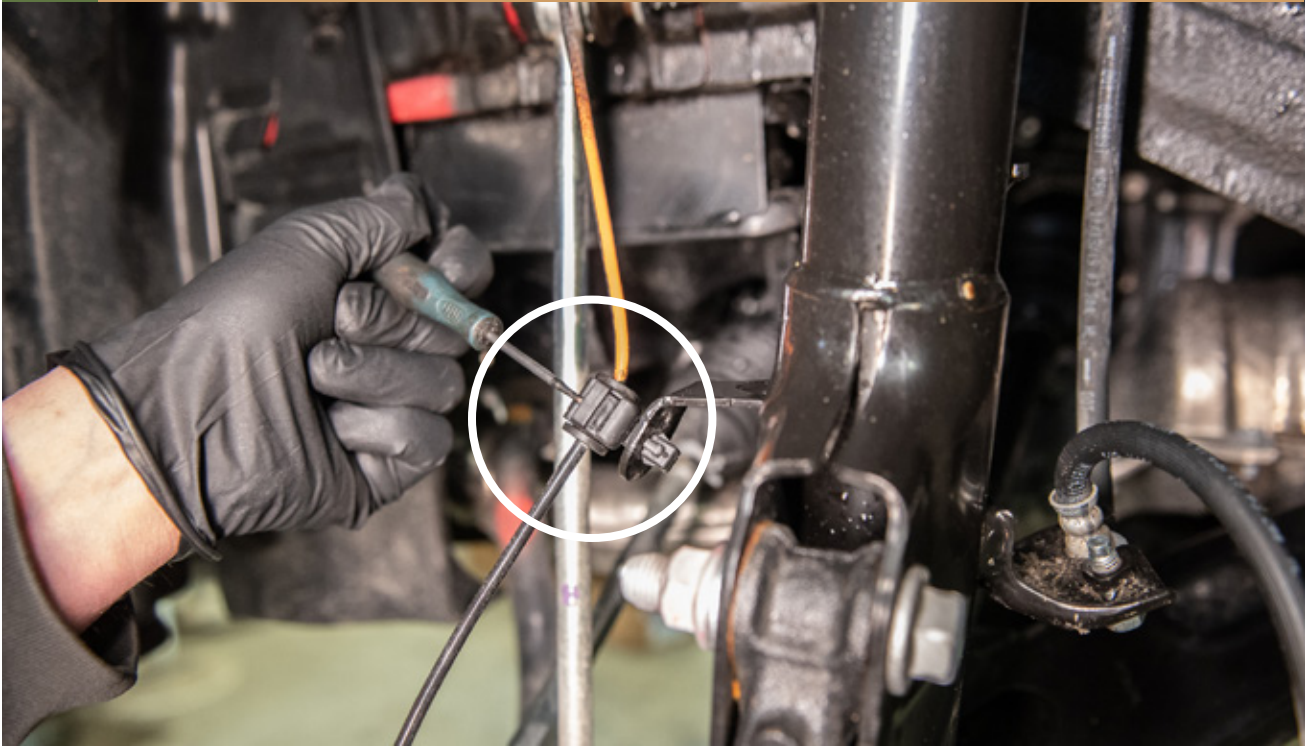
UNBOLT FRONT SWAY BAR LINK

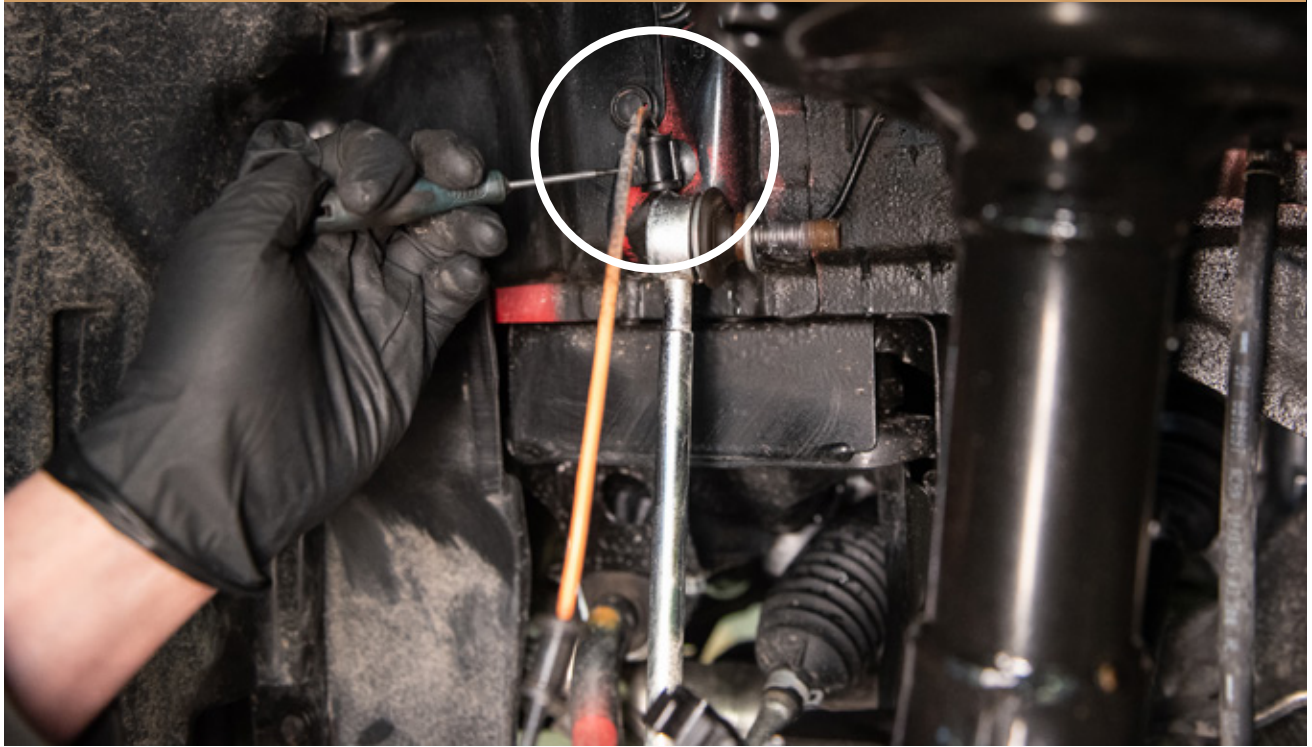




6

UNCLIP ABS SENSOR LINE





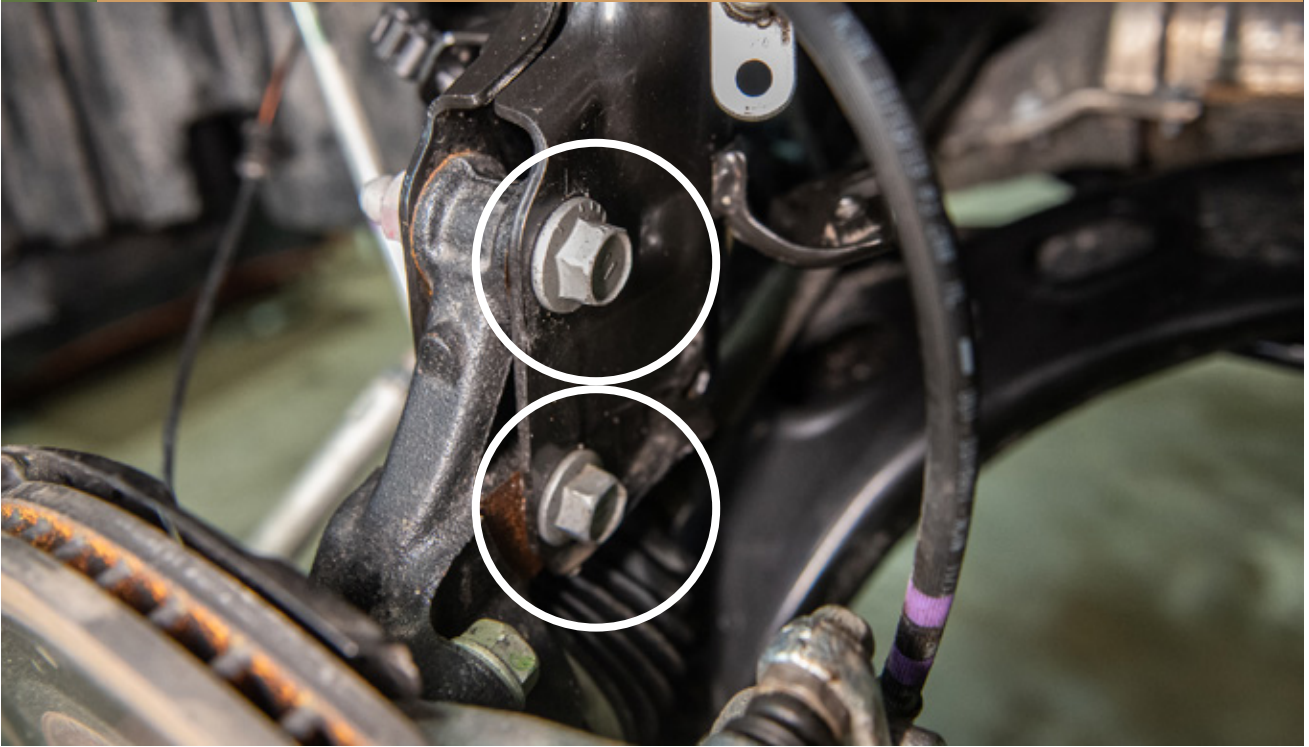
7

UNBOLT BRAKE LINE BRACKET



8

UNBOLT KNUCKLE



9

REMOVE FRONT SUSPENSION ASSEMBLY



10

INSTALL TOP PLATE SPACERS



USE A SCREW DRIVER OR PRYBAR TO HELP SUPPORT THE SUSPENSION DURING INSTALLATION



11

INSTALL SWAYBAR LINK SPACER





12

INSTALL BRAKE LINE BRACKET EXTENSION





13

RE INSTALL SUSPENSION ASEMBLY



FRONT RIGHT

FRONT LEFT



FL AND FR MARKINGS ALWAYS POINTING TOWARDS THE FRONT OF THE VEHICLE



14

RE INSTALL LOWER STRUT BOLTS



15

RE SECURE THE SWAY BAR LINK TO THE EXTENDED MOUNT



16

RE INSTALL BRAKE LINE BRACKET



17

RE CLIP ABS LINE



18

REMOVE GAS TANK PLASTICS AT THE REAR OF THE VEHICLE



19

**YOU CAN REMOVE THE HAND BRAKE CABLE BRACKET TO ALLOW YOU MORE ROOM TO WORK BUT THIS STEP IS OPTIONAL.



REMEMBER TO RE INSTALL IF YOU DID TAKE IT OFF



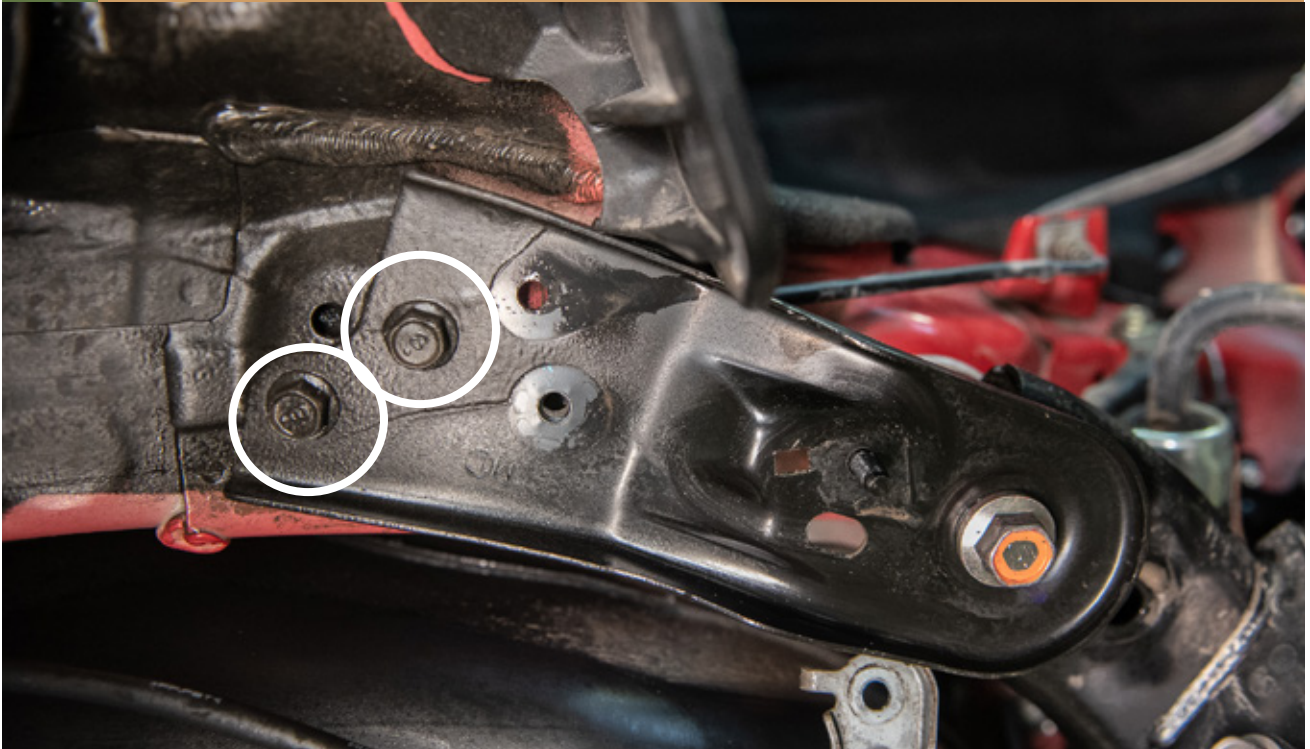
20

REMOVE BRAKE LINE BRAKET



21

REMOVE TWO BOLTS FROM SUBFRAME BRACKET



22

REMOVE SUBFRAME BOLTS



23

TEMPORARILY INSTALL THE SUPPLIED SUBFRAME BOLTS TO HELP KEEP EVERYTHING CENTERED



24

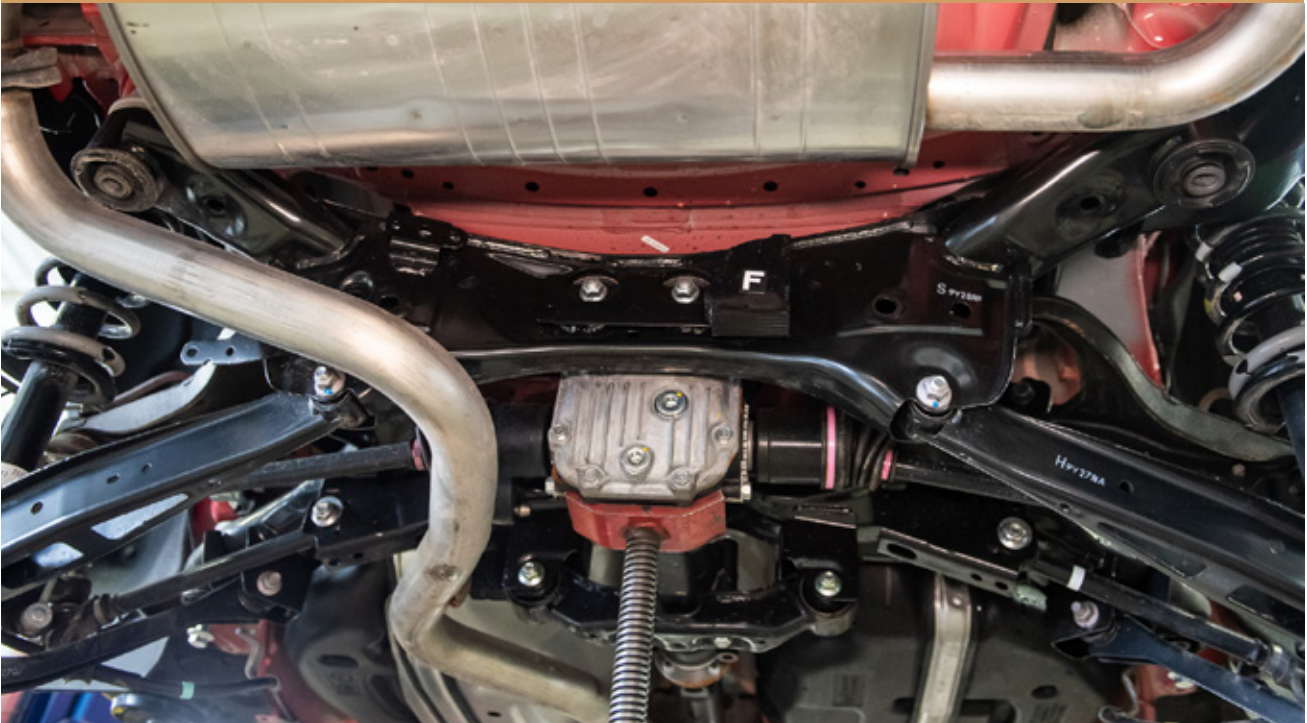
USE A JACK TO SUPPORT THE REAR DIFF



25

UNBOLT REAR SUBFRAME BOLTS





26

SLOWLY LOWER THE SUB FRAME DOWN JUST ENOUGH TO BE ABLE TO INSTALL THE SUB FRAME SPACERS



27

INSTALL SUB FRAME SPACERS



28

INSTALL THE SUPPLIED BOLTS WITH THE FACTORY PLATE INTO THE REAR OF THE SUB FRAME





SNUG UP BUT DO NOT TIGHTEN THE BOLTS COMPLETELY



29

REMOVE THE TEMPORARY BOLTS FROM THE FRONT OF THE REAR SUB FRAME



30

INSTALL THE SUB FRAME SPACERS



31

THREAD IN THE SUPPLIED SUB FRAME BOLT ALONG WITH THE FACTORY SUB FRAME SUPPORT PLATE



32

INSTALL THE SUB FRAME SUPPORT PLATE SPACERS





33

INSTALL HANDBRAKE BRACKET SPACER



34

INSTALL BRAKE LINE BRACKET SPACER



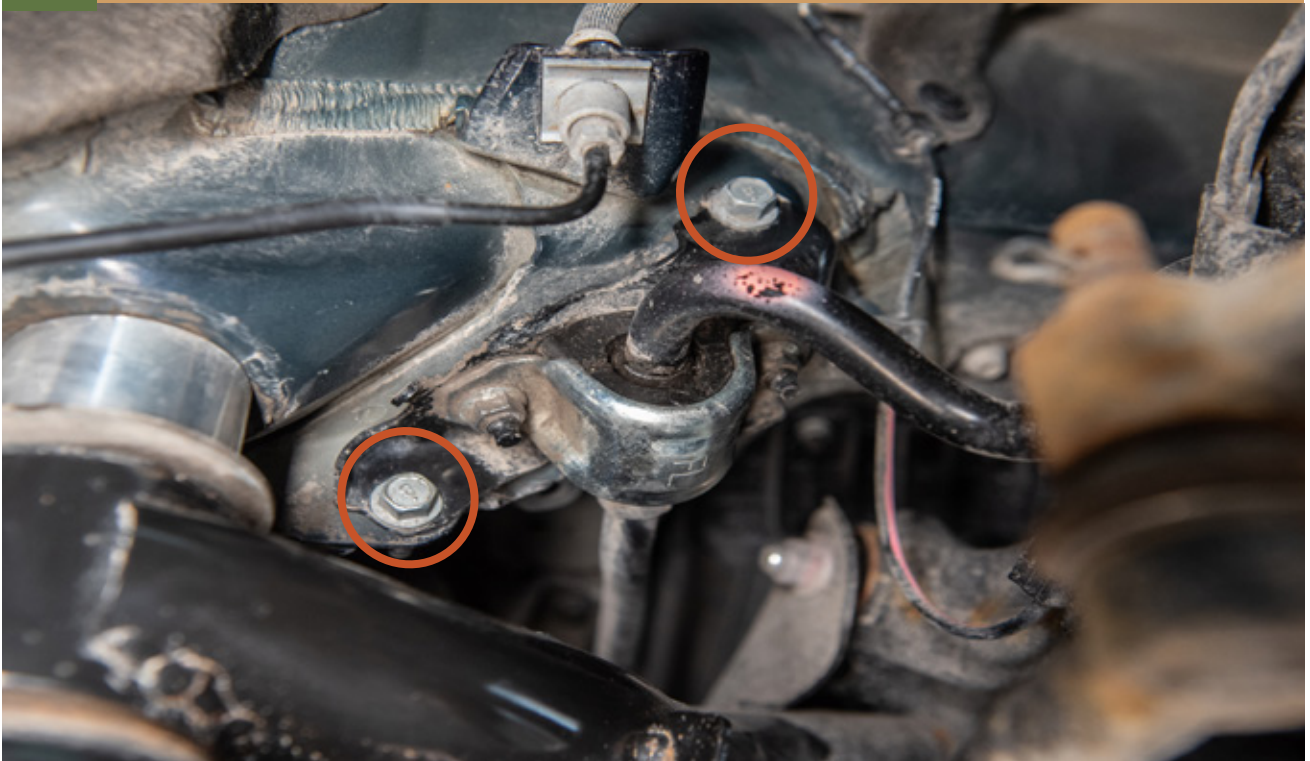
35

INSTALL THE BRAKE LINE TO THE BRAKE LINE SPACER
*MAKE SURE TO ANGLE THE BRAKE LINE BRACKET TOWARDS
THE INSIDE OF THE VEHICLE



36

REMOVE TWO BOLTS FOR THE SWAY BAR MOUNT



37

REMOVE THE NUTS THAT HOLD THE SWAY BAR TO THE MOUNT AND REMOVE THE MOUNT





38

INSTALL THE SPACER FOR THE SWAY BAR MOUNT





40

RE INSTALL SWAY BAR MOUNT TO THE VEHICLE
-START WITH THE BOTTOM BOLT FIRST



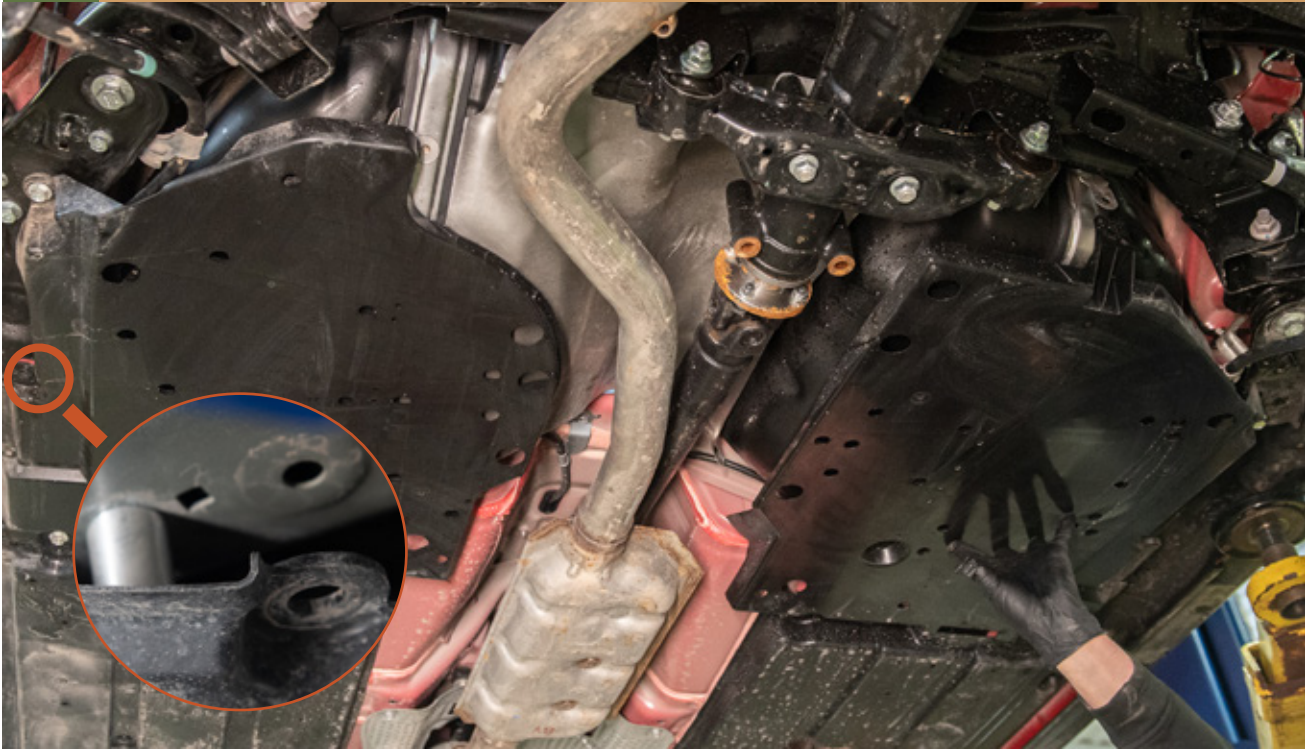
41

RE INSTALL SWAY BAR MOUNT TO THE SWAY BAR
-USE A WRENCH FOR THE INNER BOLT



42

RE INSTALL GAS TANK PLASTICS *THE PLASTIC CLIP WILL NOT BE NEEDED WHERE THE HANDREBRAKE CABLE BRACKETS ARE LOCATED



43

REMOVE LOWER KNUCKLE AND SHOCK BOLTS





44

REMOVE REAR SHOCKS



45

INSTALL THE REAR TOP PLATE SPACERS.



46

RE INSTALL REAR SHOCK ASSEMBLY



47

RE INSTALL LOWER BOLTS FOR SHOCKS AND KNUCKLES



48

FINAL TIGHTEN ALL HARD WARE



49

RE INSTALL AND TIGHTEN TOP STRUT NUTS AND THEN YOU CAN RE INSTALL THE TRUNKS INTERIOR



50

RE INSTALL WHEELS



INSTALLATION COMPLETE!



▼
NOTES:

****Tighten all the bolts to the manufacturer's specifications with a Torque Wrench****

**Double check your work.
Reinstall the wheels and be sure to tighten
the nuts with a torque wrench.**

Wheel alignment is required after installation.

**Products warnings:
<https://lpaventure.com/pages/products-warnings>**

**Limited product warranty:
<https://lpaventure.com/pages/limited-prod->**



**You have completed the installation.
Thank you for your interest
in our products.**

**For all requests, information or
assistance: Contact our team
by phone at
1 (866) 562-1316**

**We are available Monday to Friday
Between 8AM and 5PM (EST).**

**Or by email at :
SALES@LPAVENTURE.COM
WWW.LPAVENTURE.COM**

NOW, ENJOY THE RIDE!