

BMS Billet Intake for 2019+ G20 B58 BMW M340i & 340iX

Last updated 1/29/2020

Use subject to terms and conditions posted at <https://burgertuning.com/pages/terms>

THIS PART IS LEGAL FOR USE ONLY IN COMPETITION RACING VEHICLES AS DEFINED UNDER CALIFORNIA LAW, AND IS NOT LEGAL FOR USE IN ANY OTHER MOTOR VEHICLE. California law defines a "racing vehicle" as "a competition vehicle not used on public highways." (Calif. Health & Safety Code 39048) This part may only be used on competition racing vehicles operated exclusively on a closed course in conjunction with a sanctioned racing event. Competition-only motor vehicles may not be driven to a racing event on a public highway and must be transported on a trailer or other carrier. USE OF THIS PART IN ANY OTHER VEHICLE MAY SUBJECT YOU TO FINES AND PENALTIES FOR VIOLATION OF FEDERAL AND/OR STATE LAW, WILL VOID YOUR WARRANTY FROM BURGER MOTORSPORTS, INC, AND CAN VOID YOUR VEHICLE'S WARRANTY. It is your responsibility to comply with all applicable federal and state laws relating to use of this part, and Burger Motorsports, INC hereby disclaims any liability resulting from the failure to use this part in compliance with all applicable federal and state laws.



Tools Needed:

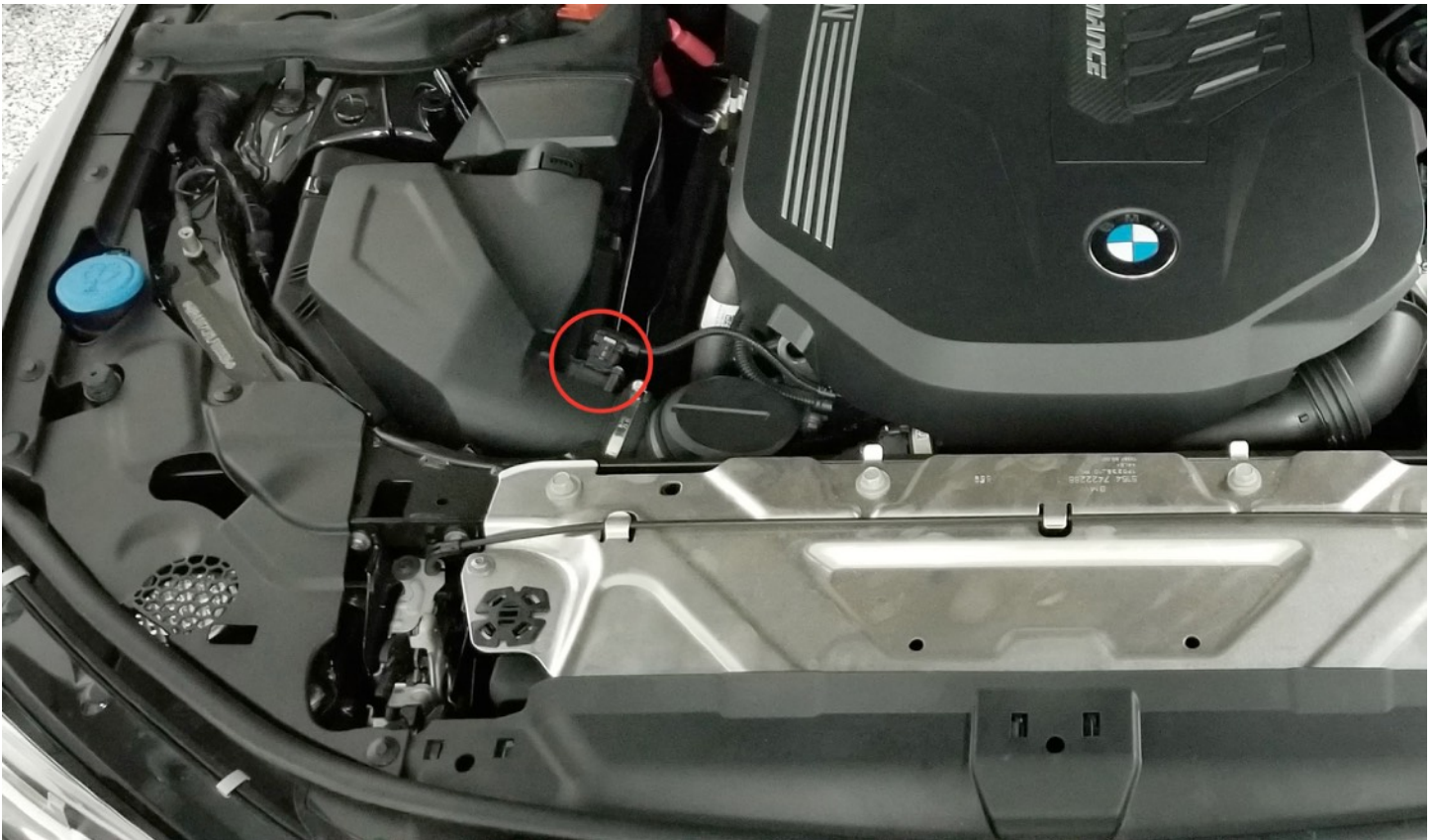
Flat head screwdriver (unclip factory airbox clips, tighten filter, and factory hose clamp)

T15 Torx (removing factory “MAF” temperature sensor)

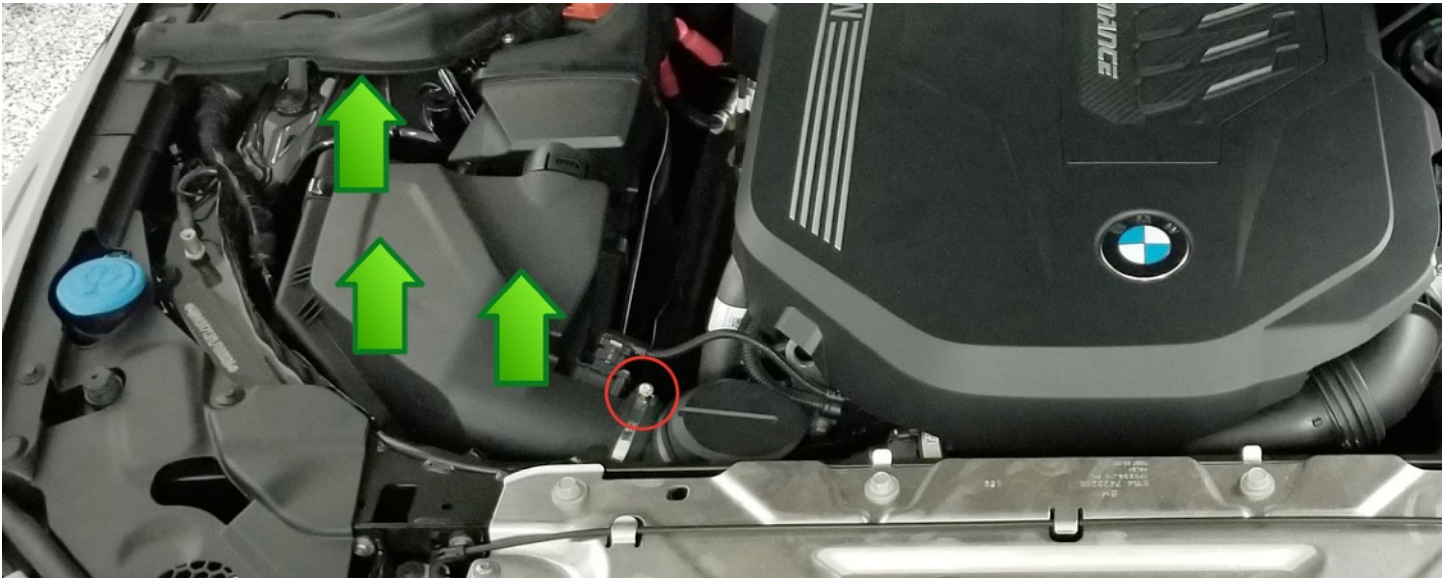
7/64” allen/hex wrench

13mm socket (bolt intake bracket to car)

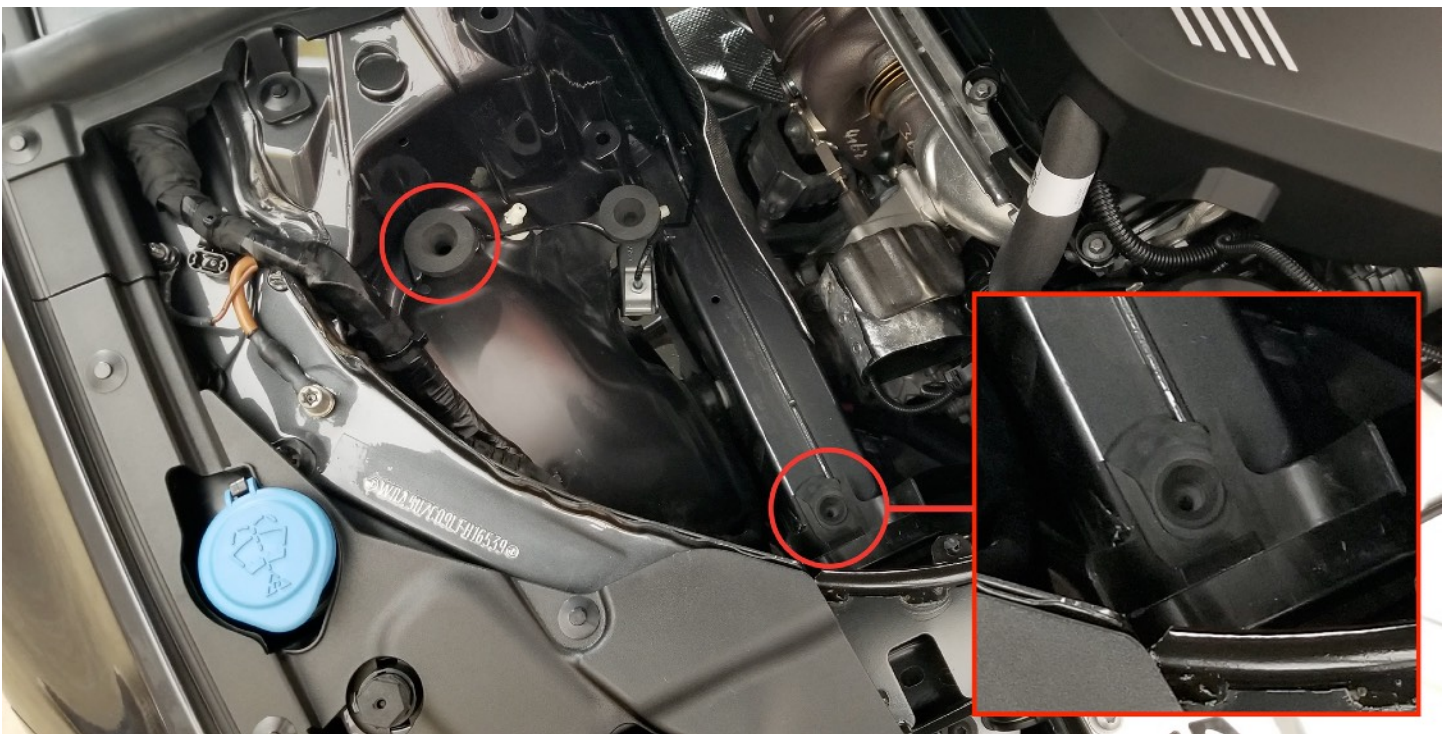
Remove the “MAF” temperature sensor from the factory airbox lid using a T15 Torx tool. Once the factory torx screws are removed screw them back into the factory intake for safe keeping with the “MAF” sensor still plugged into the car. Unplugging it may cause a check engine light.

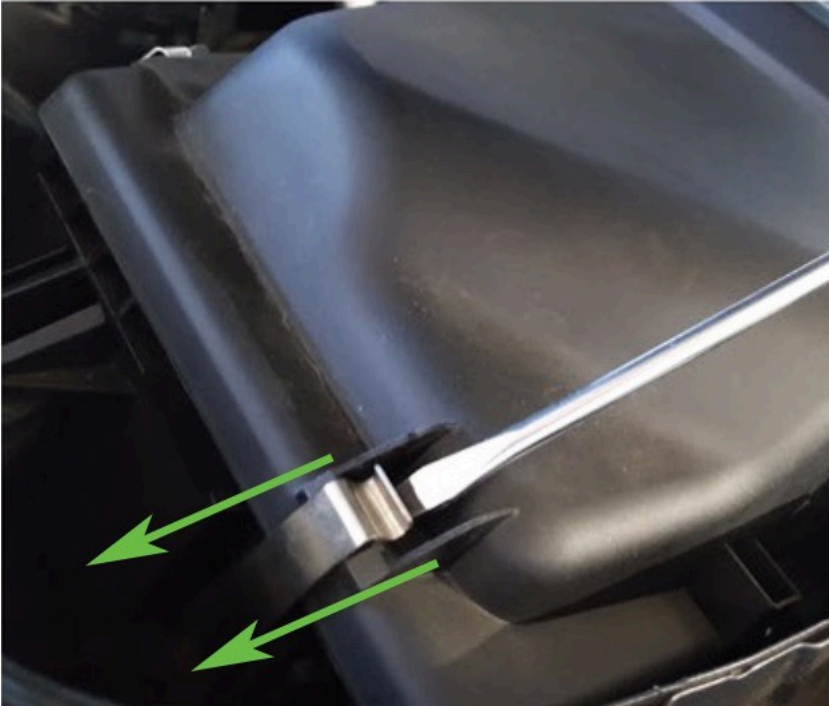


Loosen the hose clamp with a flat head screwdriver and pull the factory airbox straight up to remove.



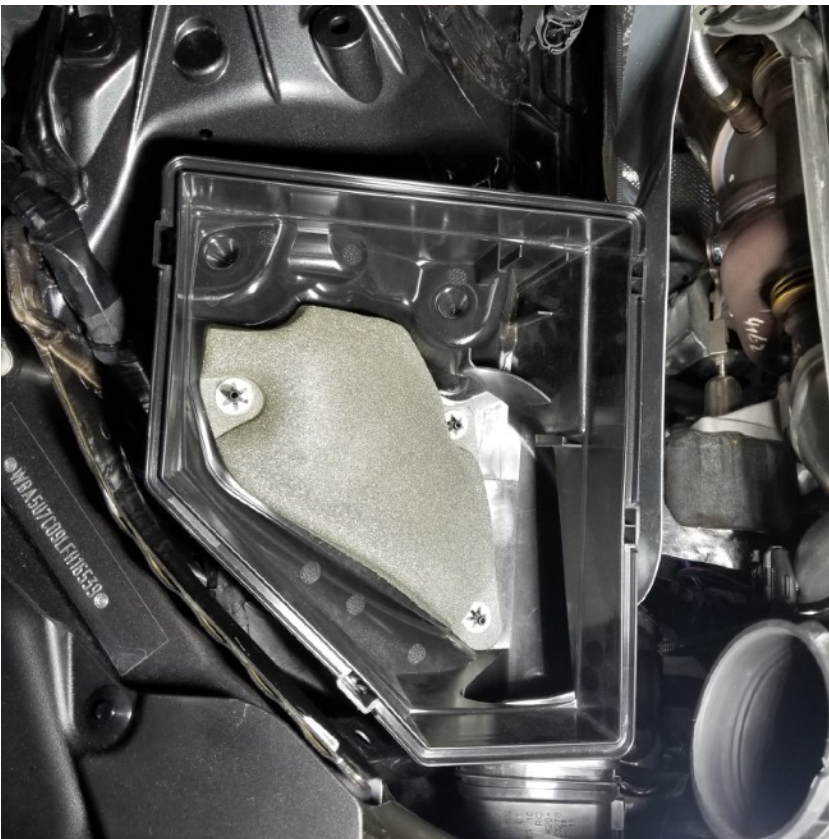
There will be a round rubber grommet and a rectangle rubber grommet stick to the airbox bottom. These must be removed and put back on the car before reinstalling the factory airbox bottom.





Pop the factory air box lid clips open and remove the lid. Bend and remove the factory clips from the side of the airbox by bending them outwards down almost horizontal. Then bring them straight up and push down to remove. They will need to change shape a little before they can be removed. The silver heat shield will need to be temporarily removed for this step.

This video is helpful:
https://www.youtube.com/watch?v=3Xaiae_ym5Q

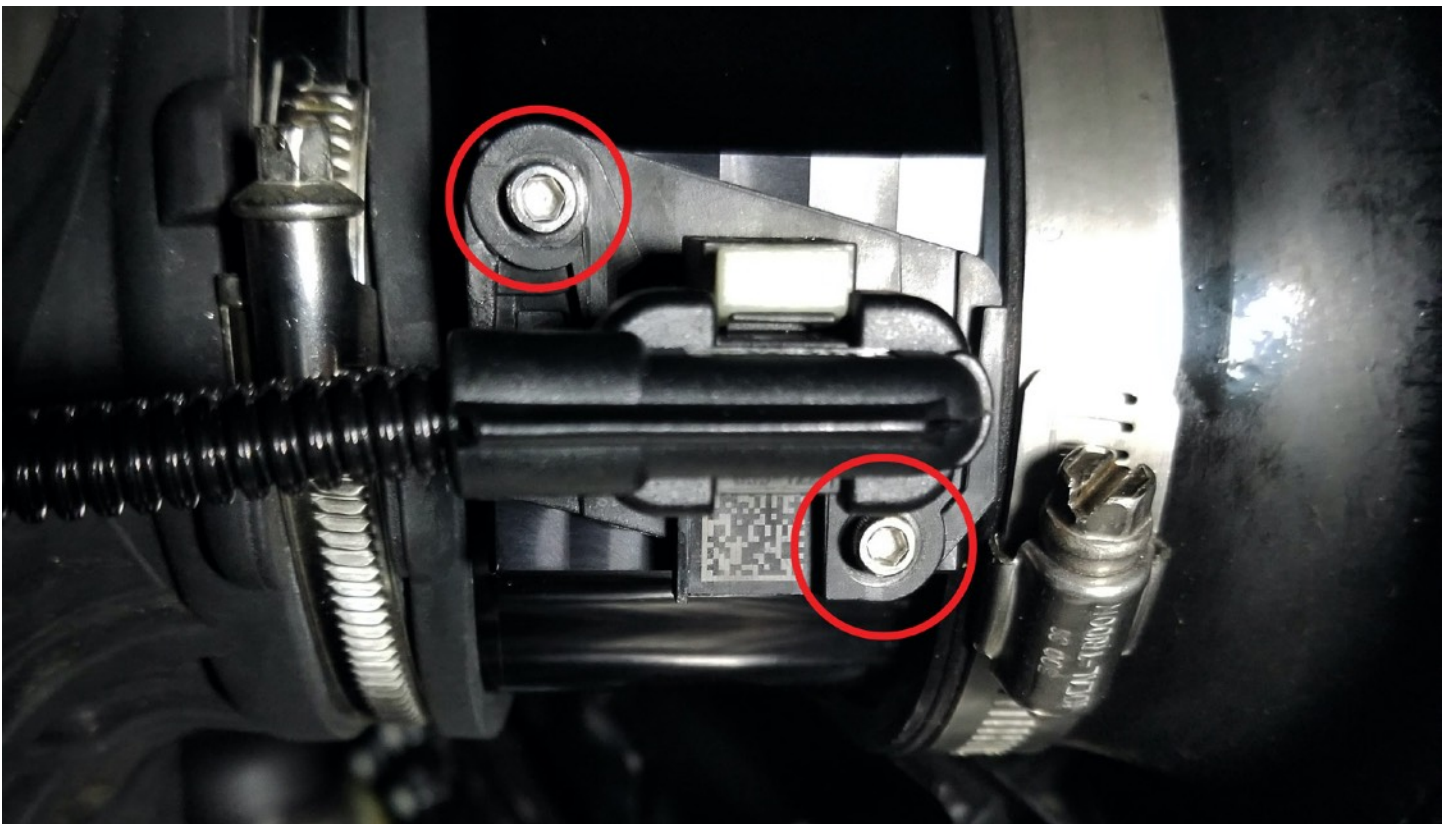


Put the factory airbox back in the vehicle. Wiggle it around to make sure it's secure.

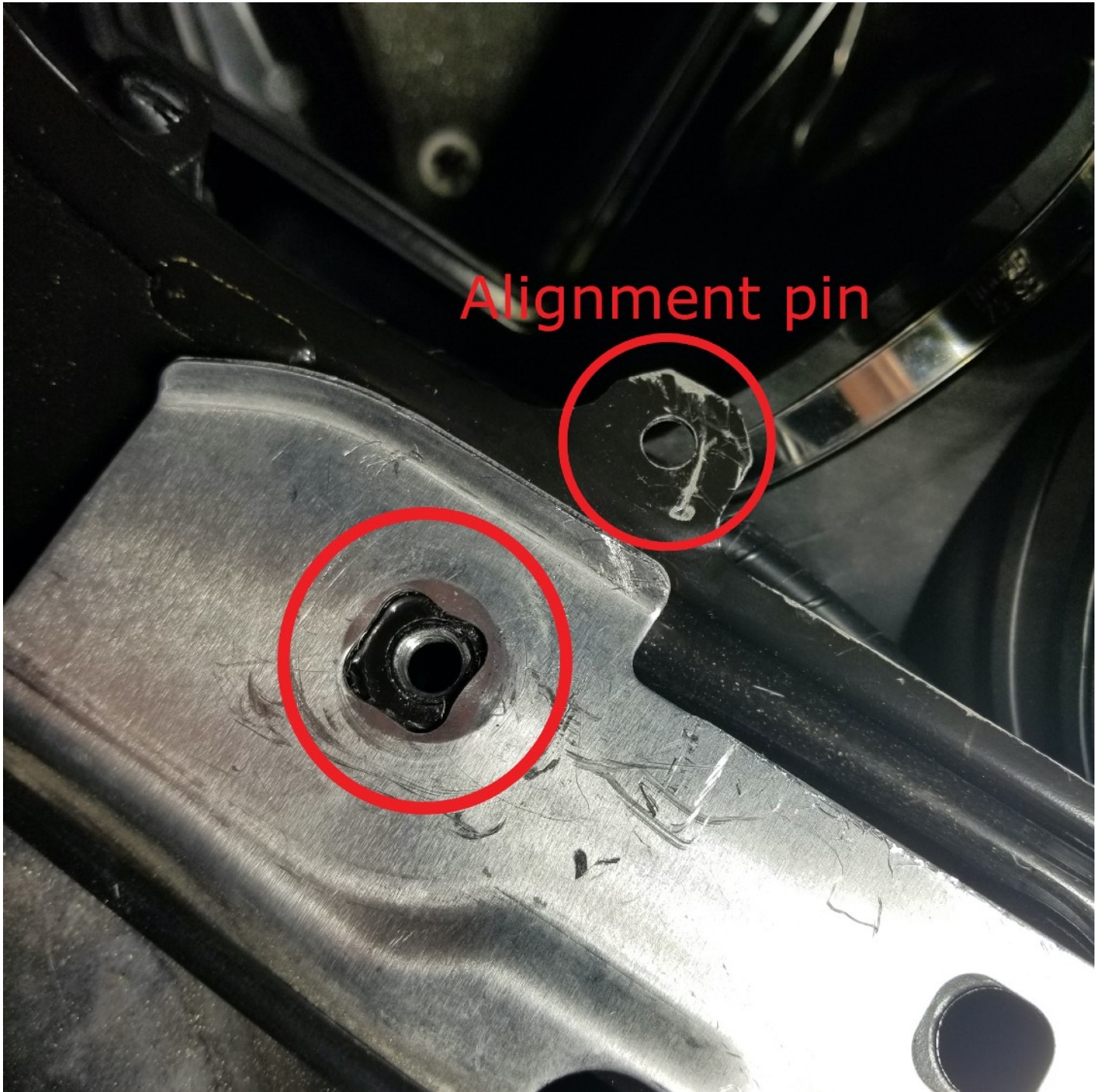
Carefully attach the filter to the BMS intake and tighten the hose clamp.



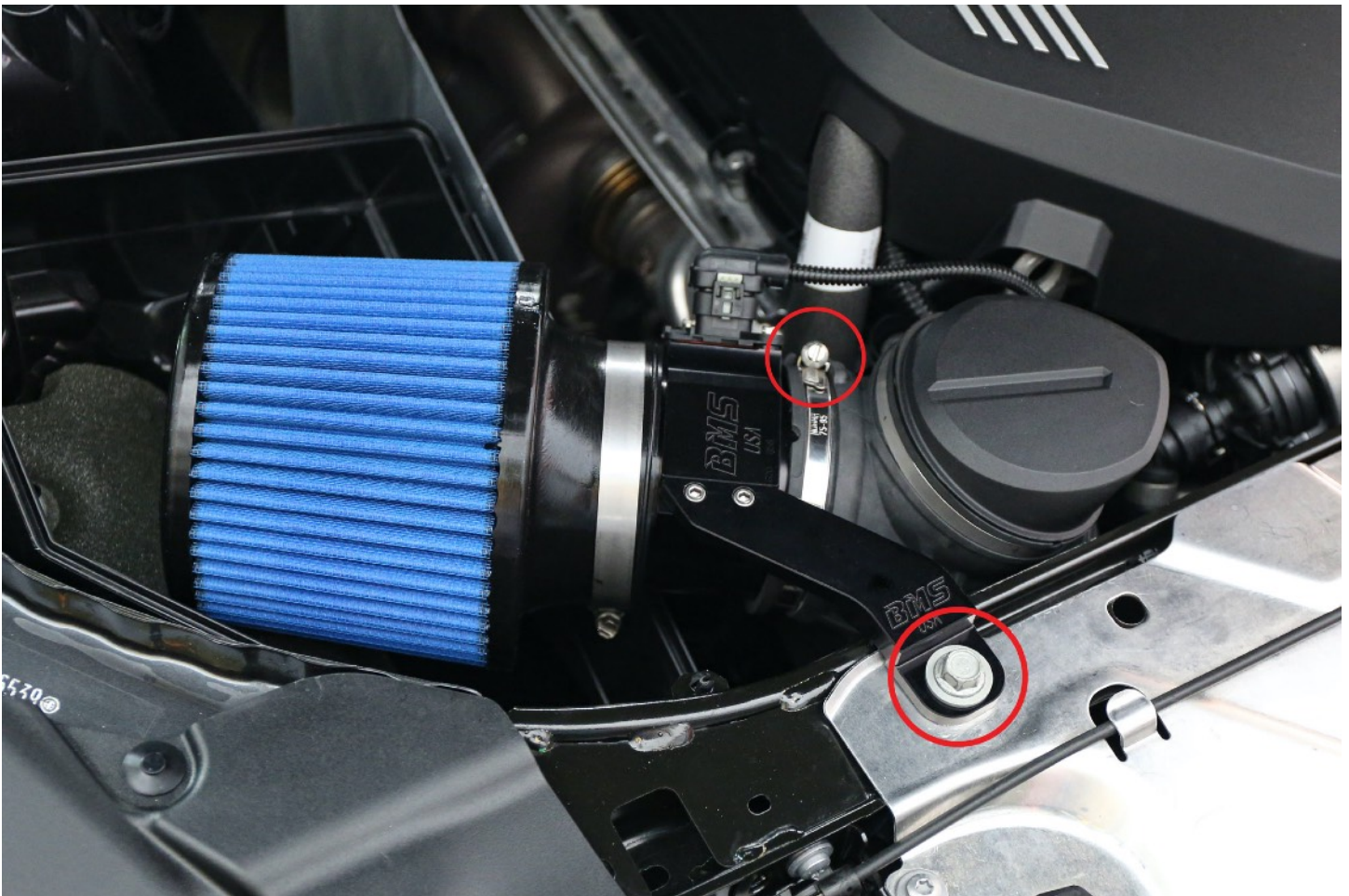
Attach the “MAF” temperature sensor with the provided 7/64” allen screws to the BMS intake.



Now remove bolt the intake to the car with the factory 13mm bolt.
There is a silver alignment pin under the bracket that goes in this hole. 13mm bolt needs to be removed from the other area in the red circle.



Bolt the BMS bracket intake in with the factory 13mm bolt. Be sure the silver alignment pin is in the hole mentioned above. Then stretch the factory rubber inlet tube up and over the bis intake. Make sure these is aligned well over the end of the BMS intake and tighten the factory hose clamp.



NOTE: Having in the lower half of the factory airbox installed will keep the factory heat shield in place and direct fresh cool air into the filter.

