

## 2020+ Tesla Model Y Mud Flap Installation Instructions

View instructions and photos online [www.rallyarmor.com](http://www.rallyarmor.com)

**CARE AFTER INSTALLATION** Once installed, the vehicle owner is responsible for the condition of the mud flaps and all costs associated with replacing damaged or lost parts. Warranty covers manufacturer defect on new, never installed parts.

⚠ Watch for blind spots when parking ⚠ Avoid contact with curbs, bumps and objects that can compress the flaps with excessive force. Be sure to check wheel clearances, especially on vehicles equipped with aftermarket wheels and suspensions.

QUESTION ON INSTALLATION? CONTACT [www.rallyarmor.com/support](http://www.rallyarmor.com/support)

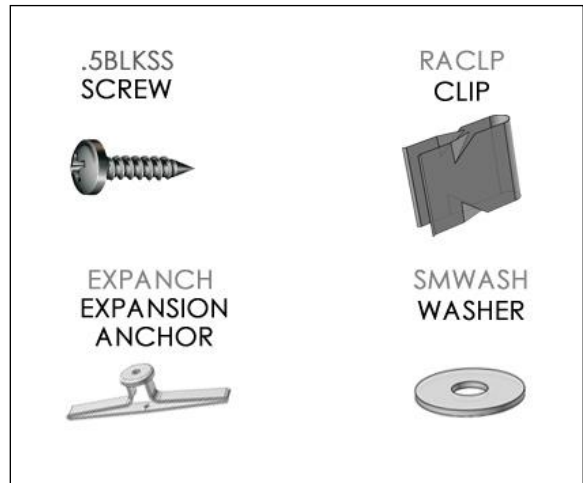
**NEED REPLACEMENT PARTS? SEND RECEIPT OR PHOTO OF RALLY ARMOR LOGO ON FLAPS TO [www.rallyarmor.com/support](http://www.rallyarmor.com/support)**

### IMPORTANT NOTES

### INSTALLATION KIT CONTENTS



QUANTITY	PART	ITEM ID
8	SCREW	.5BLKSS
8	WASHER	SMWASH
12	RA CLIP	RACLP
8	EXPANSION ANCHOR	EXPANCH
1	PAPER GUIDE RACLP LEFT/RIGHT FRONT	IMF72 GUIDE
1	PAPER GUIDE RACLP LEFT/RIGHT REAR	



**Recommended Tools** Offset or ratcheting Phillips screwdriver; Flathead screwdriver; marker.

**Important Tips** Installation should be done on an even surface. Do not use power tools to tighten hardware. Hand tools only. Avoid overtightening.

### RALLY ARMOR - A BIT ABOUT OUR STANDARD IN MUD FLAPS

Rally Armor mud flaps are fabricated from a high grade polyurethane plastic that is rigorously reviewed for quality and consistency. As with all manufacturing processes, controlled conditions and multiple QC checkpoints minimize major irregularities, however certain very minor surface layer marks appear periodically. These are visual variations that do not affect construction nor do they impede the performance of the flaps. Most matte away as the material ages naturally with continued exposure to the outdoors. Each flap is unique in appearance yet all are equally structurally sound.

## 2020+ Tesla Model Y Mud Flap Installation Instructions

### FRONT MUD FLAP

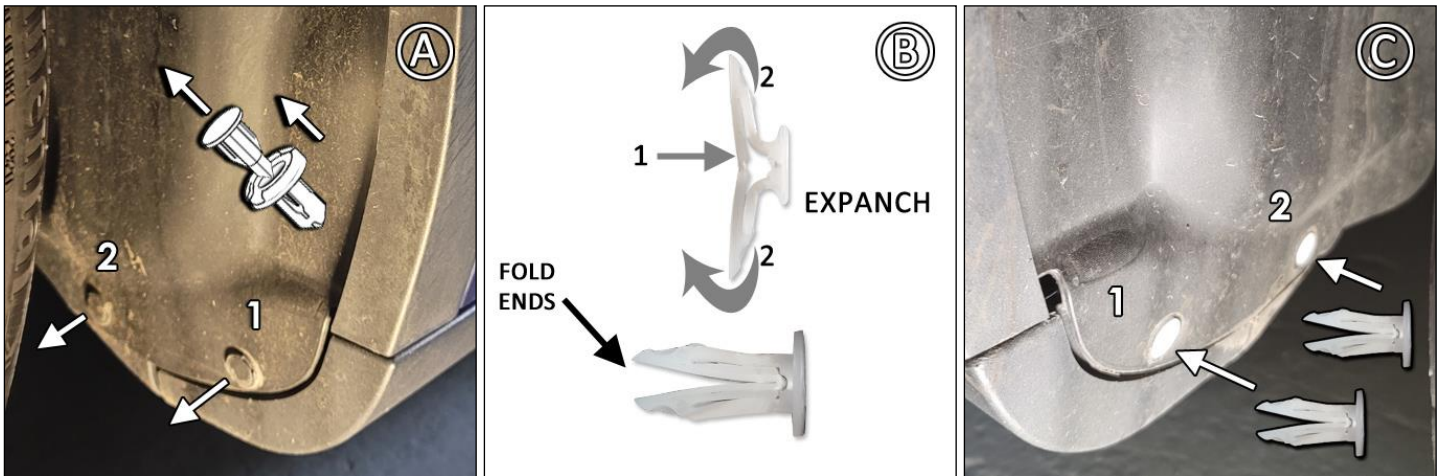
Hardware x Front Flap → 2 x .5BLKSS; 2 x EXPANCH; 3 x RACLP; 2 x SMWASH

Turn the steering wheel towards the side you are working on to gain access to the inner wheel well area.

**FIGURE A** Remove fasteners 1 and 2.

**FIGURE B** Press stem ends of 2 EXPANSION ANCHORS EXPANCH inwards.

**FIGURE C** Push ANCHORS into mounting points 1 and 2 until flush.



**FIGURES D** Place mud flap logo-side facing rear of vehicle against lower mounting points. Install SCREW .5BLKSS and WASHER SMWASH through mounting points 1, 2. Do not fully tighten.

**FIGURE E** Place inner edge of flap against flare. To position mud flap for final alignment adjustment, temporarily mount edge of RA CLIP onto fender flare and mud flap. **DO NOT INSTALL CLIP.** Align flap to even ground.

**FIGURE F** Measure then mark installation point of RA CLP 30mm down from top end of flap and install RA CLP. Install center of 2<sup>nd</sup> RACLP 85mm from center of top clip. Install 3<sup>rd</sup> RACLP 85mm from center of middle clip. Ensure body of the mud flap is flush against fender flare. Adjust as needed. Apply pressure against screw head to immobilize insert from spinning. Tighten lower mounting points until washers are seated against the mud flap. Do not overtighten.



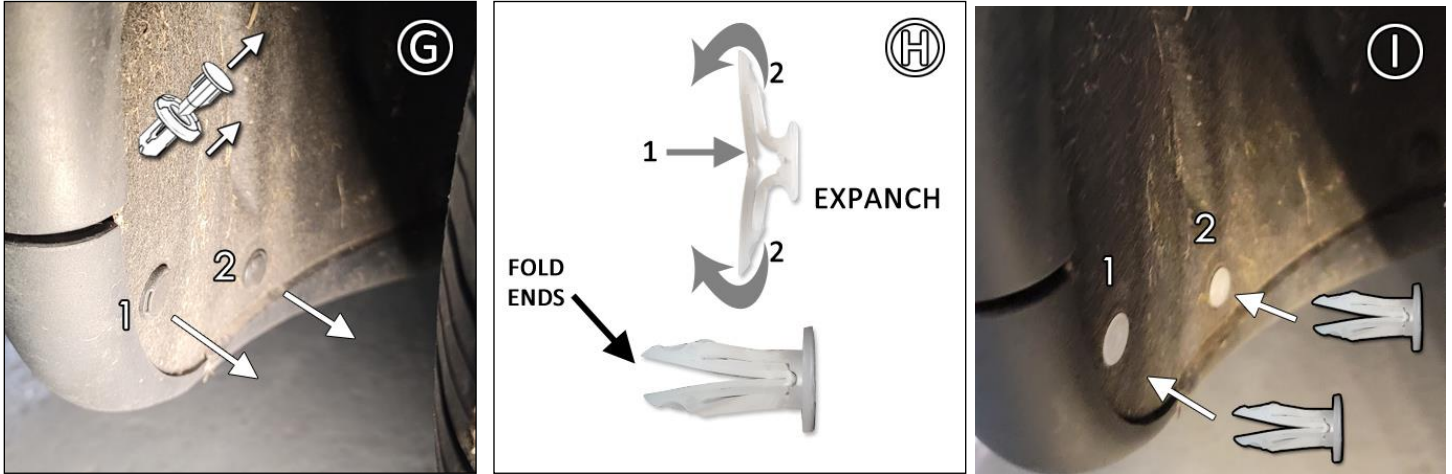
## 2020+ Tesla Model Y Mud Flap Installation Instructions

### REAR MUD FLAP

Hardware for Rear Flap → 2 x .5BLKSS; 2 x EXPANCH; 3 x RACLIP; 2 x SMWASH

**FIGURE G** Remove inner fender liner fasteners 1 and 2.

**FIGURE H/I** Press stem ends of 2 EXPANSION ANCHORS EXPANCH inwards. Push into mounting points 1 and 2 until flush.



**FIGURE J** Place mud flap logo-side facing rear of vehicle against corresponding lower mounting points. Install SCREW & WASHER through mounting points 1, 2. Do not fully tighten.

**FIGURE K** Align interior portion of mud flap against flare. To position mud flap for final alignment adjustment, temporarily mount edge of RA CLIP onto liner. **DO NOT INSTALL CLIP.** Align flap to even ground.

**FIGURE L** Measure then mark installation point of RA CLIP 25mm down from top end of flap. Locate and use center of RACLIP to mount. Install center of 2<sup>nd</sup> RACLIP 85mm down from center point of topmost clip. Install 3<sup>rd</sup> RACLIP 65mm down from 2<sup>nd</sup> RACLIP center. Mud flap should seat flush against fender flare. Align flap to even ground. Apply pressure against screw heads to immobilize insert from spinning. Tighten lower mounting points until washers are seated against the mud flap. Do not overtighten.

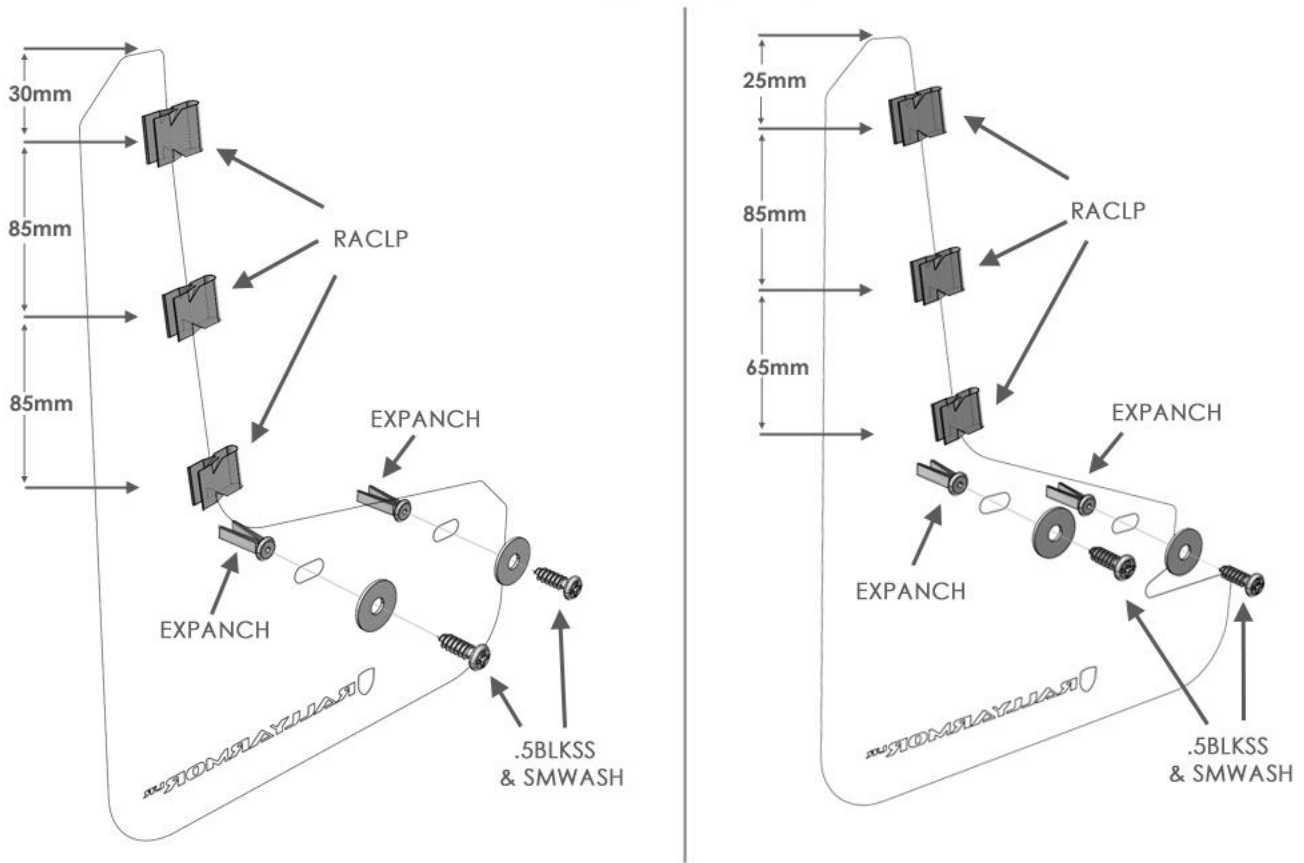


# IMF72



## 2020+ Tesla Model Y Mud Flap Installation Instructions

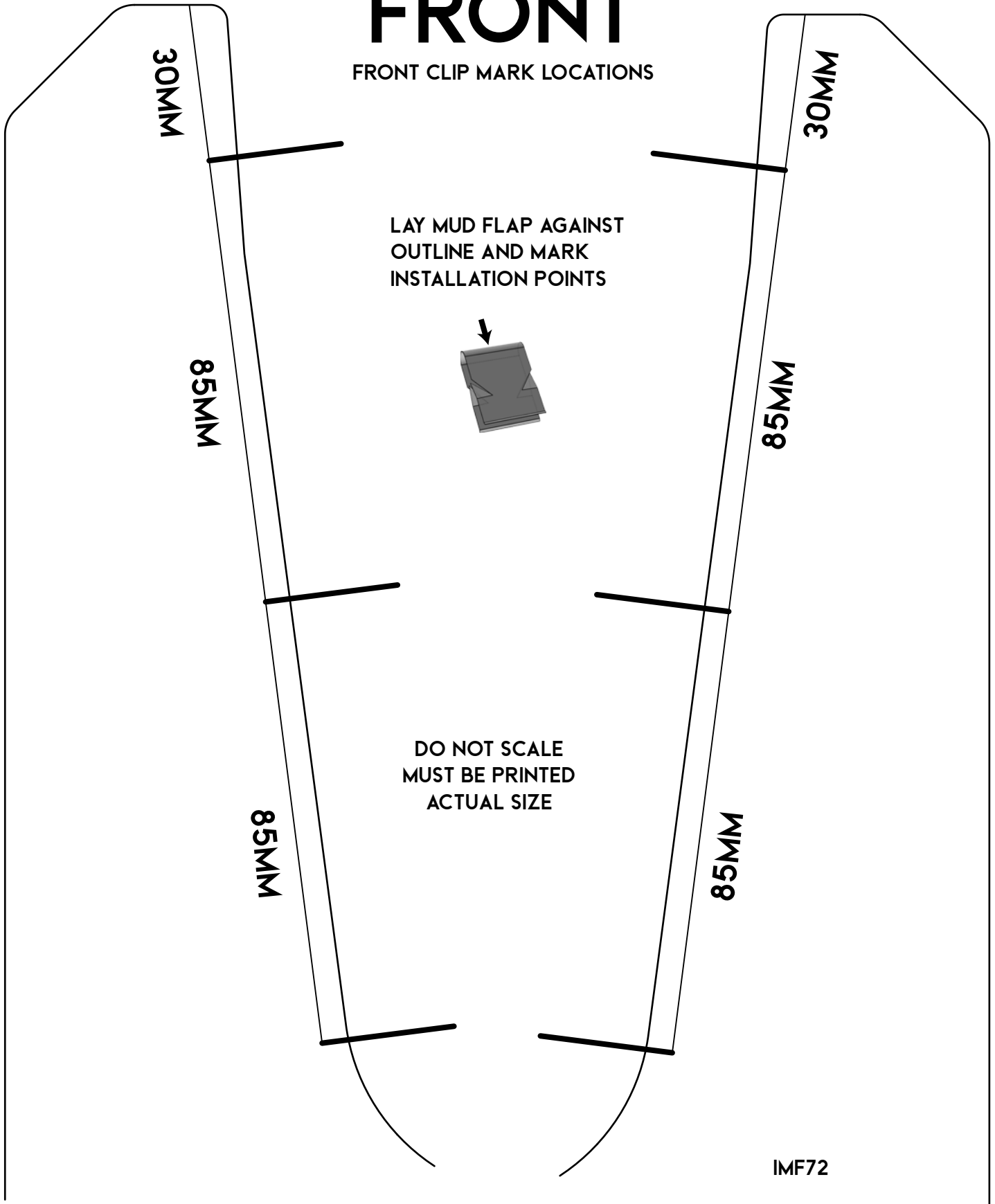
### FRONT REAR MF72 MOUNTING DIAGRAM



Content and images are copyright of Rally Armor® LLC

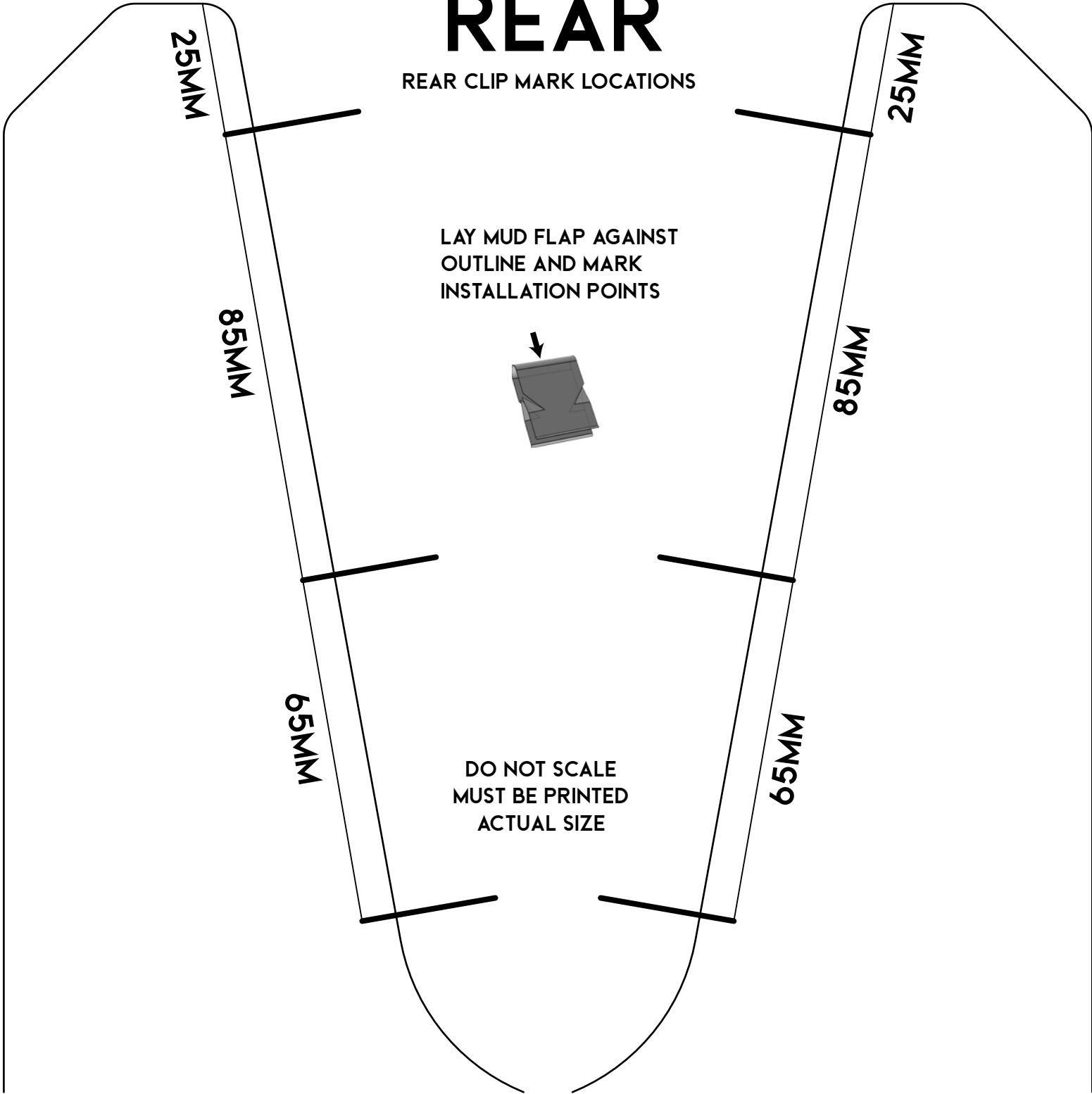
# FRONT

FRONT CLIP MARK LOCATIONS



# REAR

REAR CLIP MARK LOCATIONS



IMF72