

2016+ Dodge Durango SRT Mud Flap Installation Instruction

View instructions and photos online www.rallyarmor.com

CARE AFTER INSTALLATION Once installed, the vehicle owner is responsible for the condition of the mud flaps and all costs associated with replacing damaged or lost parts. Warranty covers manufacturer defect on new, never installed parts.

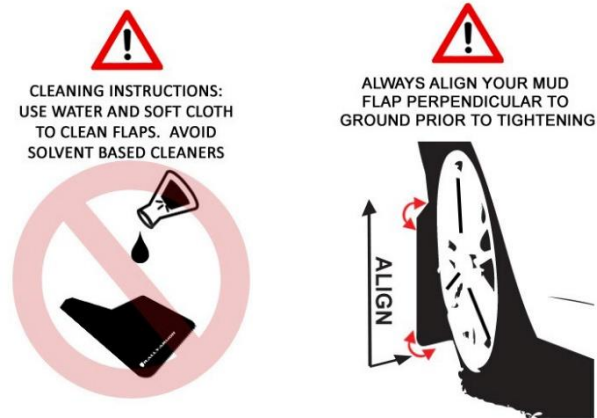
⚠ Watch for blind spots when parking ⚠ Avoid contact with curbs, bumps and objects that can compress the flaps with excessive force. Be sure to check wheel clearances, especially on vehicles equipped with aftermarket wheels and suspensions.

QUESTION ON INSTALLATION? CONTACT US ONLINE www.rallyarmor.com/support

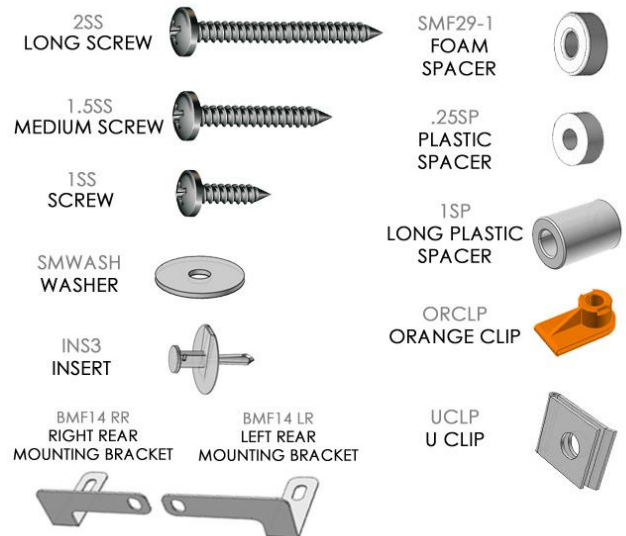
NEED TO PURCHASE REPLACEMENT PARTS? SEND RECEIPT OR PHOTO OF RALLY ARMOR LOGO ON FLAPS TO US www.rallyarmor.com/support

IMPORTANT NOTES

INSTALLATION KIT CONTENTS



QUANTITY	PART	ITEM ID
8	SCREW	1SS
4	MEDIUM SCREW	1.5SS
2	LONG SCREW	2SS
16	WASHER	SMWASH
4	ORANGE CLIP	ORCLP
6	U CLIP	UCLP
4	FOAM SPACER	SMF29-1
4	PLASTIC SPACER	.25SP
2	LONG PLASTIC SPACER	1SP
4	INSERT	INS3
1	MOUNTING BRACKET LEFT REAR	BMF14-LR
1	MOUNTING BRACKET RIGHT REAR	BMF14-RR



Recommended Tools Low-profile offset or ratcheting screw driver, 7/16th wrench, flathead screwdriver.

Important Tips Installation should be done on an even surface. Do not use power tools to tighten hardware. Hand tools only. Avoid overtightening.

RALLY ARMOR - A BIT ABOUT OUR STANDARD IN MUD FLAPS

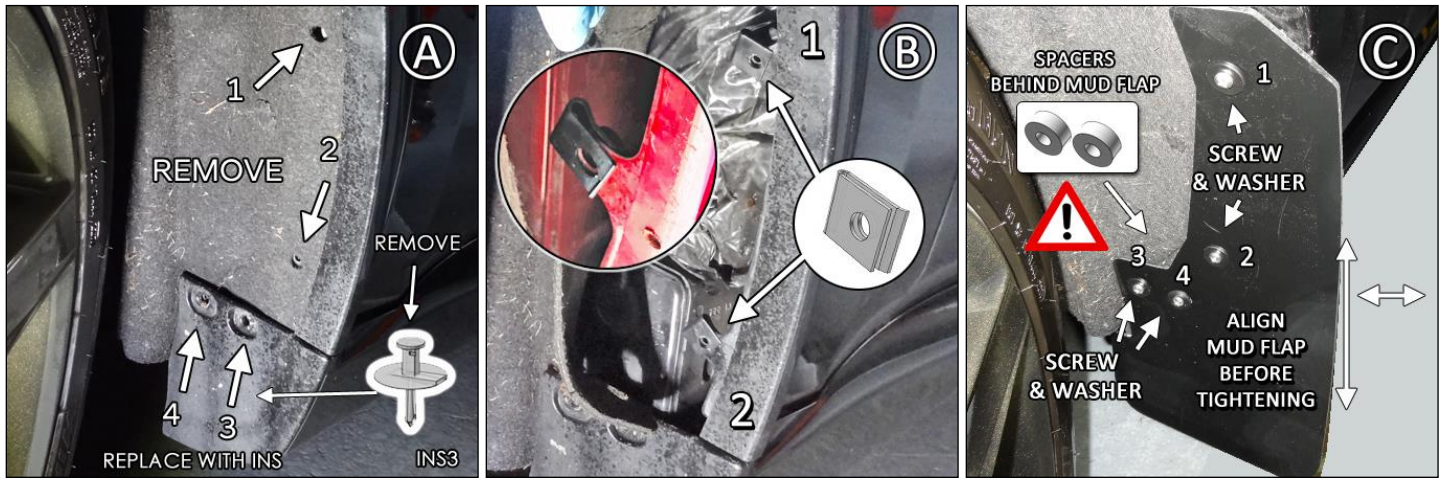
Rally Armor mud flaps are fabricated from a high grade polyurethane plastic that is rigorously reviewed for quality and consistency. As with all manufacturing processes, controlled conditions and multiple QC checkpoints minimize major irregularities, however certain very minor surface layer marks appear periodically. These are visual variations that do not affect construction nor do they impede the performance of the flaps. Most matte away as the material ages naturally with continued exposure to the outdoors. Each flap is unique in appearance yet all are equally structurally sound.

2016+ Dodge Durango SRT Mud Flap Installation Instruction

FRONT MUD FLAP Hardware 1 x Front Flap → 2 x .25SP; 4 x 1SS; 4 x SMWASH; 2 x UCLP; 2 X INS3

Turn steering wheel towards side you are working on to gain access to interior wheel well.

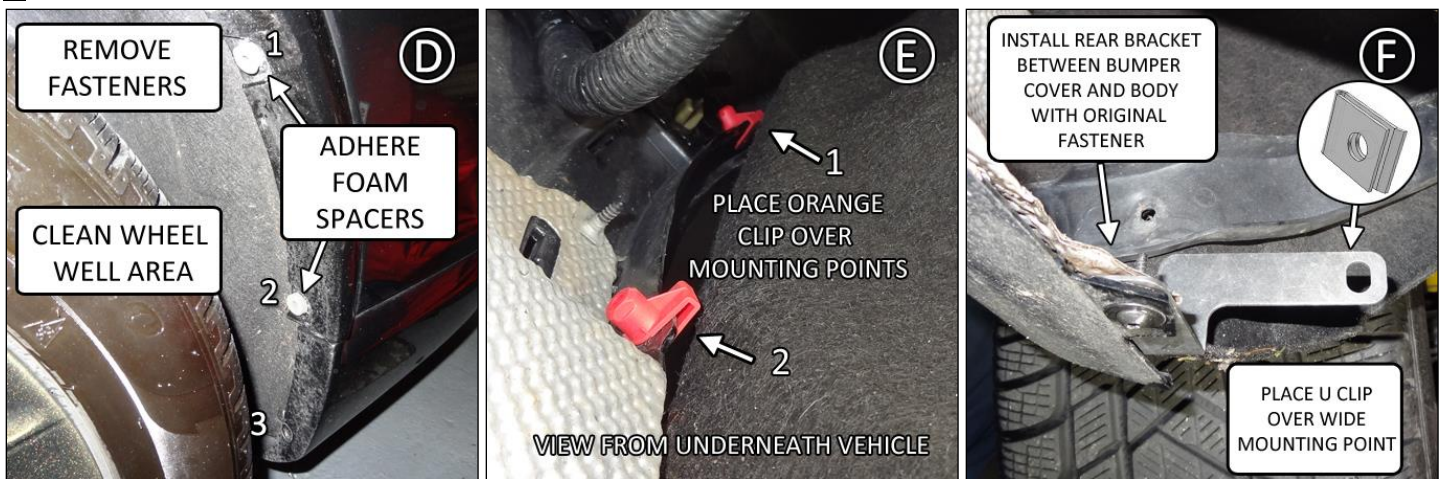
- A** Remove fender fastener 1 - 4. Remove inner screw from INS3 and install in mounting points 3 and 4.
- B** Install U CLIP UCLP over mounting point 1 and 2.
- C** Logo-side of flap facing rear of vehicle, place a PLASTIC SPACER in skirt recess 3 and 4. Install SCREW 1SS with WASHER SMWASH though corresponding mounting points. Hand tighten until washers are seated against flap.



REAR MUD FLAP Bracket/Hardware 1 x Rear Flap → 2 x 1.5SS; 1 x 2SS; 1 x BMF14; 2 x ORCLP; 2 x SMF29-1; 4 x SMWASH;

1 x UCLP

- D** Remove fender fasteners 1 - 3. If fender flare is present clean wheel well then stick FOAM SPACER SMF29-1 over point 1 & 2.
- E** Under vehicle rear, install ORANGE CLIP ORCLP over mounting point 1 and 2.
- F** Use factory fastener to install narrow slot of BRACKET BMF14 between bumper skin and body. Place U CLIP over BRACKET wide slot.



- G** Logo of flap facing rear of vehicle, install MEDIUM SCREW 1.5SS & WASHER through point 1 and 2. Re-install original fastener and

2016+ Dodge Durango SRT Mud Flap Installation Instruction

WASHER through point 3. Install LONG SCREW 2SS & WASHER through point 4 tightening until flush.

H/I Ensure LONG SCREW is threaded through U CLIP on MOUNTING BRACKET. Adjust flap then hand tighten until washers are seated.

