

VERUS ENGINEERING

Rear Differential Cooling Plate – A90 Toyota Supra Install Manual



Author: Eric Hazen
Release Date: 2020/05/18
Approvals: E. Hazen, C. Warner

Document Revisions

Rev	Date	Author	Description
01	2020/05/18	E. Hazen	Initial release of install manual

Confidential: Property of Verus Engineering. Not for Distribution outside intended recipient list.

Rear Diff Cooling Plate, Toyota Supra – Install Manual

CONTENTS

1. Introduction	<3>
1.1. Overview	<3>
1.2. Difficult	<3>
1.3. Time Required	<3>
1.4. Tools Needed	<3>
1.5. Rear Diff Cooling Plate Components	<3-4>
2. Rear Diff Cooling Plate Install	<4-6>

Rear Diff Cooling Plate, Toyota Supra – Install Manual

1. Introduction

1.1. Overview: Detailed instructions on installing our rear differential cooling plate for the A90 MKV Toyota Supra

1.2. Difficulty: Easy

1.3. Time Required: 0.5 hour

1.4. Tools Needed:

1.4.1. 8mm Socket

1.4.2. Ratchet

1.4.3. 2.5mm Allen Wrench

1.4.4. Extension



1.5. Rear Diff Cooling Plate Components

1.5.1. Assembled Cooling Plate

1.5.2. Hardware Bag

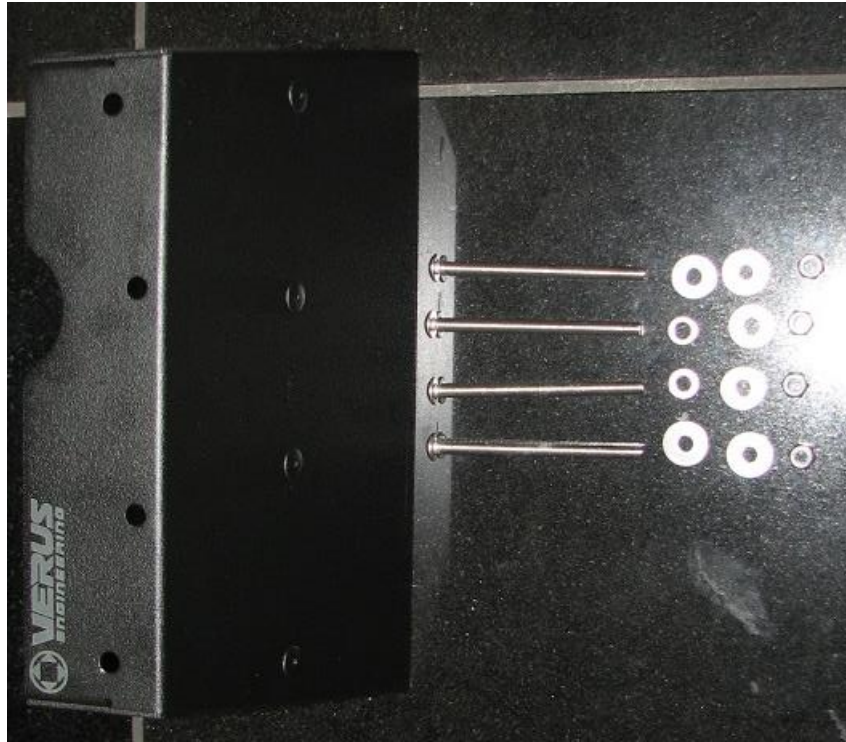
1.5.2.1. (4) M5 x 0.8 BHCS (Button Head Cap Screw) x 70mm Long, Stainless

1.5.2.2. (6) M5 Fender Washer, Stainless

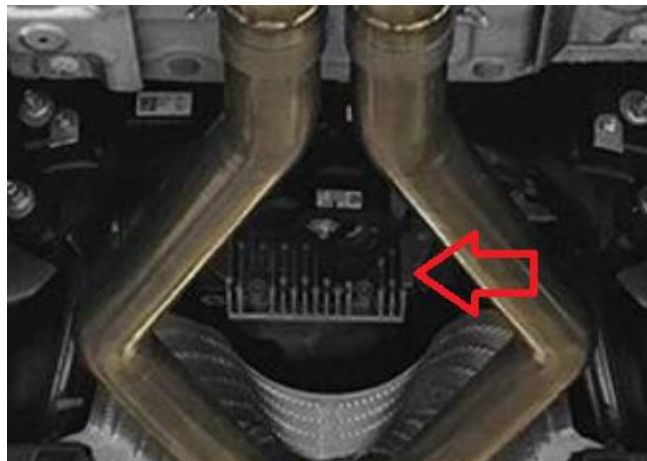
1.5.2.3. (2) M5 Flat Washer, Stainless

1.5.2.4. (4) M5 x 0.8 Nyloc Nut, Stainless

Rear Diff Cooling Plate, Toyota Supra – Install Manual

**2. A90 Toyota Supra Rear Diff Cooling Plate Install**

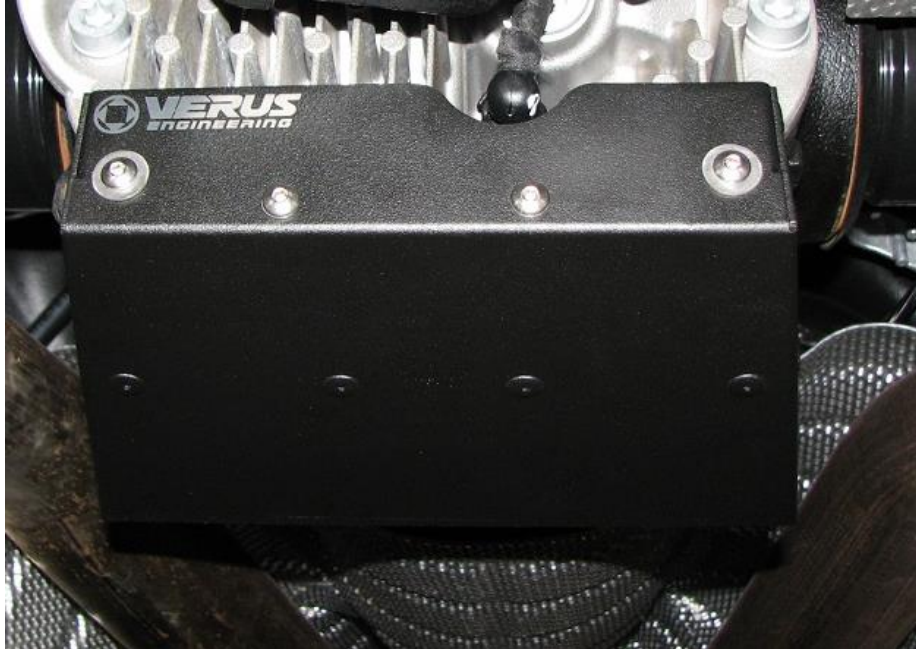
- 2.1. Verus Engineering is not responsible for damage to you or your vehicle by following this manual and/or installing Verus Engineering products.
- 2.2. We begin by gaining access to the bottom of the rear differential. You can do this by either jacking the rear of the car up or utilizing jack stands; or on a lift.
- 2.3. Below is a photo with access to the rear differential.



Confidential: Property of Verus Engineering. Not for Distribution outside intended recipient list.

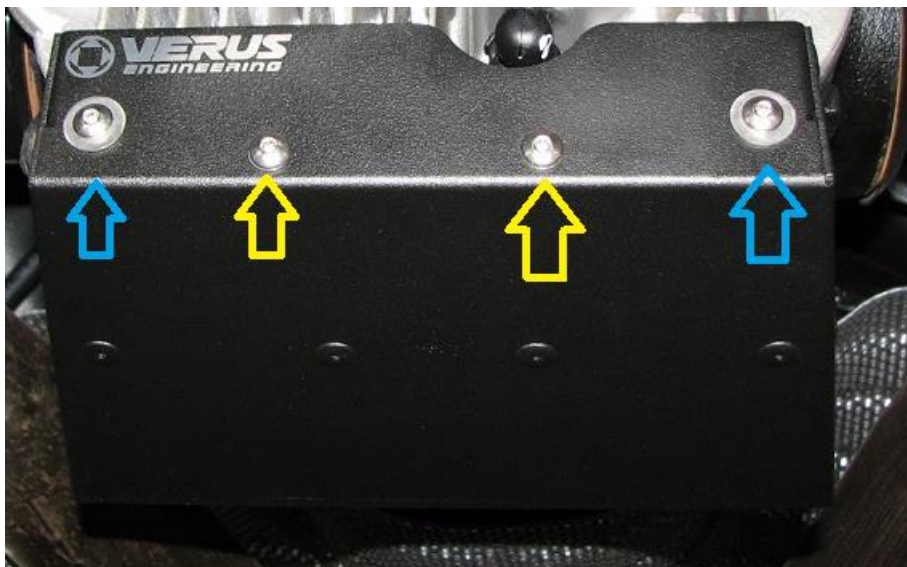
Rear Diff Cooling Plate, Toyota Supra – Install Manual

- 2.4. The neat part about this install, is that it does not require any permanent modification. Simply slide the cooling plate on the fins as shown below.



- 2.5. You will want to push this upwards, note how close the cut out for the sensor is in the above image.

- 2.6. Grabbing the (4) M5 BHCS, (2) M5 flat washers (yellow arrows), and (2) M5 fender washers (blue washers), we can install the bolts. Note the smaller washers are used on the inside locations.



Confidential: Property of Verus Engineering. Not for Distribution outside intended recipient list.

Rear Diff Cooling Plate, Toyota Supra – Install Manual

- 2.7. Grabbing the remainder of the hardware, we can install the nuts on the front side of the shield as shown below.



- 2.8. Using the allen wrench and the 8mm socket, we can tighten the (4) bolts/nuts. Torque to 60 in/lbs. Slightly past snug is good as the nylocs resist loosening over time.

- 2.9. Congratulations on installing the Verus Engineering cooling plate for the rear differential on the A90 Toyota Supra.

- 2.10. Please send any questions, comments, concerns, or photos to Verus Engineering via e-mail; sales@verus-engineering.com.

