



INSTALLATION GUIDE

**CTS-EXH-DP-0015 and CTS-EXH-DP-0015-CAT
MQB AWD DOWNPIPE or HIGH FLOW CAT**



Also applicable to CTS-EXH-DP-0015-18TSI/DP-0015-CAT-18TSI.

**20630 Mufford Crescent, Unit #309
Langley, British Columbia V2Y 2V9**

www.CTSTURBO.com

WHAT IS INCLUDED

2 Piece downpipe
1x High Flow cat /or Test pipe
1x Reducer
3x Accuseal Clamp

Recommended but not supplied:

3x Driveshaft bolts - PN: N90846102
1x Turbo Outlet gasket – PN: 5Q0253115B

TOOLS REQUIRED

6mm Allen Socket
8mm Allen Socket
10mm Triple Square bit
13mm Socket and Wrench
15mm Socket
16mm Socket
18mm Socket
O2 Sensor socket/22mm wrench
Various Extensions and ratchet
Pry-bar

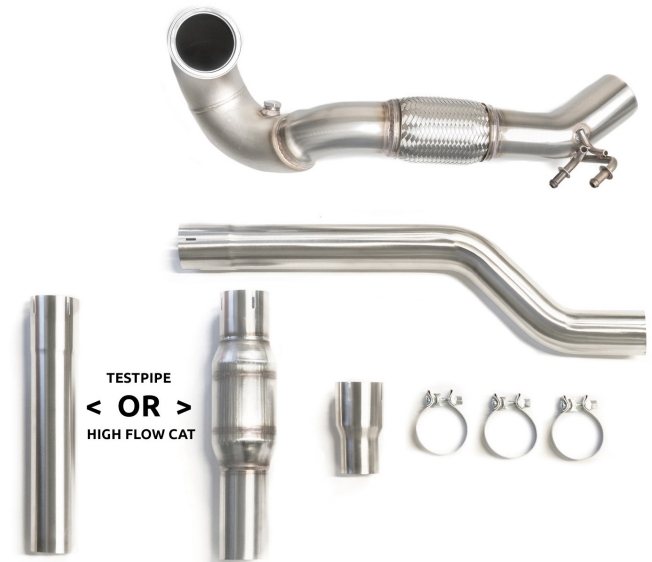
NOTES

Vehicle used in this guide is a 2019 Golf R. Instructions apply to all MQB AWD vehicles (2015-2019): VW Golf R, Sportwagen, Alltrack and Audi A3/S3/TT/TT-S Quattro.

Always make sure the car is safe to work on. Do not work on a hot motor.

Confirm you have received the High Flow Cat, or Testpipe based on your order.

We Recommend replacing the driveshaft bolts (N90846102) which will be removed during this install.

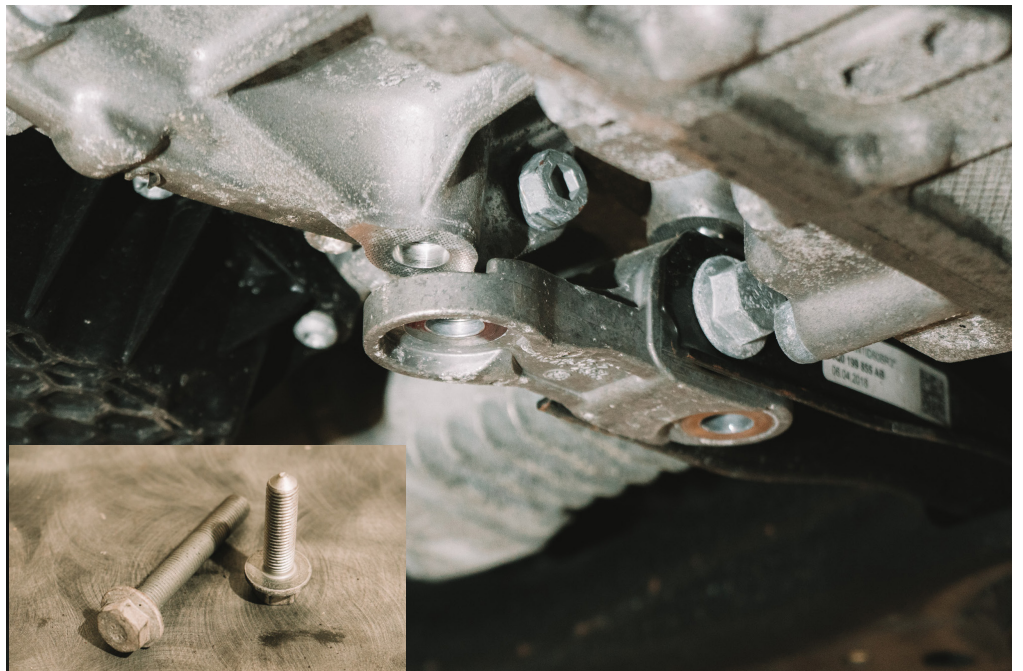
CTSTURBO

STEP 1

Unbolt the exhaust hanger from the subframe.
Disconnect the sleeve clamp from the downpipe where it meets the catback.

**STEP 2**

Remove bolts securing the dogbone mount.



STEP 3

Remove the 2x 8mm Allen barrel nuts securing the heat shield for the CV joint. Remove the heat shield.

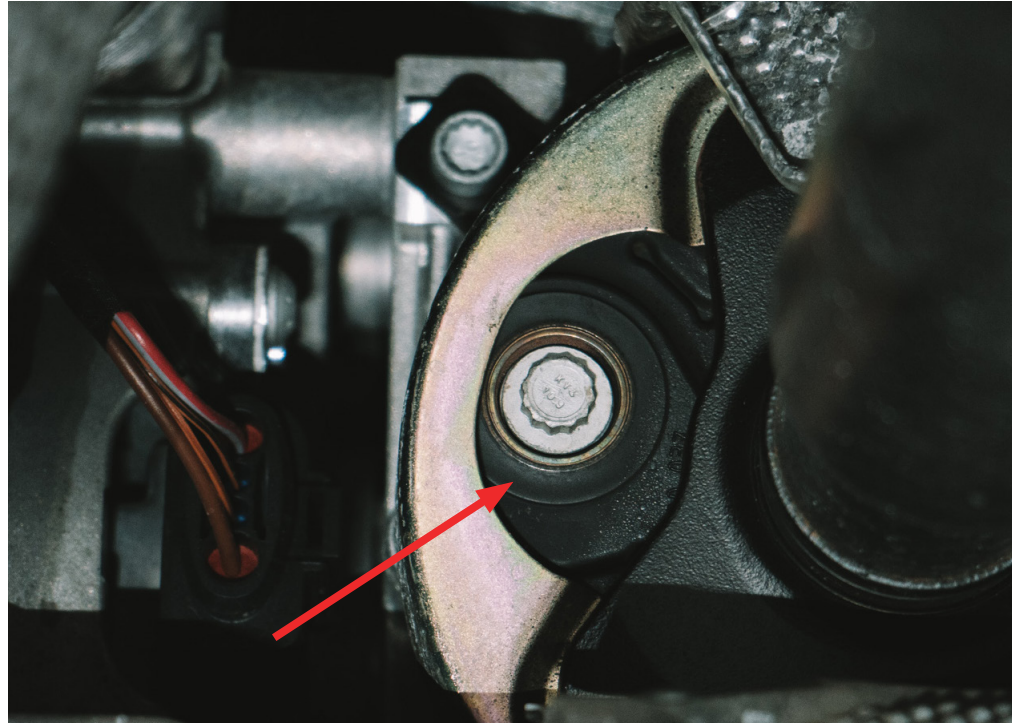
**STEP 4**

Remove the 10mm triple square and 16mm bolt holding the heat shield for the drive shaft.



STEP 5

With the vehicle raised, unbolt the 3 triple square bolts from the front of the driveshaft.

**STEP 6**

Now we will push the engine forward using a pry-bar and separate the driveshaft from the transmission. Move the driveshaft to the side.



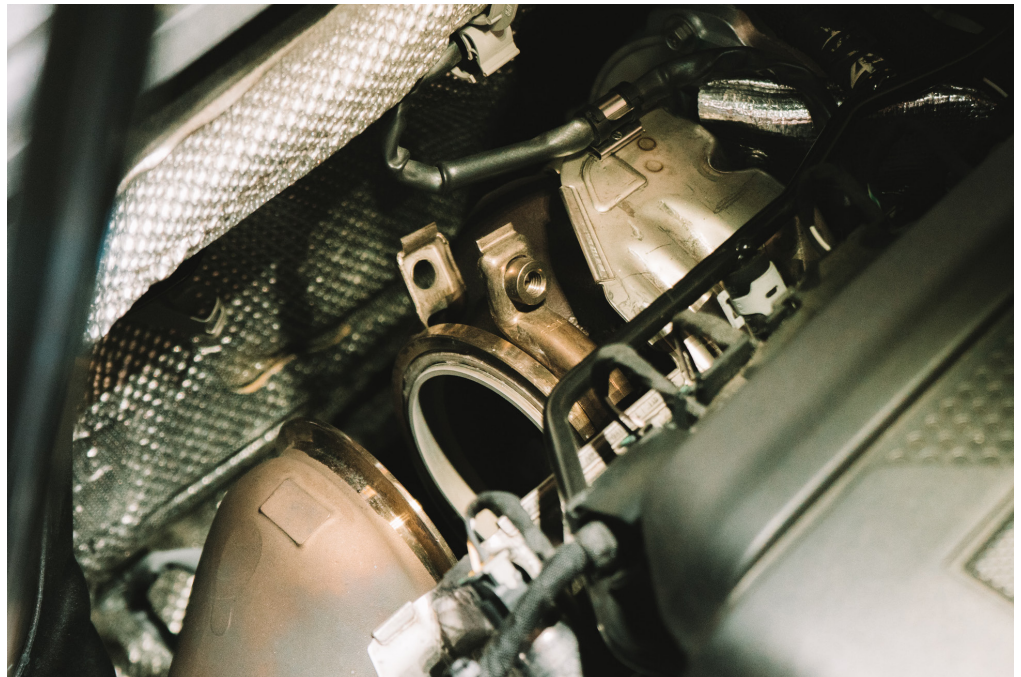
STEP 7

Remove the two 13mm nuts securing the downpipe to the downpipe support bracket (pictured)

**The driverside nut is accessible from the top, the passenger side nut is accessible from the bottom.

**STEP 8**

Unbolt the V-Band clamp from the turbo, and disconnect the O2 sensor plug from the harness.



STEP 9

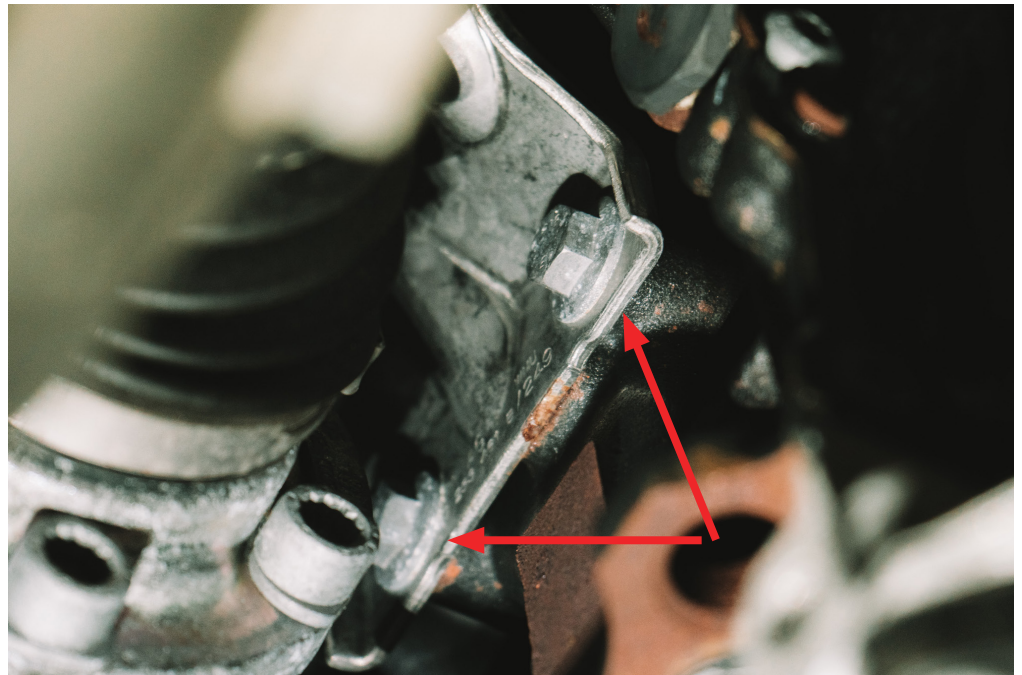
Back under the vehicle, we can now maneuver the downpipe out of the car.

It requires some finesse, but it will come out.

**STEP 10**

Remove the 2 x 13mm bolts from the downpipe support bracket where it connects to the block.

Remove this bracket.



STEP 11

Now we can remove the O2 sensor from the OEM downpipe and install it into the CTS downpipe. Don't forget to apply some anti-seize to the threads.

**STEP 12**

Install CTS downpipe onto turbo, and loosely secure the V-Band clamp.

Loosely secure the downpipe hanger to the subframe.

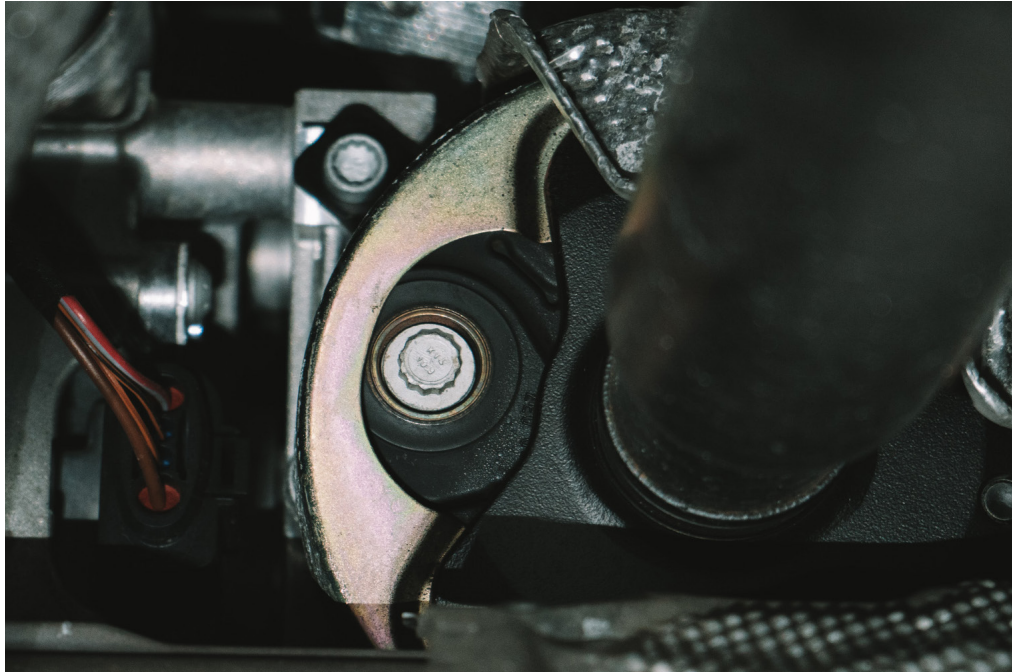


STEP 13

Re-install drive shaft into transmission.
Tighten the bolts to 50Nm
+ 90 Degrees.

NOTE: We recommend replacing these bolts with new ones. N90846102

Re-install the heat shields for the driveshaft and the CV joint.



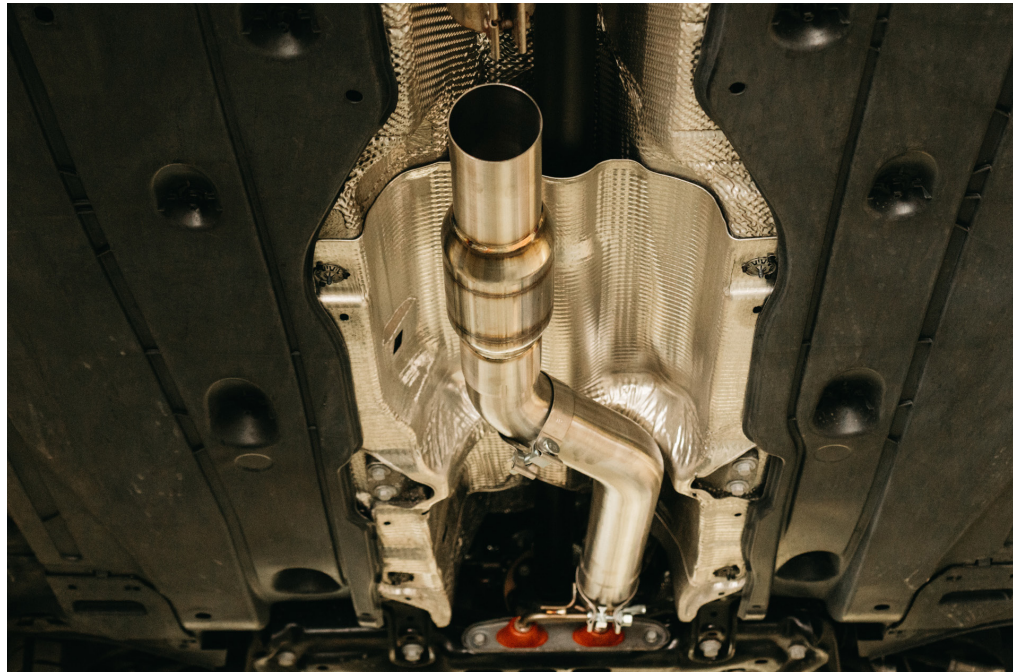
STEP 14

Re-install dogbone mount bolts.

Torque to 50Nm + 90 Degrees.

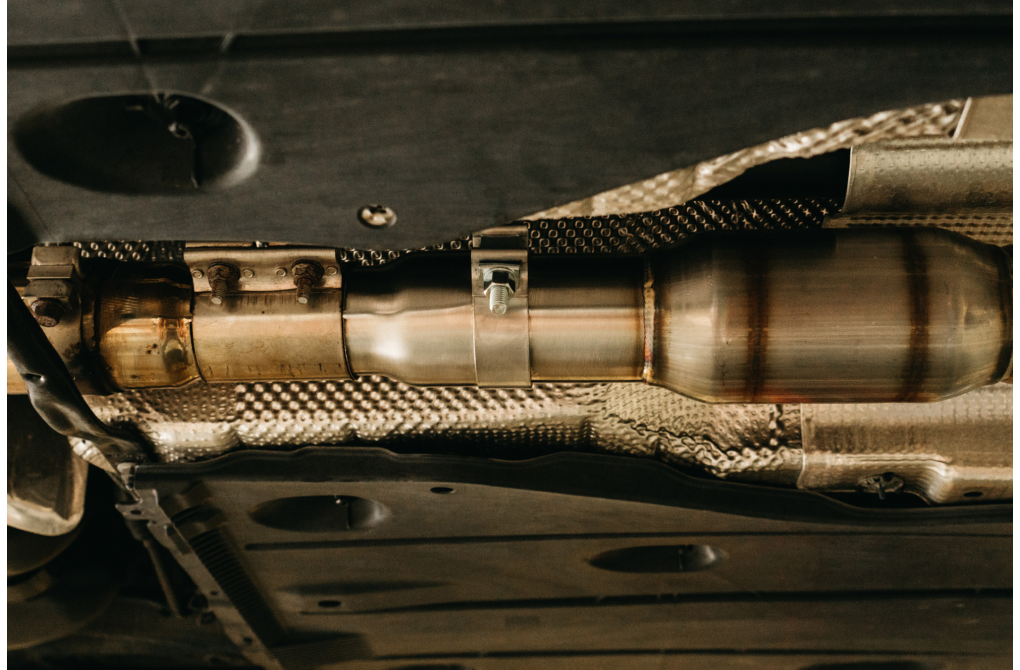
**STEP 15**

Pre-install the clamps to the mid pipe and cat (or testpipe) and mate to downpipe and catback.

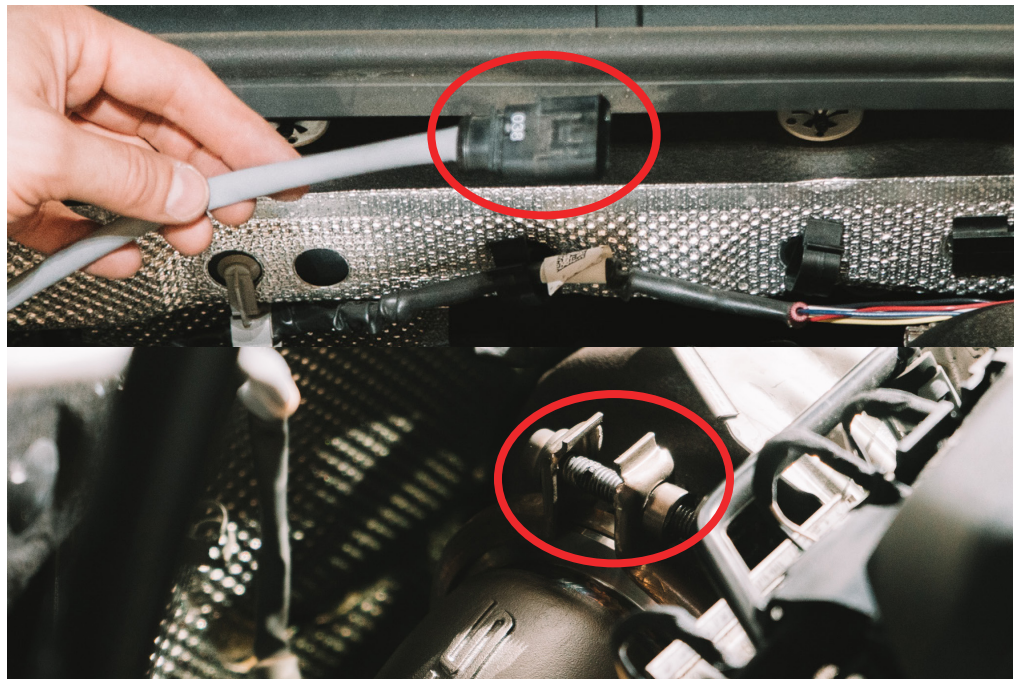


STEP 16

Adjust pipes and tighten clamps and hangers moving from the rear of the car towards the front. Before fully tightening clamps, check for clearance and adjust if necessary. Rotating the middle section of downpipe will provide room to install correctly.

**STEP 17**

Tighten V-Band clamp at Turbo/Downpipe. Plug O2 sensor back into harness.



STEP 18

You are DONE.

Enjoy more horsepower
and sound.

