

CTS TURBO

INSTALLATION GUIDE

CTS Turbo B8 A4 FMIC
CTS-B8-DF



20630 Mufford Crescent, Unit #309
Langley, British Columbia V2Y 2V9

www.CTSTURBO.com

WHAT IS INCLUDED

1. CTS Intercooler
2. Silicone hoses
3. Hardware



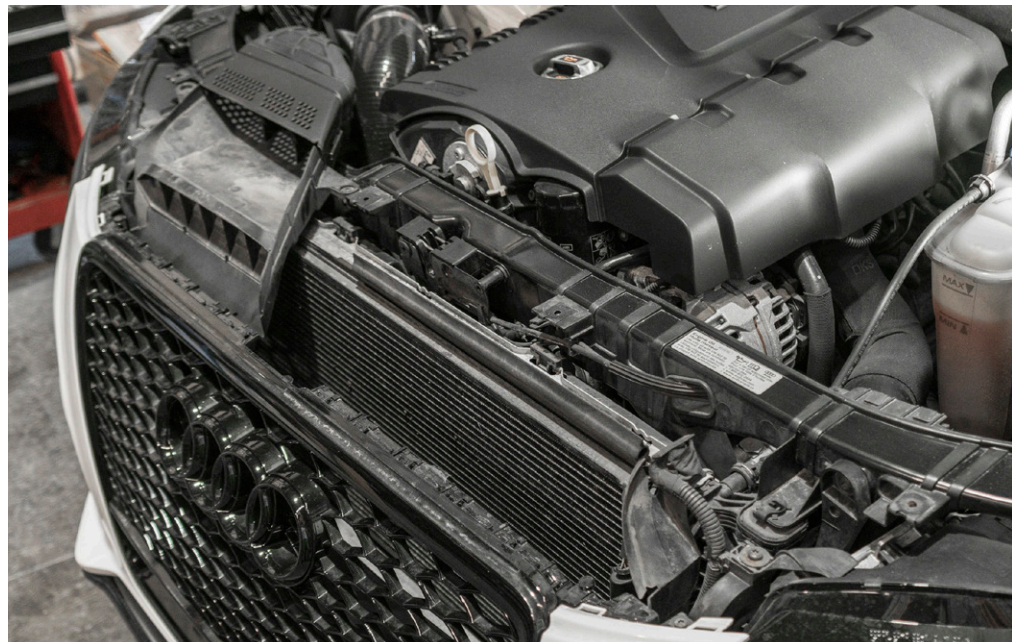
TOOLS REQUIRED

NOTES

Vehicle used in this guide is a 2011 Audi A4, Always make sure the car is safe to work on. Do not work on a hot motor. We do not accept any liability for incorrect installation or damage during the install.

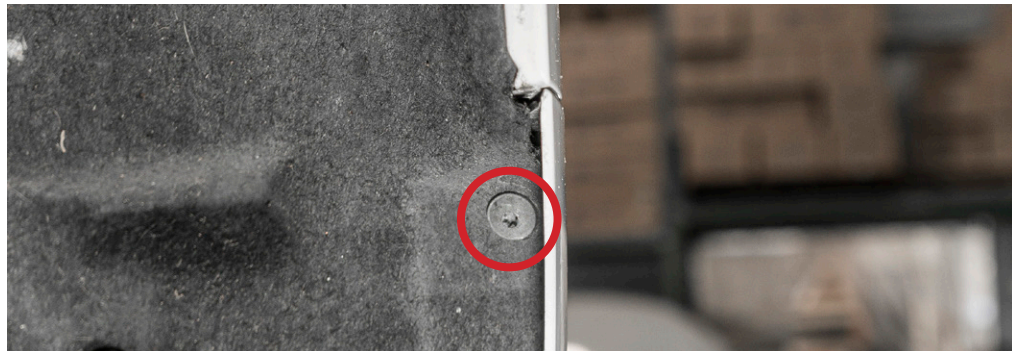
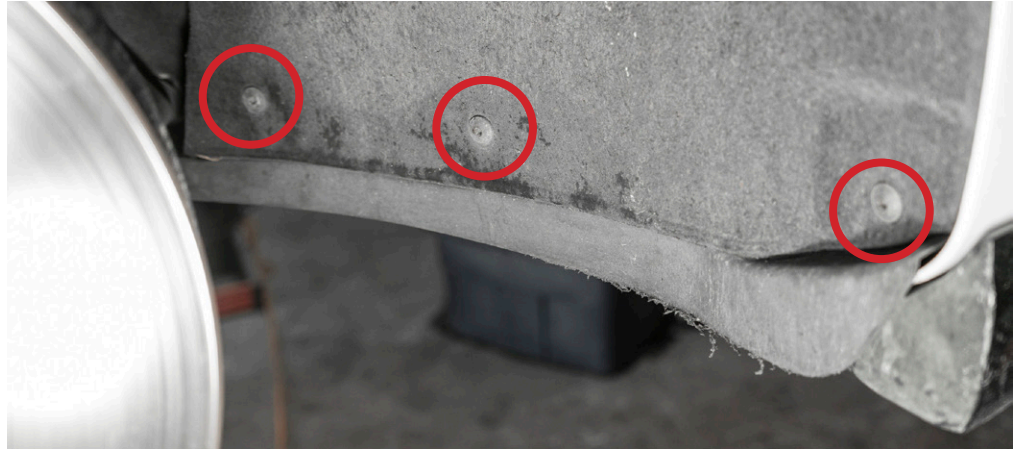
STEP 1

Remove the 4 torx screws holding the plastic bezel to the bumper and remove.



STEP 2

Remove 4 torx screws you on each wheel well.

**STEP 4**

There are electrical connections you need to disconnect on both sides of the vehicle.



STEP 4 continued



STEP 5

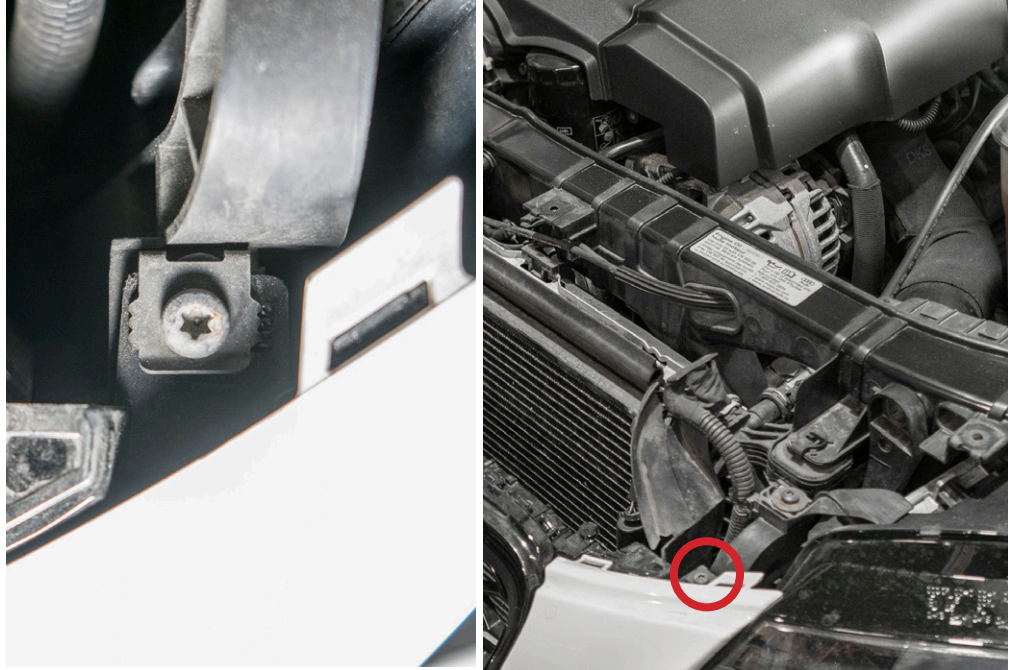
There is a plastic tab holding the a wiring harness to the bumper on passenger side.

Unclip it from the mounting point on the bumper.



STEP 5

Remove the trox bolt holding the bumper to the chassis on the drivers side.



STEP 8

On the inside of the bumper on both sides there is a 10mm bolt you need to remove.

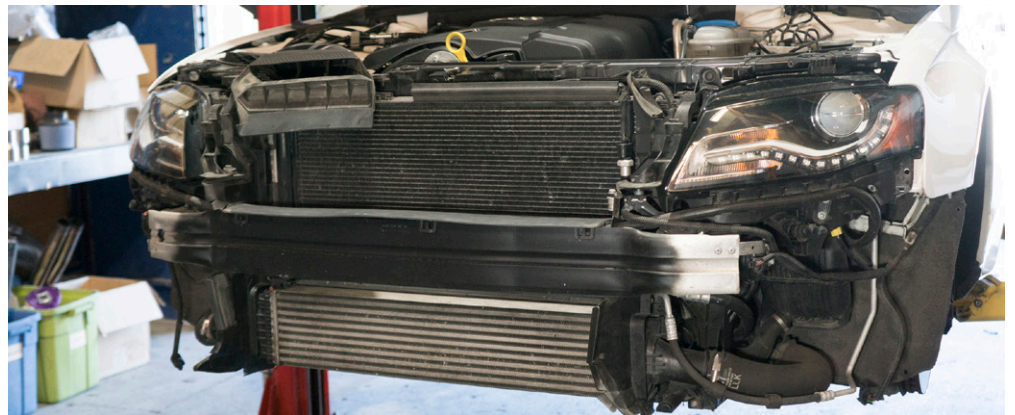
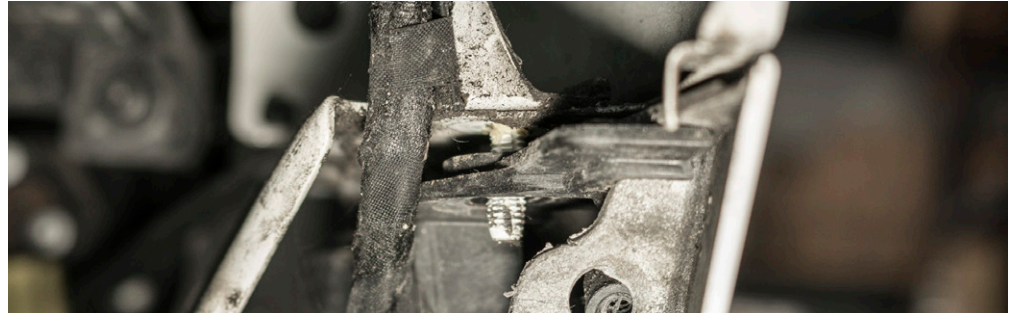
You will now be ready to remove the bumper.



STEP 9

Remove the bumper.

We recommend you have a 2nd person to help with removal.

**STEP 10**

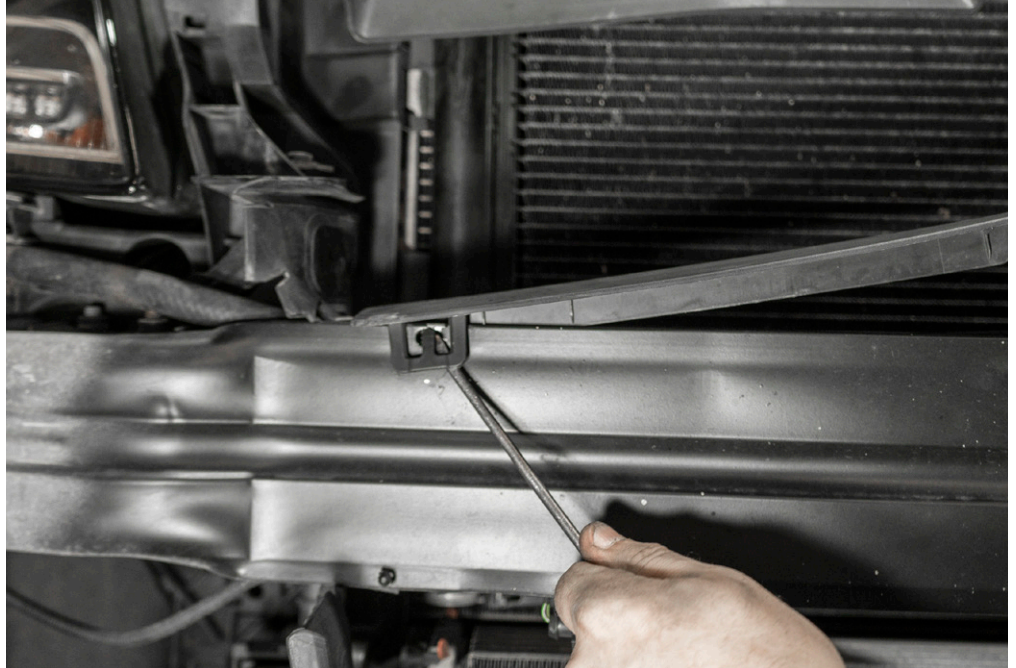
Disconnect the air temperature sensor attached to the crash bar.



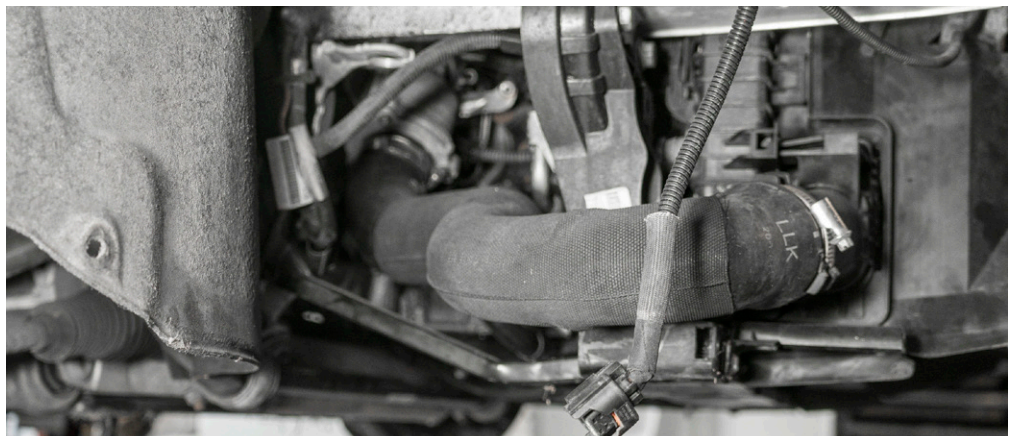
STEP 11

Remove the plastic trim attached to the crash bar.

Using a screw driver or pry tool carefully push the tabs outward to remove.

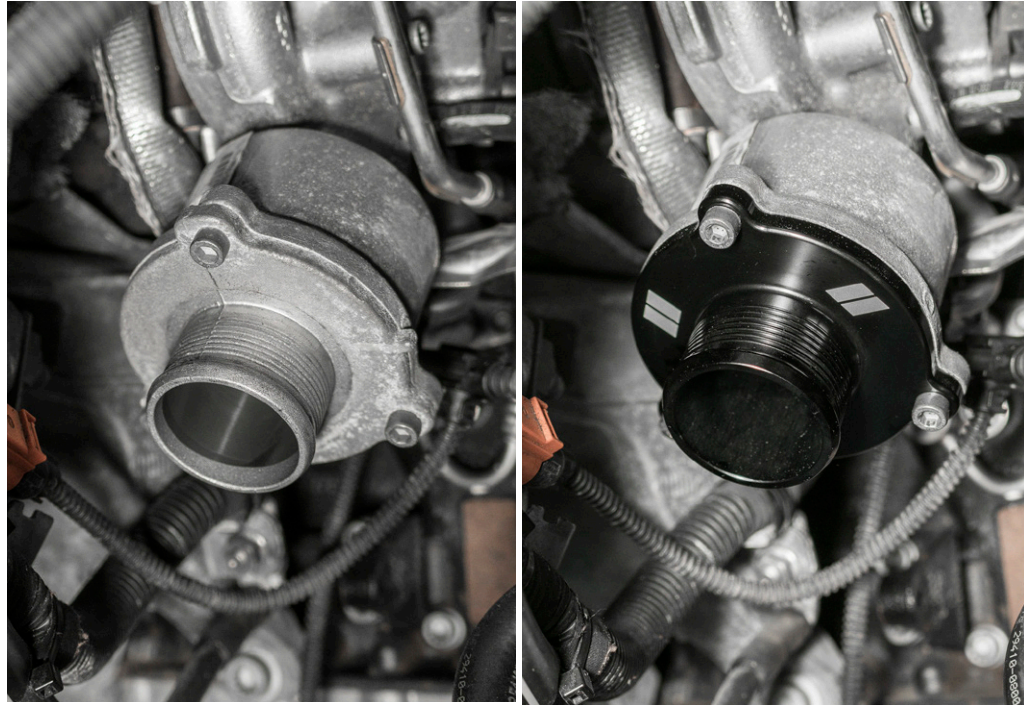
**STEP 12**

Disconnect the intercooler hoses from outlet and inlet.



STEP 13

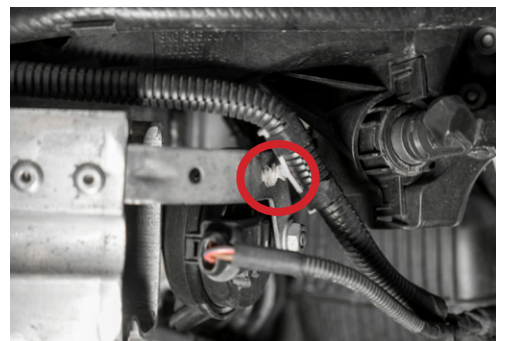
At this time we will install the CTS turbo muffler delete.



STEP 14

Loosen the bolts holding the crash bar to the chassis.

Also, detach the wiring harness from the crash bar indicated.



STEP 15

Remove the crash bar.



STEP 16

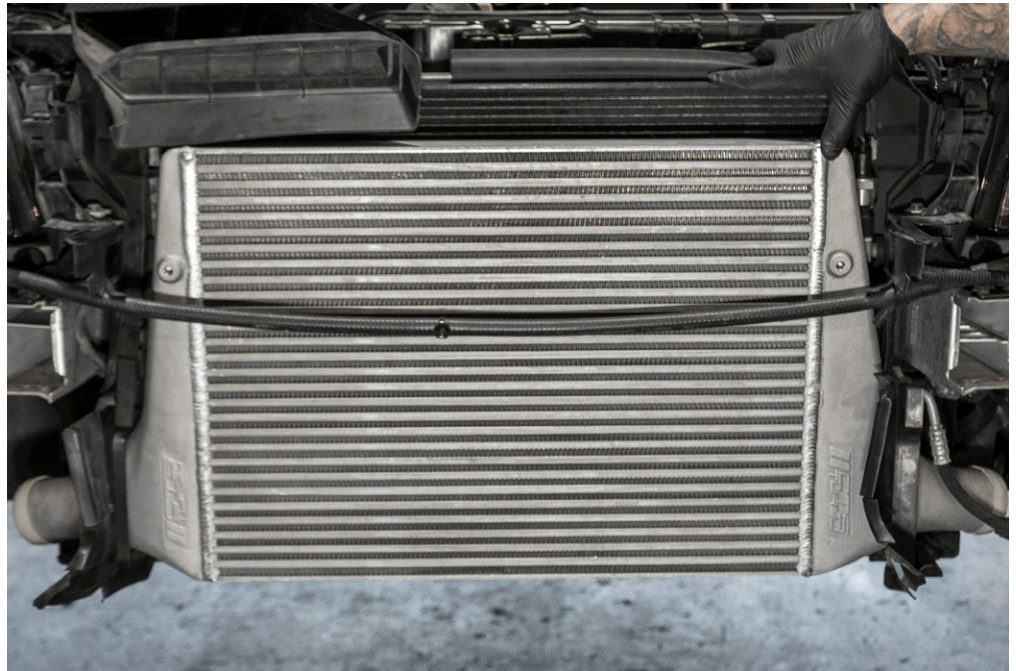
Remove the intercooler.



STEP 17

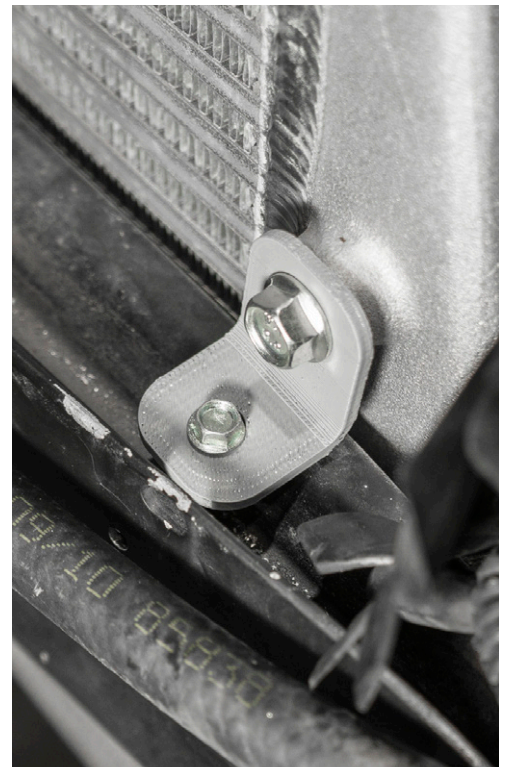
Install the CTS intercooler.

Reinstall the crash bar.



STEP 18

You will need to mark and drill a 1/8 pilot hole to attach the provided brackets.



STEP 18 Continued



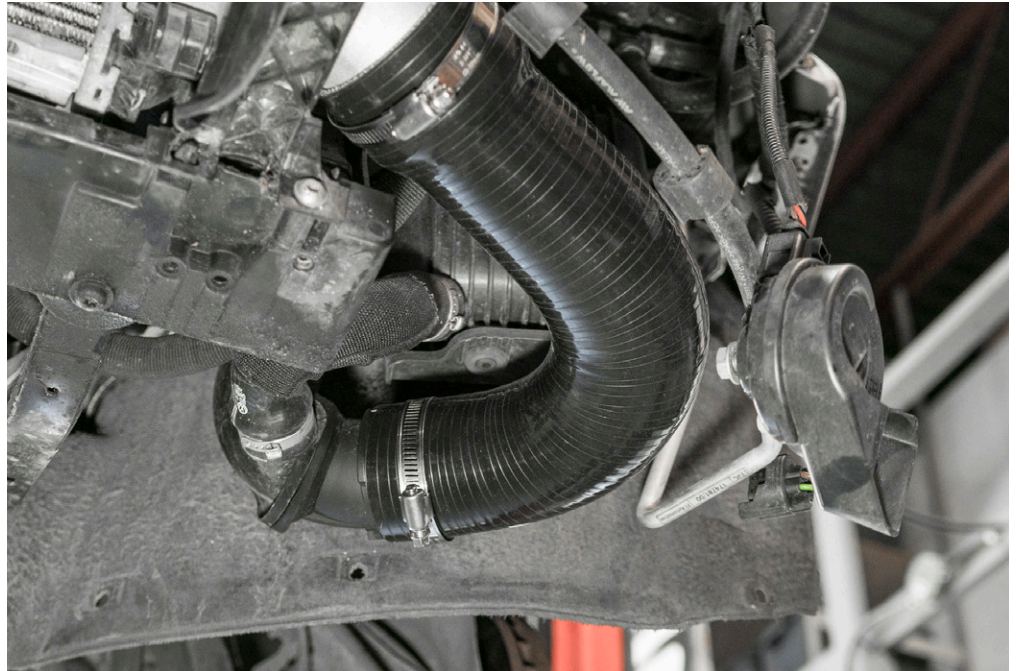
STEP 16

Install the outlet hose.



STEP 15

Install the inlet hose.



STEP 16

Reinstall back from step 11.

You are done!

