

CTSTURBO

INSTALLATION GUIDE

Air Intake Kit
CTS-IT-220R



20630 Mufford Crescent, Unit #309
Langley, British Columbia V2Y 2V9

www.CTSTURBO.com

WHAT IS INCLUDED

1. CTS high flow air filter
2. Intake pipes
3. Hardware
5. Heat shield with weather stripping

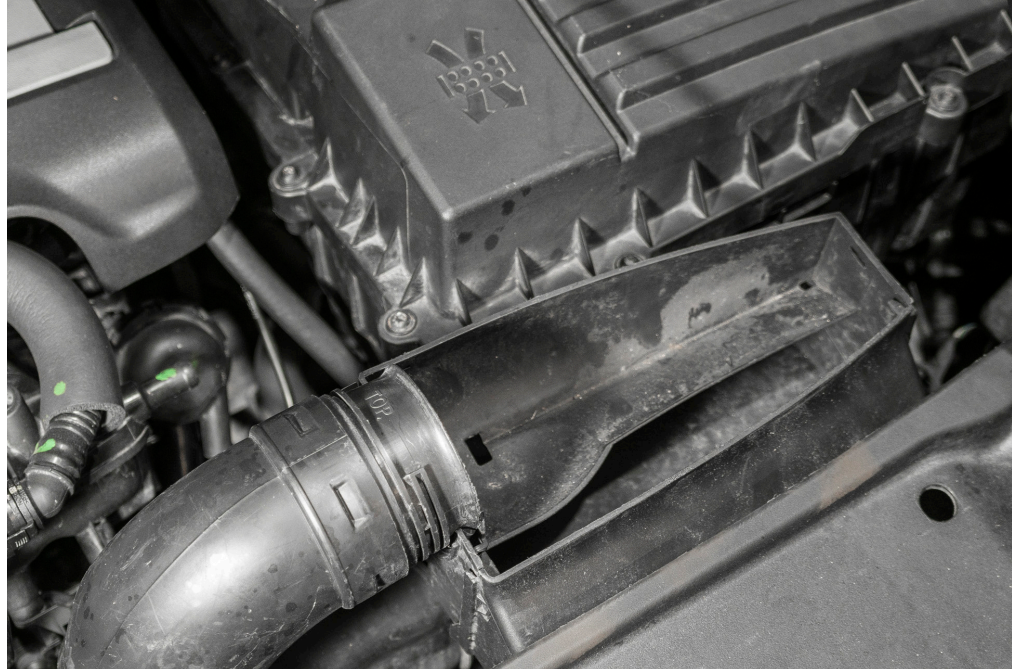


NOTES

Vehicle used in this guide is a MK6 Jetta GLI. Always make sure the car is safe to work on. Do not work on a hot motor. We do not accept any liability for incorrect installation or damage during the install.

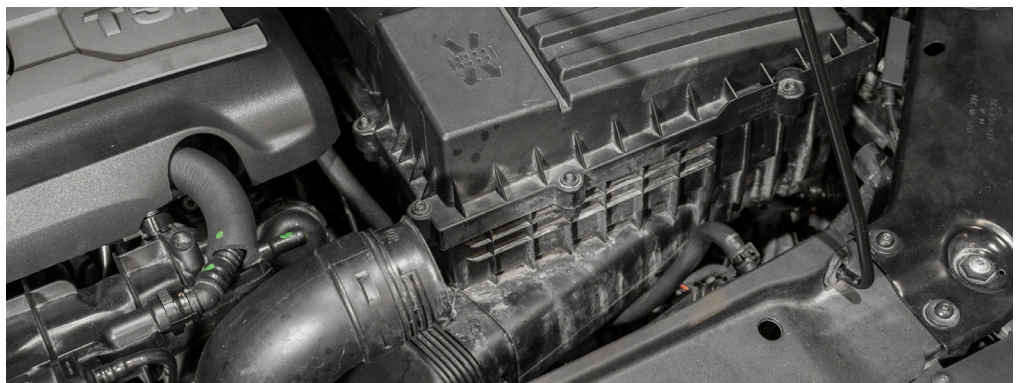
STEP 1

Remove the front air dam cover.



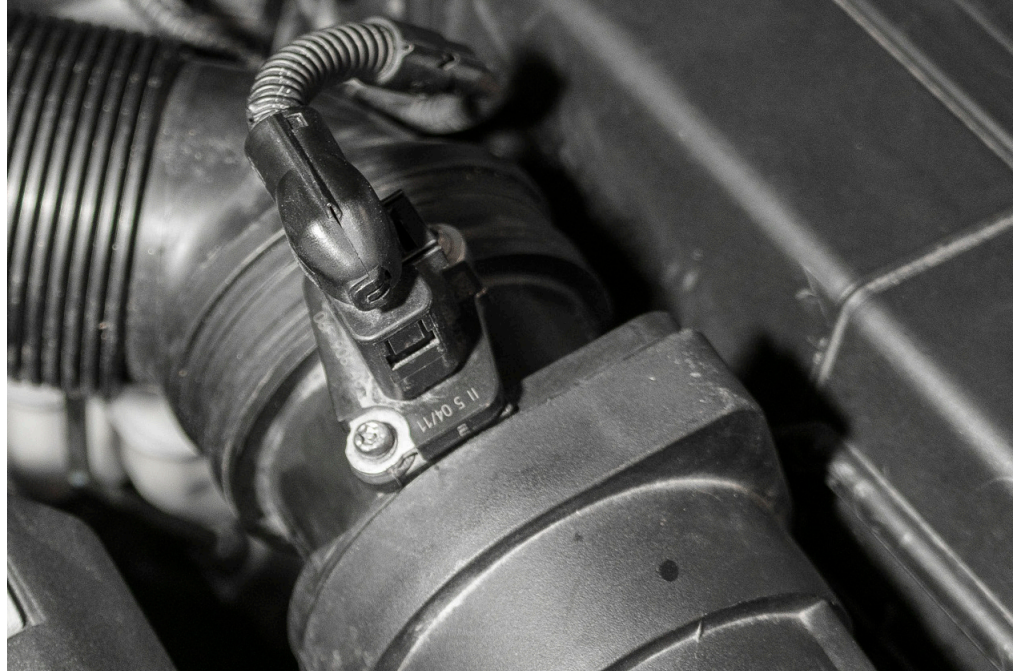
STEP 2

Use a T25 torx to remove the front air inlet



STEP 3

Disconnect the MAF Sensor.

**STEP 4**

Use a pipe clamp removal tool to release the OEM plastic intake pipe from the MAF housing.



STEP 5

Remove the stock air box



STEP 6

On the rear pipe, unbolt the stock mounting location.



STEP 7

Loosen the lower clamp on the turbo inlet

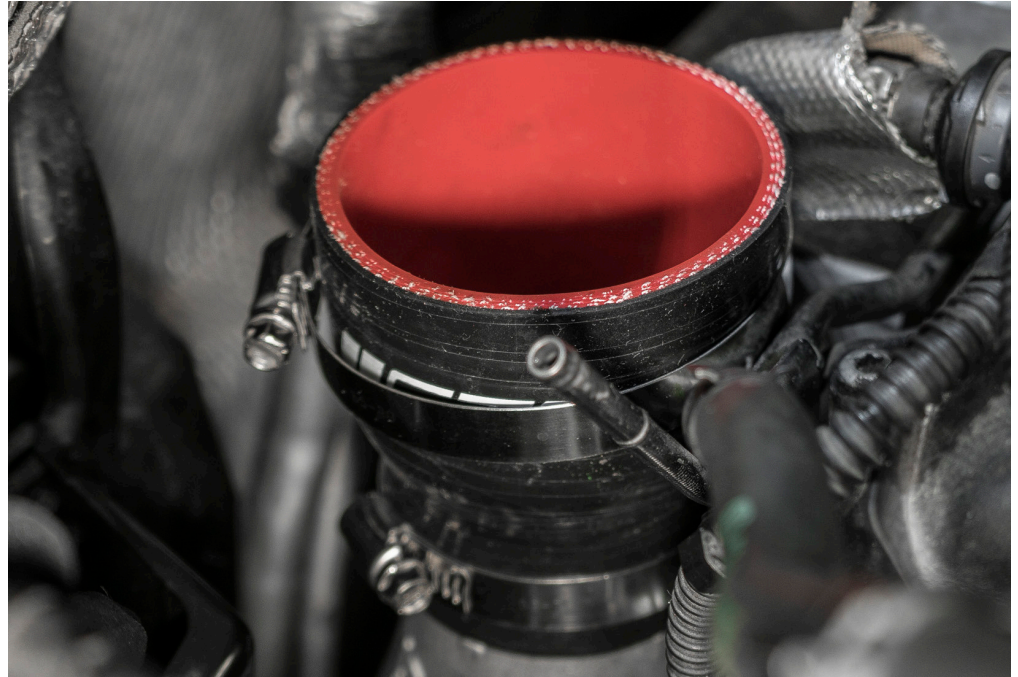
**STEP 8**

Unclip the rear breather tube, remove the factory intake and remove the OEM rubber connector from the turbo inlet.



STEP 9

Place the silicone over the turbo inlet and tighten the lower clamp.



STEP 10

Install the 2 bungs into the inlet pipe.

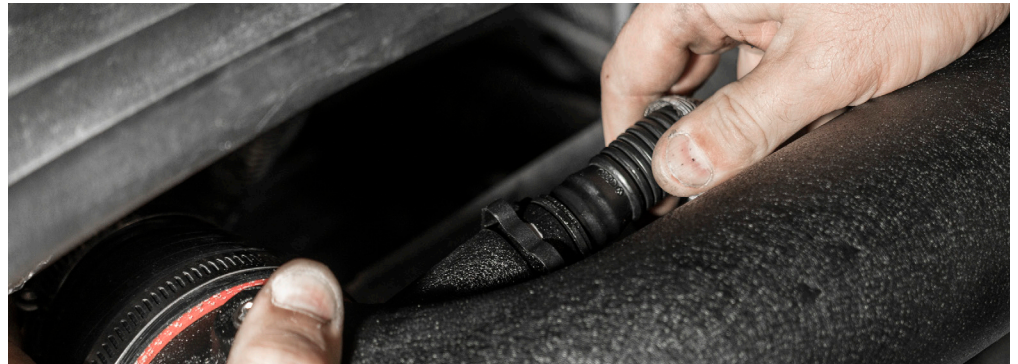
*Do not over tighten them.



STEP 11

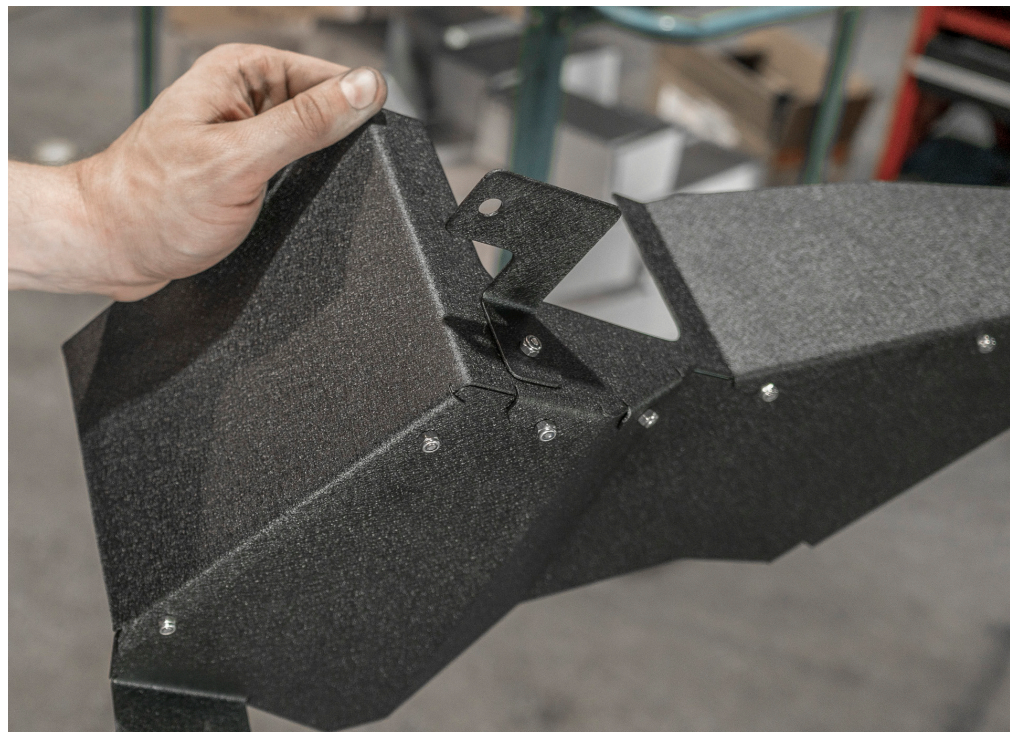
Reinstall the rear breather tube and inlet pipe.

You can tighten the upper clamp on the inlet at this point.



STEP 12

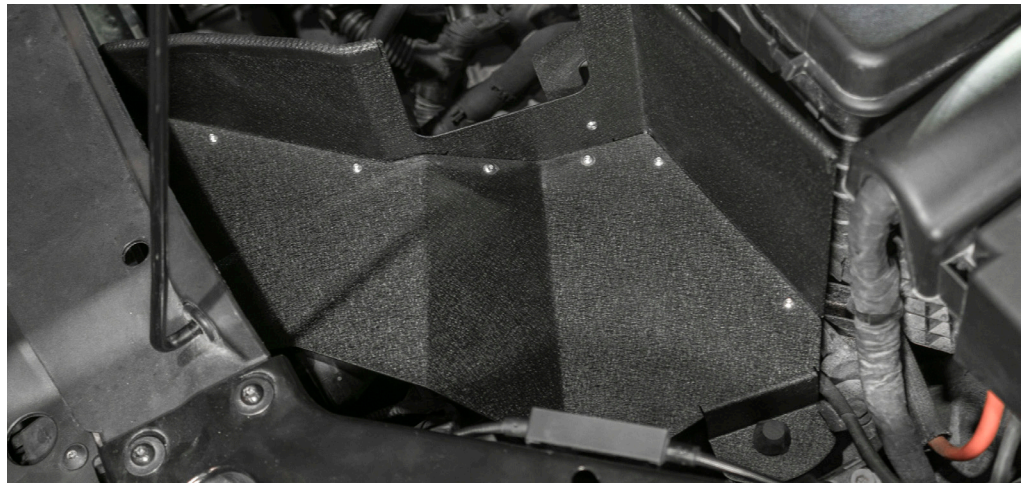
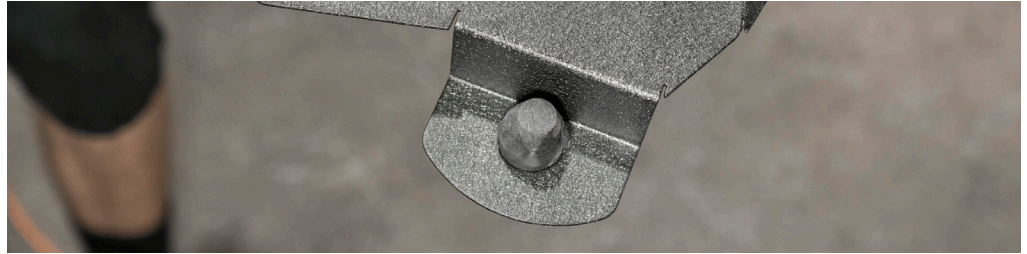
Assemble the heat shield and bracket.



STEP 13

Insert the rubber grommet into the heat shield.

Install the heat shield and weather stripping.

**STEP 14**

Using the T25 torx use the OEM screw to attach the heat shield



STEP 15

Install the MAF and silicone couplers.



STEP 14

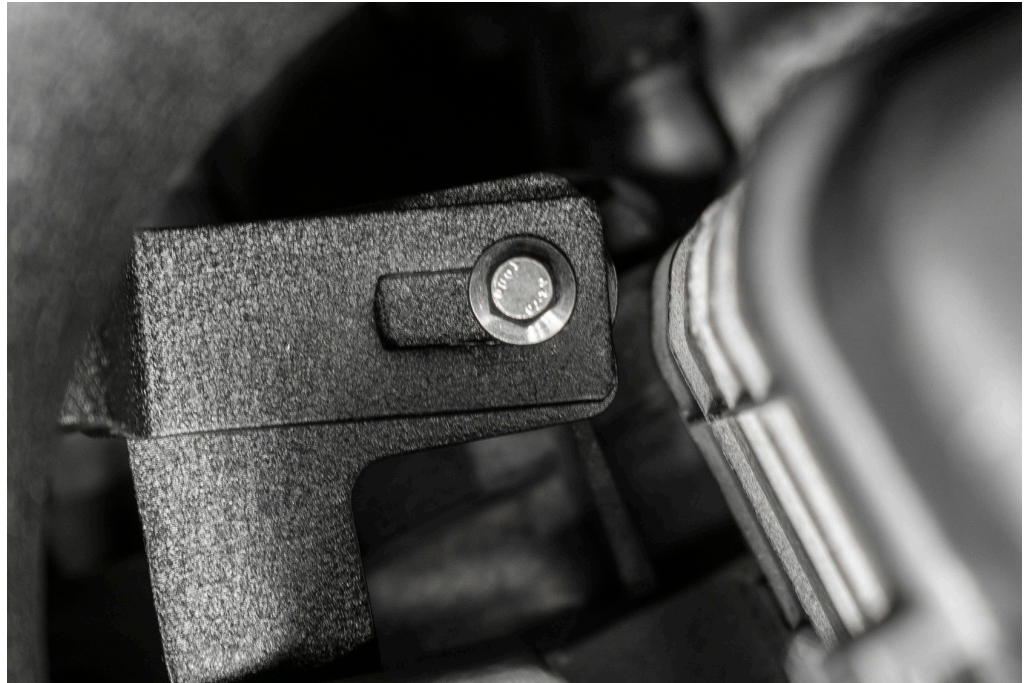
Attach the filter and inlet pipe to the silicone coupler.

Reconnect the MAF sensor



STEP 15

With the provided bolt install to bolt brackets together.



STEP 15

Check all the clamps are tight and you are done!

