



**REFERENCE GUIDE  
CTS-HW-0345**



20630 Mufford Crescent, Unit #309  
Langley, British Columbia V2Y 2V9  
[www.CTSTURBO.com](http://www.CTSTURBO.com)



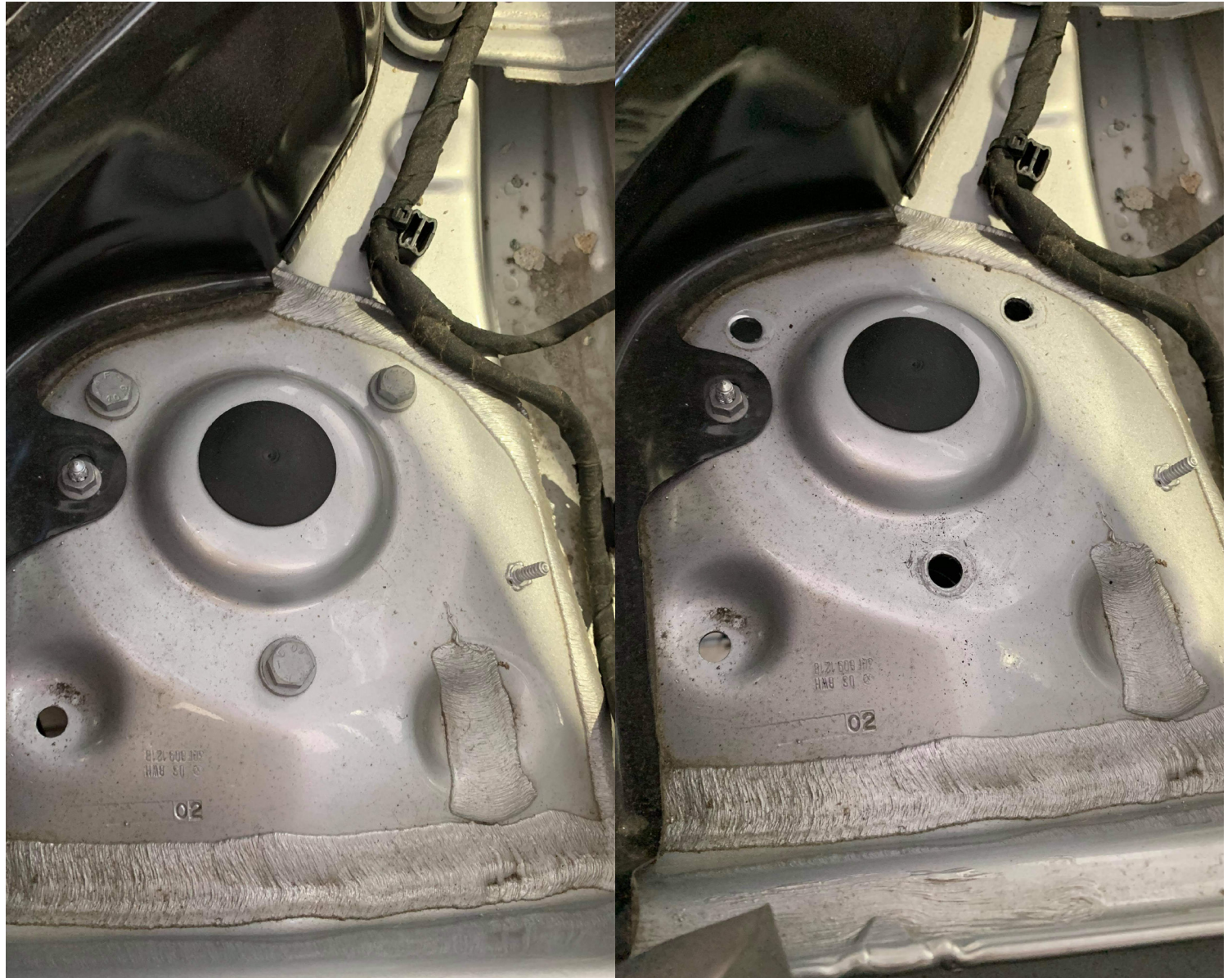
**NOTES**

INSTALLATION PERFORMED ON VW ATLAS. OTHER MODELS WILL BE SIMILAR.

### STEP 1



**STEP 2**



**STEP 3**



**STEP 4**



**STEP 5**



**STEP 6**





**STEP 7**



**STEP 8**

