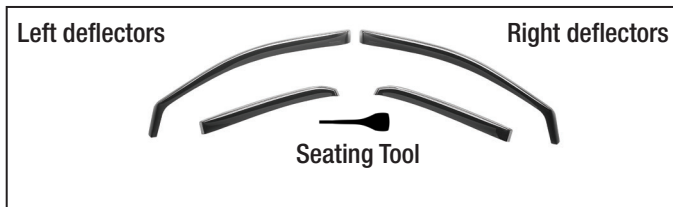


WeatherTech®

Side Window Deflectors

Installation Instructions

Contents



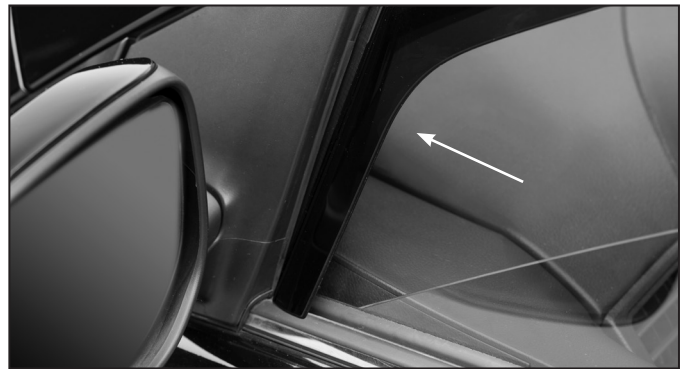
(2 or 4) Side Window Deflectors and (1) Seating Tool included. If there is a WeatherTech® label, it should be positioned toward the rear of the vehicle.

⚠ WARNING

Accessories which are not properly fitted can be dangerous. Read the instructions carefully before installation, and comply with the instructions at all times. If in doubt, contact WeatherTech®.



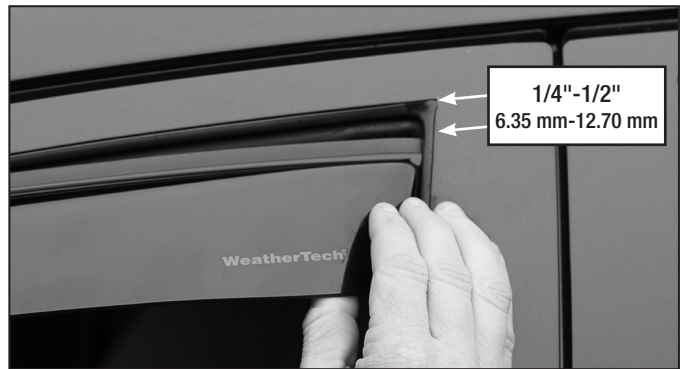
1 Make sure windows are clean and dry. Then, lower windows halfway.



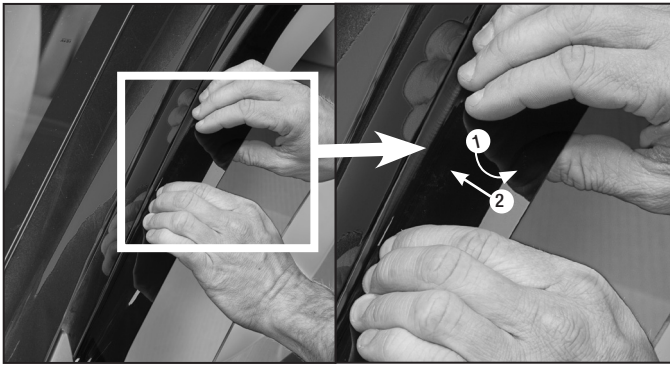
2 Slide forward, into window channel. Ensure edge rests on top of the outer window sill!



3 Bow the deflector outward.



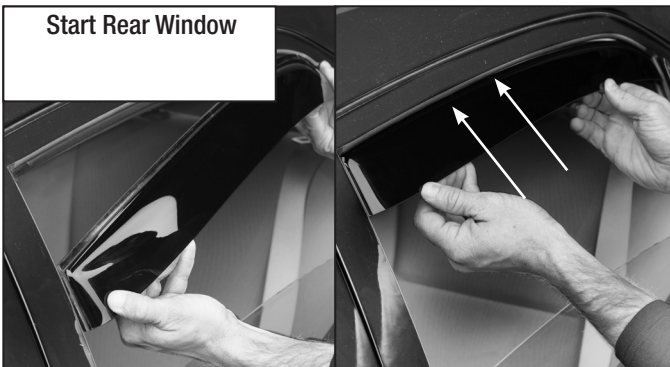
4 Insert rear edge leaving a gap at the top.



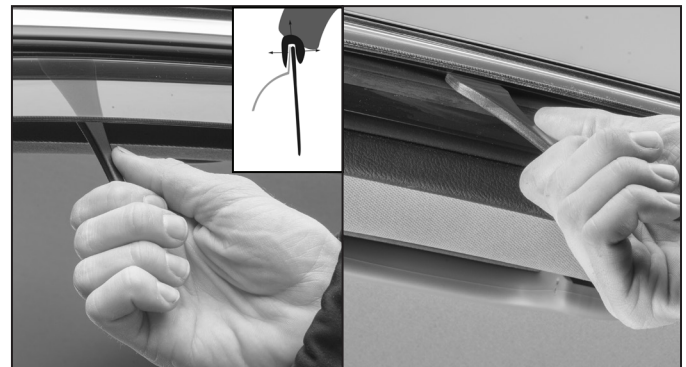
5 Pull down and tuck in working from front to back.



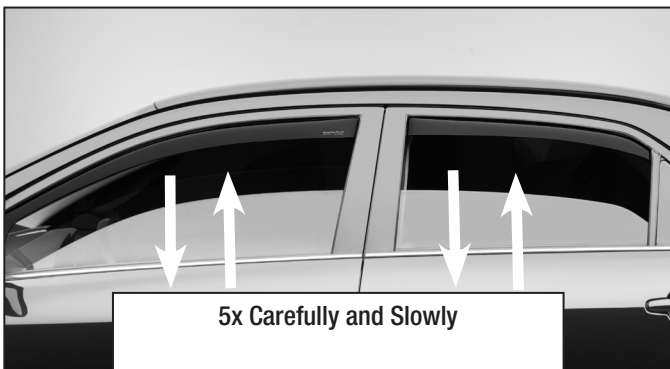
6 Carefully pull outward on the deflector.



7 Be sure to remove adhesive backing before installation (if supplied). Slide upward into place, then gently pull outward to set the deflector.



8 Carefully run seating tool between deflector and window seal to seal the deflector.



9 Roll all windows up in small increments. Make sure to do this CAREFULLY and SLOWLY!!

Congratulations!

Your new WeatherTech® Side Window Deflectors have been installed!

Installation Tips

1. When installed correctly, the bottom edge of the front deflector must rest on the door's outer weather-strip molding and only the thin flange is in the channel between the glass and inner seal.
2. Slowly raise the window up without activating the auto-up. If unable to fully close, have someone press the window between their hands upwards. Simultaneously raise the window up in small increments until fully closed.
3. If safety features cause the window to go down, reset the window by:
 - a. Roll the window down, hold the down button for 5 seconds.
 - b. Raise the window without activating the auto-up feature. Hold the up button for 3 seconds.
4. Leave windows closed fully for 12 hours. Deflector may take longer to acclimate below 60° F / 16° C.