

2020+ Subaru Outback Mud Flap Installation Instruction

View instructions and photos online www.rallyarmor.com

CARE AFTER INSTALLATION Once installed, the vehicle owner is responsible for the condition of the mud flaps and all costs associated with replacing damaged or lost parts. Warranty covers manufacturer defect on new, never installed parts.

⚠ Watch for blind spots when parking ⚠ Avoid contact with curbs, bumps and objects that can compress the flaps with excessive force. Be sure to check wheel clearances, especially on vehicles equipped with aftermarket wheels and suspensions.

QUESTION ON INSTALLATION? CONTACT US ONLINE www.rallyarmor.com/support

NEED TO PURCHASE REPLACEMENT PARTS? SEND RECEIPT OR PHOTO OF RALLY ARMOR LOGO ON FLAPS TO US www.rallyarmor.com/support

IMPORTANT NOTES


 ALWAYS TEST COMPATIBILITY
 WITH YOUR SPECIFIC WHEEL,
 TIRE AND SUSPENSION
 COMBINATION



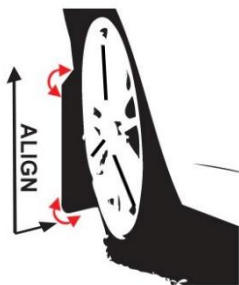

 ALWAYS USE
 CAUTION DURING
 PARKING/REVERSAL
 SCENARIOS




 CLEANING INSTRUCTIONS:
 USE WATER AND SOFT CLOTH
 TO CLEAN FLAPS. AVOID
 SOLVENT BASED CLEANERS




 ALWAYS ALIGN YOUR MUD
 FLAP PERPENDICULAR TO
 GROUND PRIOR TO TIGHTENING



INSTALLATION KIT CONTENTS

QUANTITY	PART	ITEM ID
4	LOCK NUT	SSLNUT
4	LONG SCREW	1.5SS
2	MACHINE SCREW	1MCHSS
2	SHORT SCREW	1SS
6	THIN SCREW	1SS#8
14	WASHER	SMWASH
2	INSERT	INS5
2	SPACER	.25SP
4	POLYGON CLIP	POLCLP
6	ORANGE CLIP	ORCLP
2	REAR MOUNTING BRACKET	BMF43-RE
2	STICKER	ST-MF43

SSLNUT
LOCK NUT



BMF43-RE
REAR BRACKET



1.5SS
LONG SCREW



ST-MF43
STICKER



1SS
SCREW



.25SP
SPACER



1SS#8
THIN SCREW



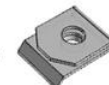
INS5
INSERT



1MCHSS
MACHINE
SCREW



POLCLP
POLYGON CLIP



SMWASH
WASHER



ORCLP
ORANGE CLIP



Recommended Tools Low-profile offset or ratcheting screw driver, 7/16th wrench, flathead screwdriver.

Important Tips Installation should be done on an even surface. Do not use power tools to tighten hardware. Hand tools only. Avoid overtightening.

RALLY ARMOR - A BIT ABOUT OUR STANDARD IN MUD FLAPS

Rally Armor mud flaps are fabricated from a high grade polyurethane plastic that is rigorously reviewed for quality and consistency. As with all manufacturing processes, controlled conditions and multiple QC checkpoints minimize major irregularities, however certain very minor surface layer marks appear periodically. These are visual variations that do not affect construction nor do they impede the performance of the flaps. Most matte away as the material ages naturally with continued exposure to the outdoors. Each flap is unique in appearance yet all are equally structurally sound.

2020+ Subaru Outback Mud Flap Installation Instruction

FRONT MUD FLAP

Bracket & Hardware 1 x Front Flap → 2 x 1.5SS; 1 x 1SS; 1 x .25SP; 1 x INS5; 3 x SMWASH; 2 x POLCLP

Turn the steering wheel towards the side you are working on to gain access to the inner wheel well area.

FIGURE A Remove factory fasteners 1-4. Coax liner away from the fender.

FIGURE B Install POLYGON CLIP POLCLP over upper and lower fender mounting points.

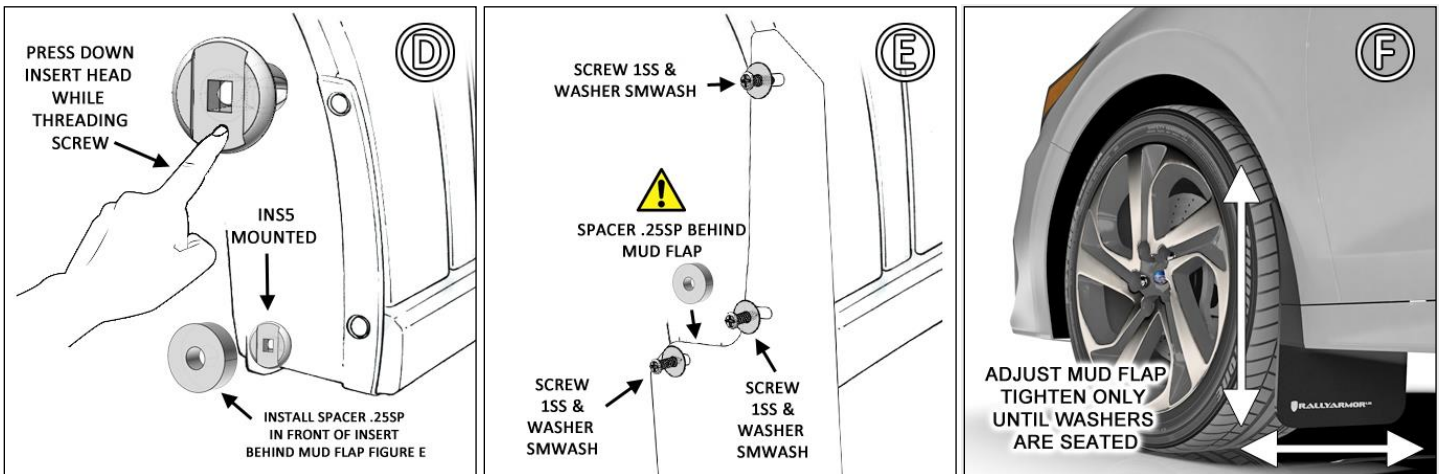
FIGURE C Replace liner. Remove inner fastener from INSERT INS5 then install flush inside inner mounting point. Replace original upper liner fastener.



FIGURE D Noting placement of INSERT INS5, SPACER.25SP installs in front of INS5, behind mud flap. Use finger to press INSERT head down to prevent spinning while expanding its base.

FIGURE E Logo-side of flap faces rear of vehicle against the corresponding mounting points. Install two LONG SCREW 1.5SS with WASHER SMWASH into respective outer mounting points. Innermost mount utilizes SHORT SCREW 1SS and SPACER .25SP BEHIND mud flap. Firmly depress INSERT INS5 to prevent spinning. **Do not tighten completely.**

FIGURE F Ensure mud flap is parallel to even ground. Hand tighten only until washers seated against flap. **Adjust as needed.**



2020+ Subaru Outback Mud Flap Installation Instruction

REAR MUD FLAP

Bracket & Hardware 1 x Rear Flap → 1 x BMF43-RE; 1 x 1MCHSS; 3 x 1SS#8; 3 X ORCLP; 4 x SMWASH; 2 X SSLNUT; 1 x ST-MF43

FIGURE G Clean then adhere STICKER ST-MF43 against the REAR BRACKET BMF43-RE.

FIGURE H Remove factory fasteners 1 and 2.

FIGURE I Mount BRACKET BMF43-RE to lower liner using MACHINE SCREW 1MCHSS and LOCK NUT SSLNUT, stud on bracket facing front of vehicle.

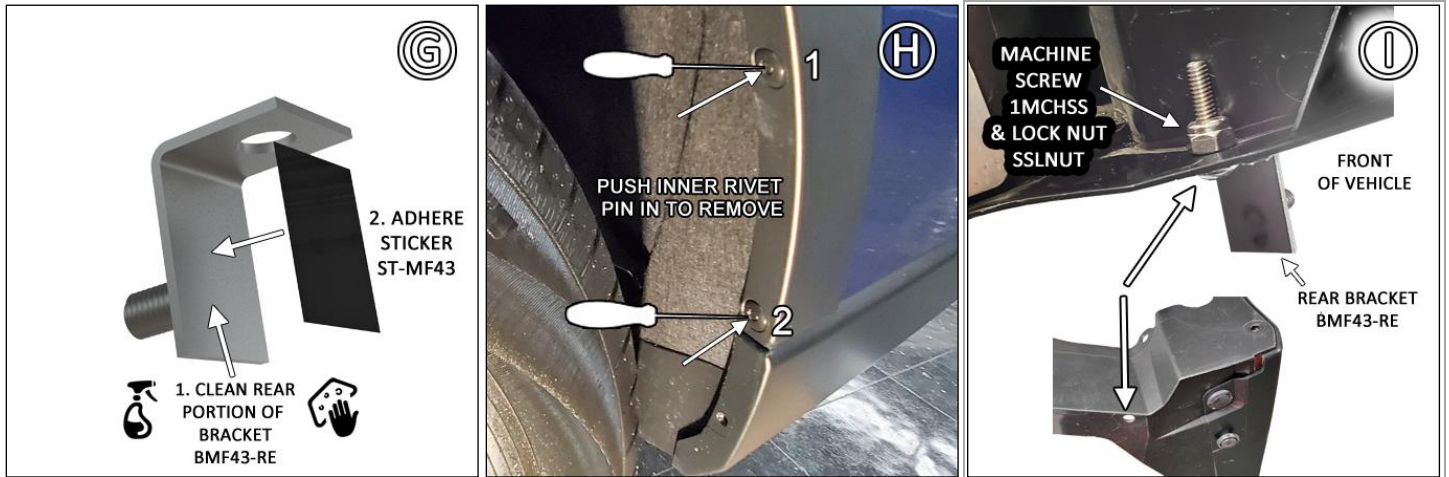
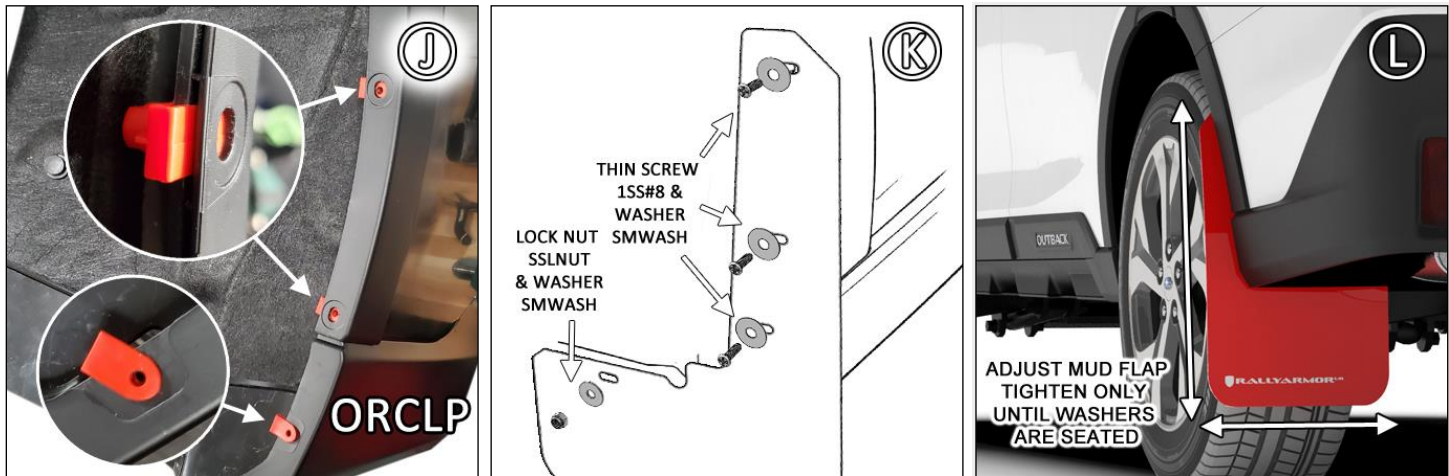


FIGURE J Install three ORANGE CLIP ORCLP to bumper mounting points. Upper two clips mount **behind** flare, lower clip **over** flare.

FIGURE K Logo-side of flap faces rear of vehicle against the corresponding mounting points. Install three THIN SCREW 1SS#8 with WASHER SMWASH onto respective mounting points. Inner mount utilizes LOCK NUT and WASHER. **Do not tighten completely.**

FIGURE L Ensure mud flap is parallel to even ground. Hand tighten only until washers seated against flap. **Adjust as needed**



IMF66



2020+ Subaru Outback Mud Flap Installation Instruction

FRONT REAR MF66 MOUNTING DIAGRAM

