



BMS Audi S4 BETA Install Guide

Applications

Audi B9 S4 3.0TFSI

Audi B9 S5 3.0TFSI

Audi B9 MK2 SQ5 3.0TFSI

Audi B9 RS4

Audi B9 RS5

Audi A6/7 3.0TFSI/55

Audi Q8 3.0TFSI/55

Porsche Macan S Facelift

Porsche E3 Cayenne

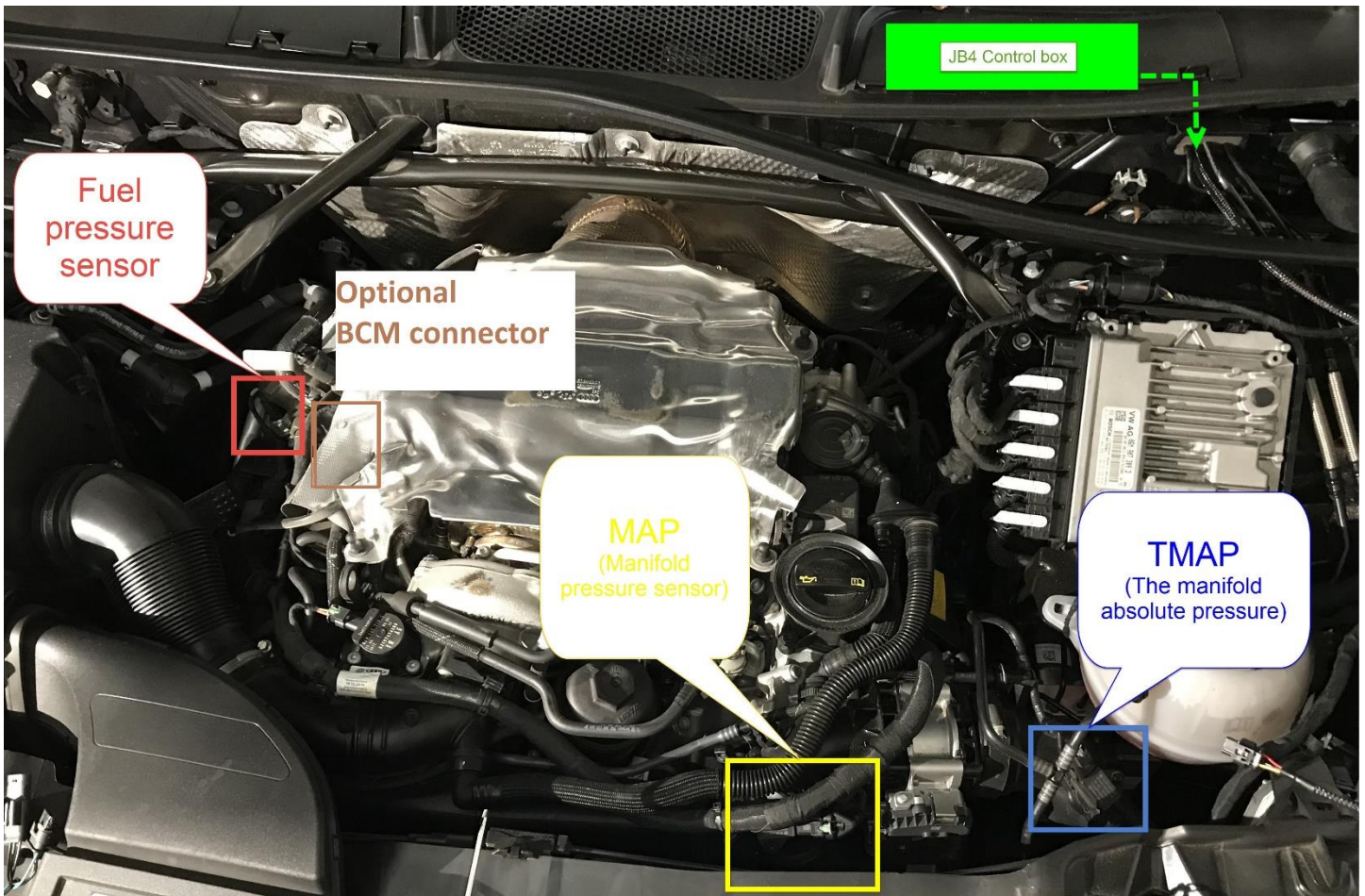
Last Updated: 8-8-2019

<http://www.burgertuning.com/terms.html>

THIS PART IS LEGAL FOR USE ONLY IN COMPETITION RACING VEHICLES AS DEFINED UNDER CALIFORNIA LAW, AND IS NOT LEGAL FOR USE IN ANY OTHER MOTOR VEHICLE. California law defines a "racing vehicle" as "a competition vehicle not used on public highways." (Calif. Health & Safety Code 39048) This part may only be used on competition racing vehicles operated exclusively on a closed course in conjunction with a sanctioned racing event. Competition-only motor vehicles may not be driven to a racing event on a public highway and must be transported on a trailer or other carrier. USE OF THIS PART IN ANY OTHER VEHICLE MAY SUBJECT YOU TO FINES AND PENALTIES FOR VIOLATION OF FEDERAL AND/OR STATE LAW, WILL VOID YOUR WARRANTY FROM BURGER MOTORSPORTS, INC, AND CAN VOID YOUR VEHICLE'S WARRANTY. It is your responsibility to comply with all applicable federal and state laws relating to use of this part, and Burger Motorsports, INC hereby disclaims any liability resulting from the failure to use this part in compliance with all applicable federal and state laws.



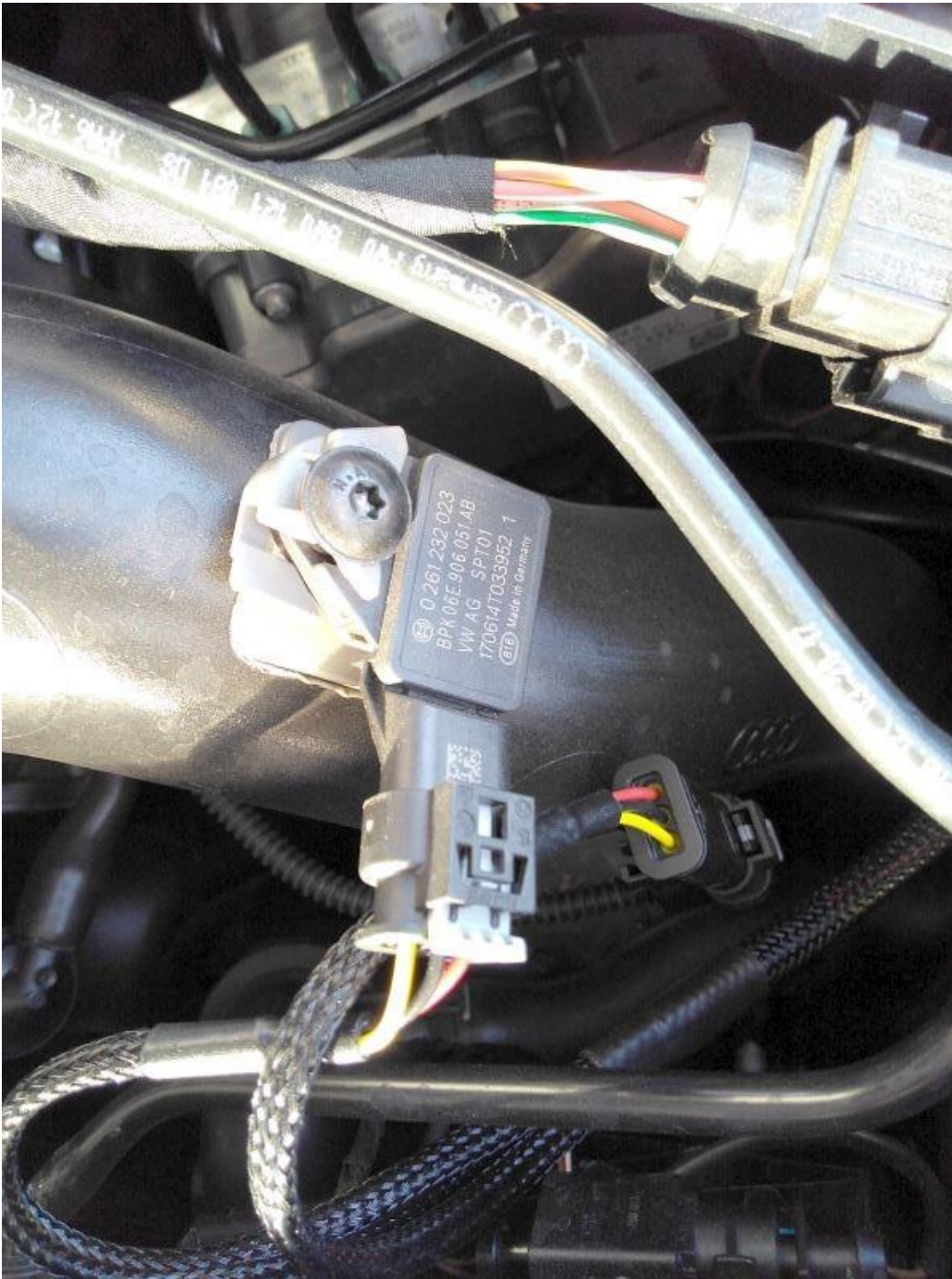
Plug location overview:
Pictured is single turbo S4 engine, RS4/5 plugs in same location



Open the hood, lock the doors, place your key far enough from the car not to wake it up, and wait 10 min for the vehicles computer to go to sleep.

The JB4 harness has 4 connection points and one optional.

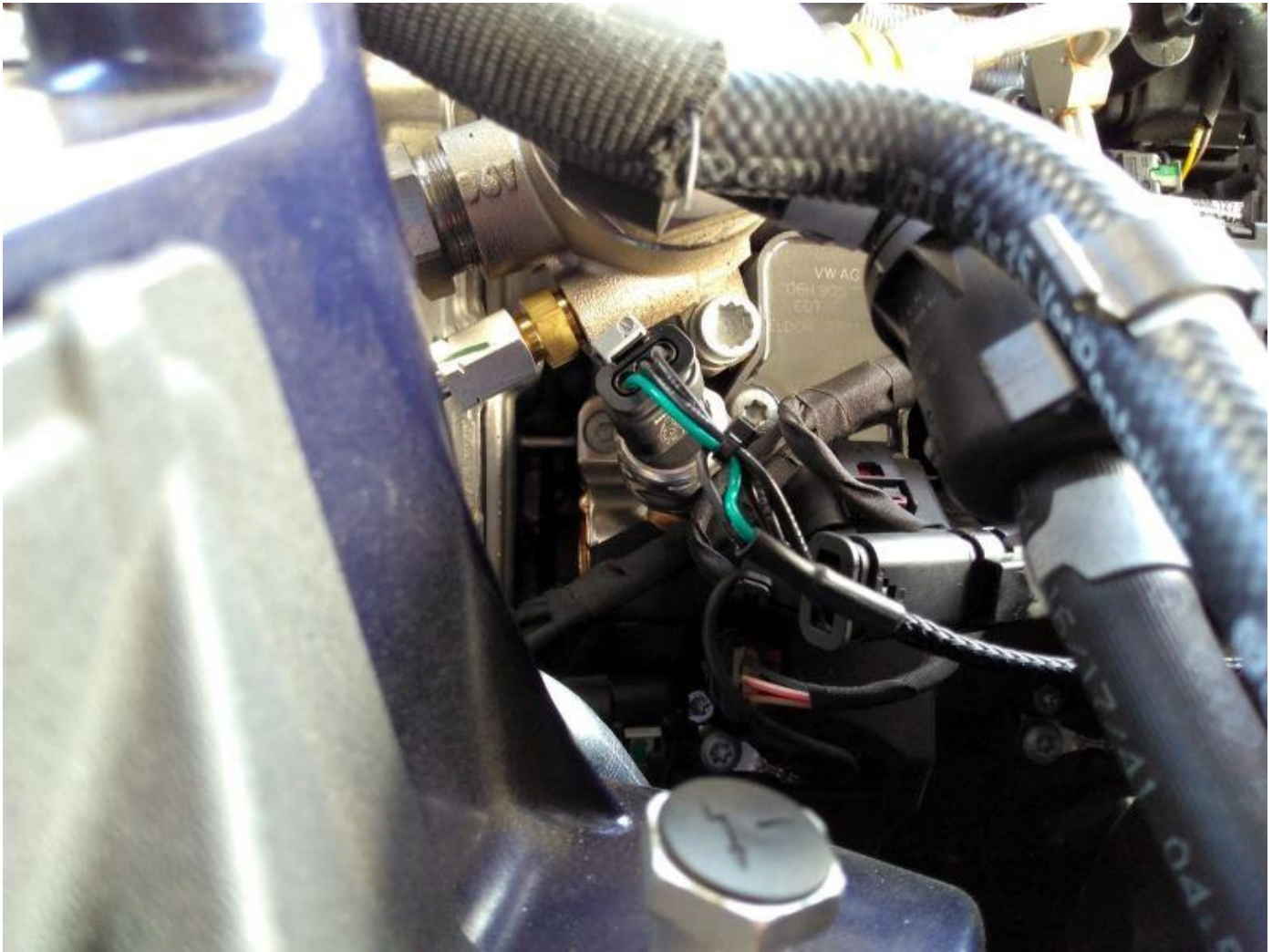
TMAP: Rainbow patch on harness. Unplug the factory connection, plug the JB4 harness in to the sensor, and plug the factory connection in to the JB4 connector, completing the loop.



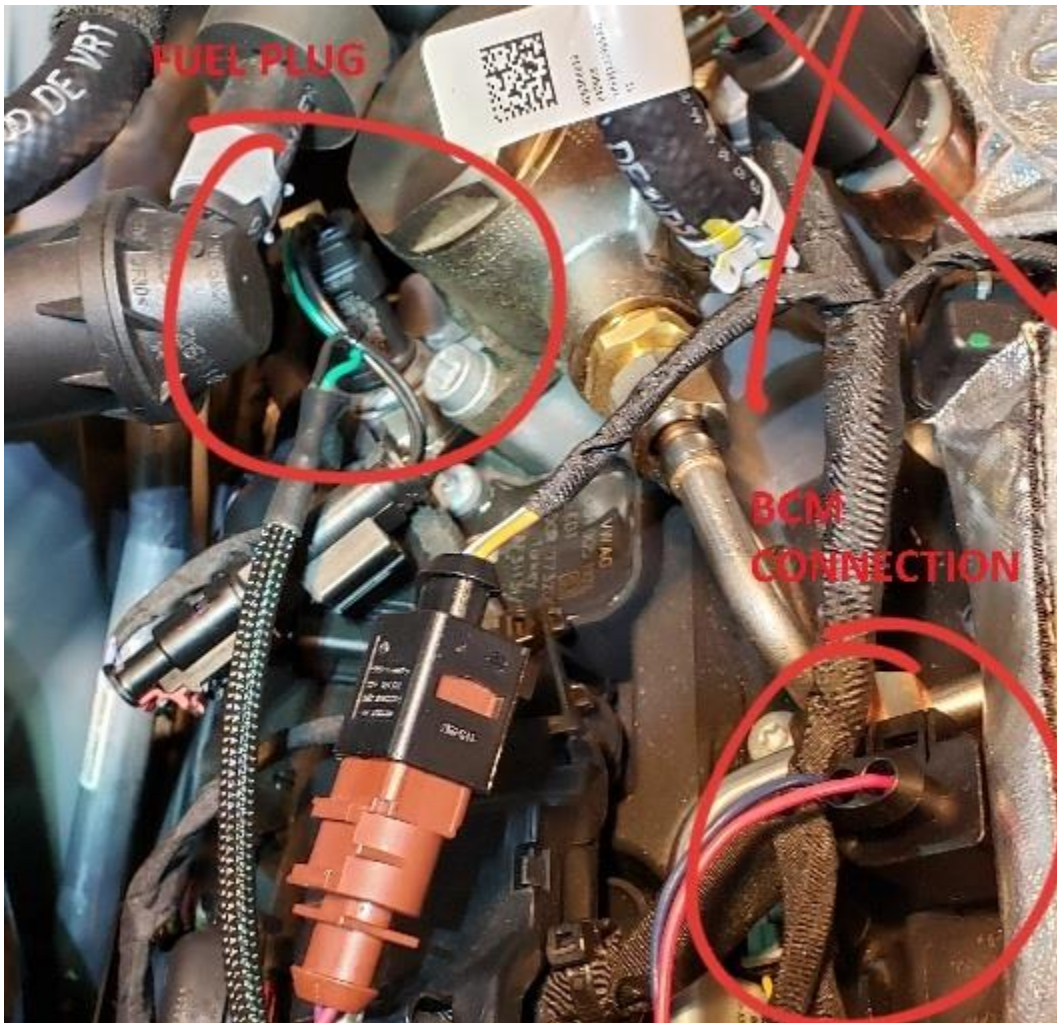
MAP: Brown patch on JB4 harness. Unplug the factory connection, plug the JB4 harness in to the sensor, and plug the factory connection in to the JB4 connector, completing the loop.



Fuel Pressure: Green/black patch on JB4 harness. This connection is optional and the connector on the fuel pressure sensor can be tricky to release. During development we found the easiest way was to use a longer screwdriver to apply pressure to the base of the connector while pressing the clip in. This connection will come in to play if you plan to mix in E85 fuels. If not planning to use E85 you can skip it at least initially.



OPTIONAL BCM Connector (boost control module) standard on Revision 2 units:
This connector is only needed for cars running more aggressive maps on ethanol or larger turbos. It is the set of plugs where one is brown and one is black.



The install of the BCM connection is covered in the start of this video as well as a good ground position for the ground wire: <https://youtu.be/bNP1cy-QOi8>

OBDII CANBUS: Extra wire that plugs in to JB4 harness small black connector near box. This optional connector allows the JB4 to datalog and incorporate advanced data inputs in to its tuning. It plugs in to the OBDII plug on the bottom of the dash on the driver's side and is routed to the engine bay by going through a grommet in the firewall (more work but much cleaner) or routing around the outside of the door jamb (quick and easy). To route through the firewall you will use a scissors to cut the cap off this unused grommet, and then using a coat hanger or piece of aluminum wire attached to the OBDII plug can route it through the grommet from the inside.

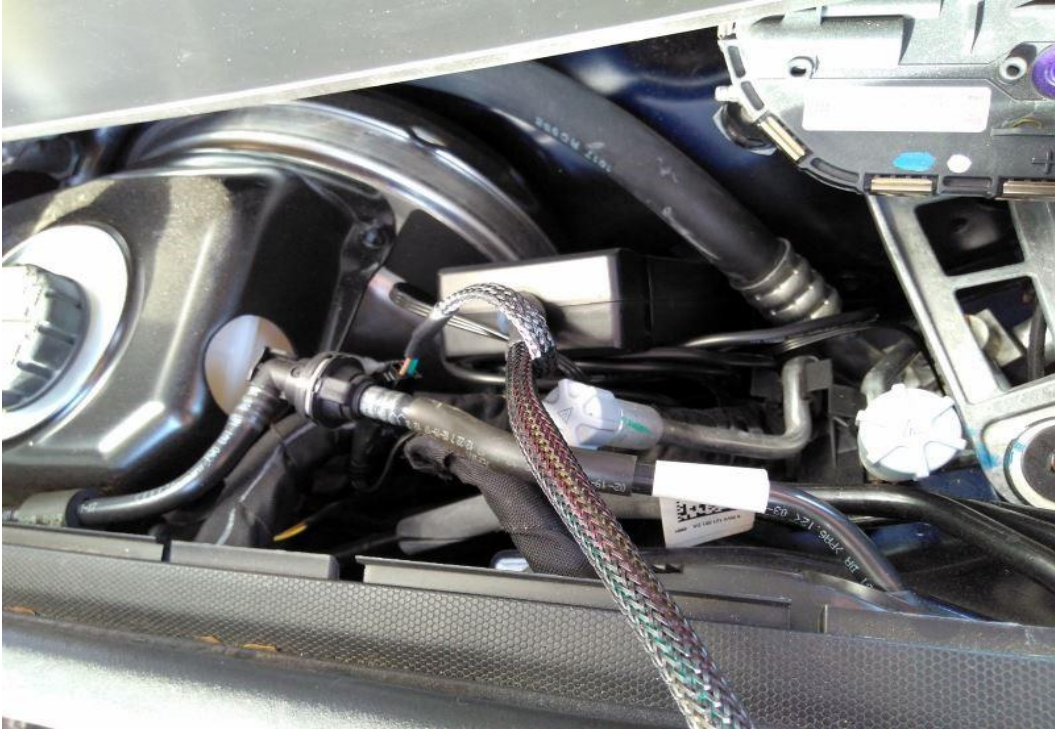


Panel to be removed to expose rubber grommet

OBD connection

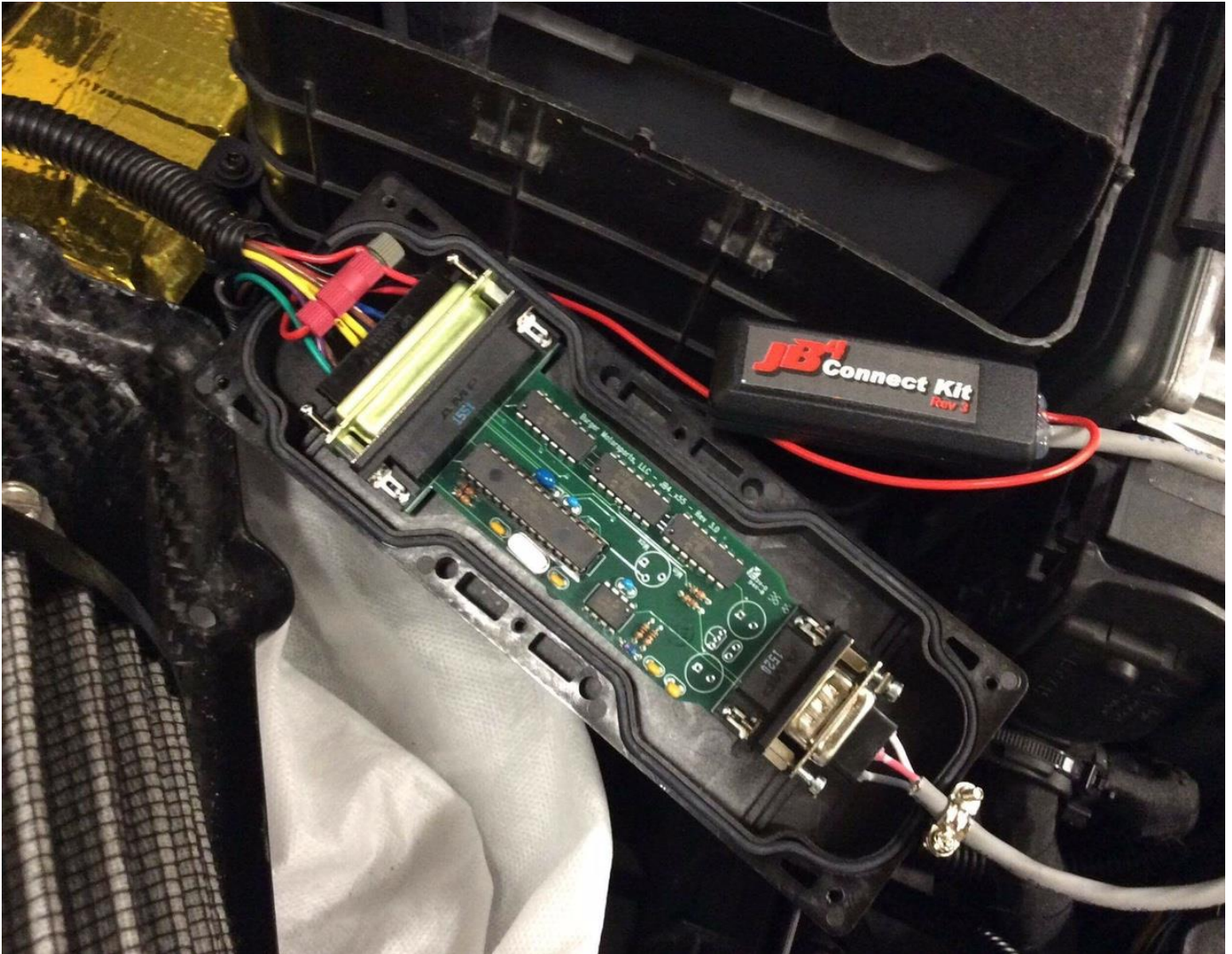


Place the JB4 control box next to the brake booster as shown.



The optional data cable connects straight onto the JB4 circuit board by pulling the enclosure open.

Bluetooth connect kit connects with the same manner attaching the blue wire with the positap to any of the two red wires on the far side of the harness as seen below (indicated is a red wire coming from the connect kit):



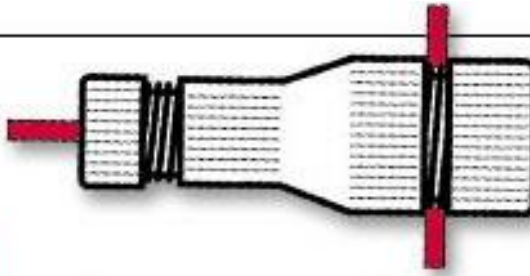
Posi-Tap™

TAP CONNECTOR



- TAPS WIRES WITHOUT CUTTING
- TOTAL WIRE INTEGRITY IS MAINTAINED
- INSTALLS IN SECONDS BY HAND
- NO CRIMPING OR TOOLS REQUIRED
- REUSABLE OR PERMANENT
- LESS RESISTANCE
- VIBRATION PROOF
- FULLY INSULATED

**POWERS UP TO (4) LEADS
AT ONCE!**



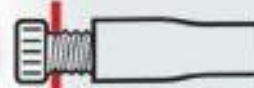
QUICK & EASY

1



Insert Hot Wire

2



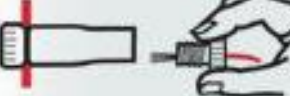
Tighten

3



Strip Leads

4



Insert & Tighten



NO CRIMPING



NO TOOLS NEEDED

Installation is complete! The JB4 comes preset to Map 1. Using a BMS DATA cable or JB4 Mobile adapter you can adjust maps, data log, and perform updates.

In the event the car shows errors on key on delete the faults using the JB4 app and lock the car there after for a good 10 minutes.

Contact us directly at george@burgertuning.com for any additional information or visit <https://www.n54tech.com/forums/showthread.php?t=49608>