

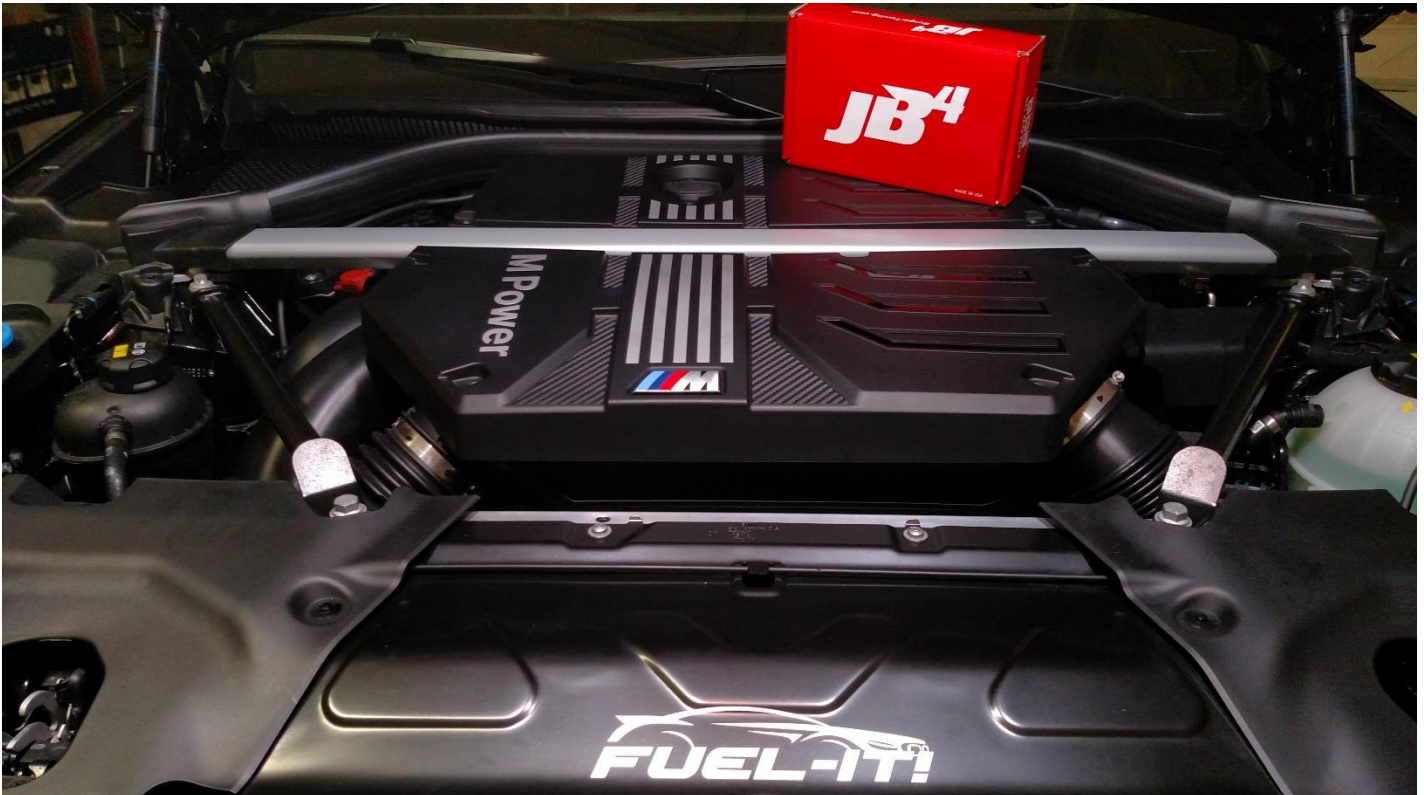


## BMS 2020+ X4M Install Guide

Last Updated: 11/09/2019

<http://www.burgertuning.com/terms.html>

THIS PART IS LEGAL FOR USE ONLY IN COMPETITION RACING VEHICLES AS DEFINED UNDER CALIFORNIA LAW, AND IS NOT LEGAL FOR USE IN ANY OTHER MOTOR VEHICLE. California law defines a "racing vehicle" as "a competition vehicle not used on public highways." (Calif. Health & Safety Code 39048) This part may only be used on competition racing vehicles operated exclusively on a closed course in conjunction with a sanctioned racing event. Competition-only motor vehicles may not be driven to a racing event on a public highway and must be transported on a trailer or other carrier. USE OF THIS PART IN ANY OTHER VEHICLE MAY SUBJECT YOU TO FINES AND PENALTIES FOR VIOLATION OF FEDERAL AND/OR STATE LAW, WILL VOID YOUR WARRANTY FROM BURGER MOTORSPORTS, INC, AND CAN VOID YOUR VEHICLE'S WARRANTY. It is your responsibility to comply with all applicable federal and state laws relating to use of this part, and Burger Motorsports, INC hereby disclaims any liability resulting from the failure to use this part in compliance with all applicable federal and state laws.

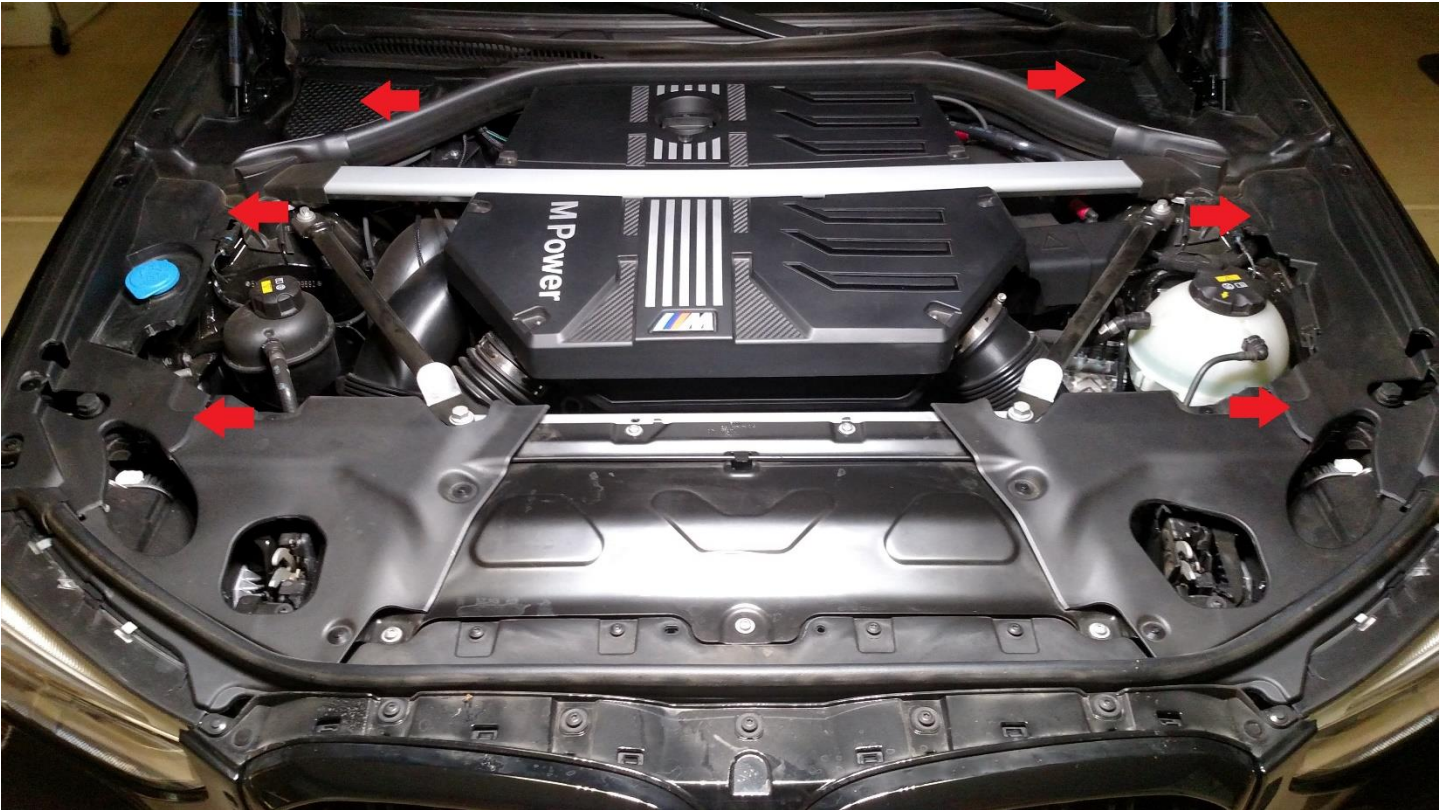


Open the hood, lock the doors, place your key far enough from the car not to wake it up, and wait 5 min for the vehicles computer to go to sleep.

The JB4 system has 5 connections total:

- Map on intake manifold (Rainbow colored wires, 4 position connector)
- MAP on charge pipe (Brown and black colored wires, 4 position connector)
- EWG\_A (Purple/Blue colored wires, 5 position connector)
- EWG\_B (Purple/Blue colored wires, 5 position connector)
- OBDII (black wire, small 4 position connector to attach to JB4 harness)

Remove left and right side engine bay covers.



Remove these engine covers.



To remove the covers near the windshield, unlock as shown and lift the covers.



To remove the side covers you'll need to remove all twelve of these grommets.



Disconnect and remove these sensors on the left and right side prior to removing the panels.

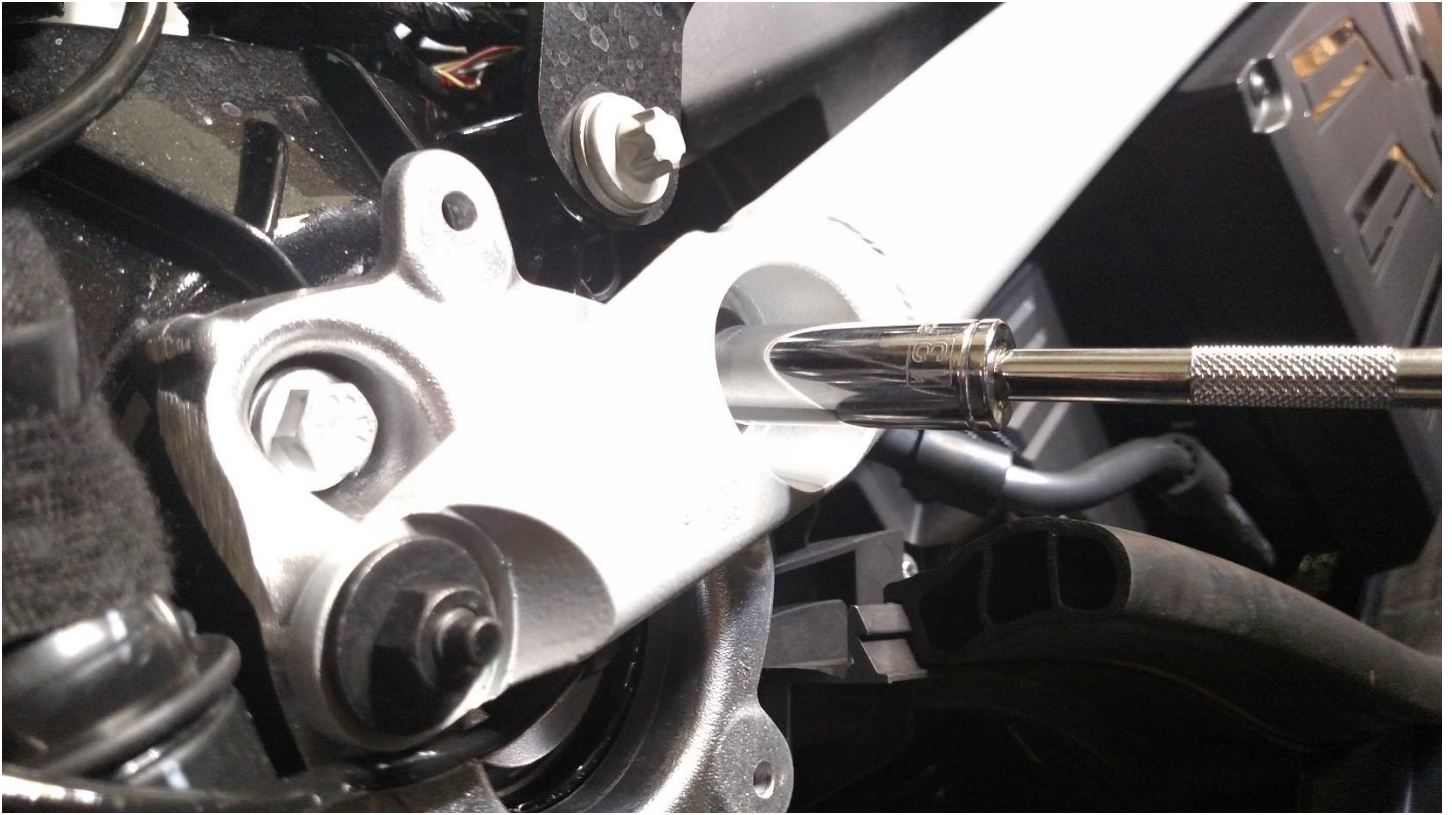


Disconnect this module on the drivers side to completely remove the panel.



## Remove the strut brace

Remove the four 13mm strut brace nuts and the strut brace.



## Remove the stock intake filter assembly.

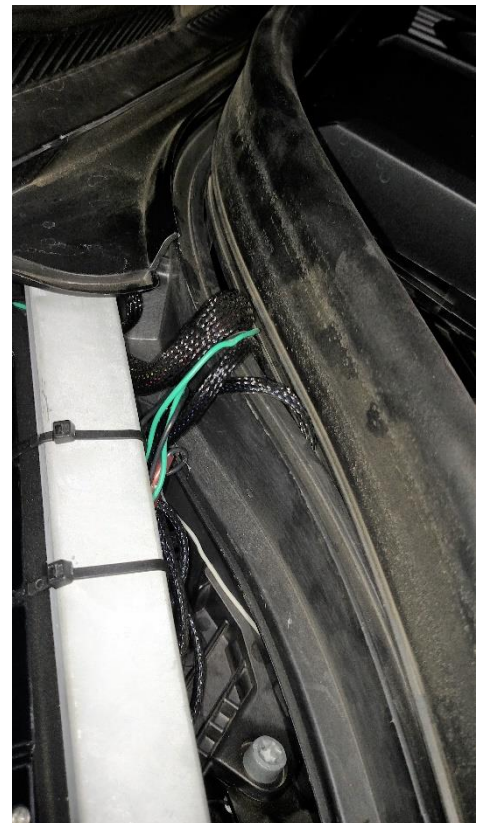
Loosen the four hose clamps to the intake filter assembly with a 6mm socket.



Remove the intake filter assembly by pulling straight up on the assembly and plug intake hoses with towels so that nothing can accidentally be dropped in to them.



**Mount JB4 to passenger side strut brace and route wires into engine bay**

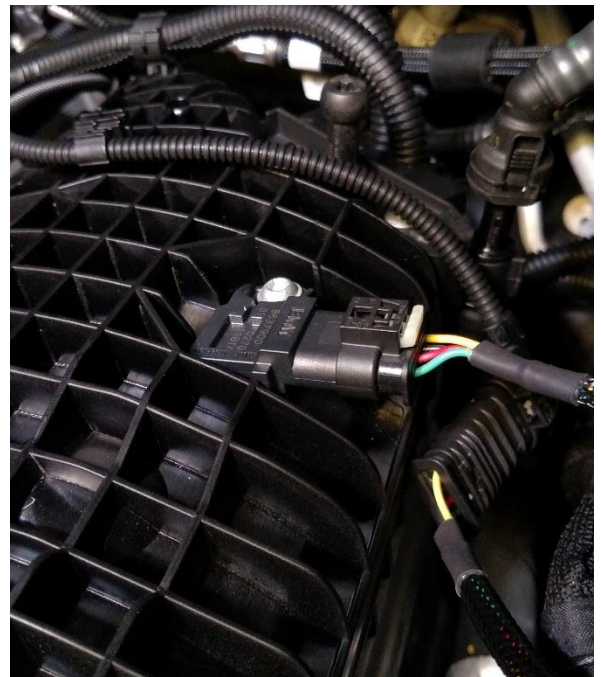


## Install the JB4 MAP sensor connection on the intake manifold

Locate the stock MAP sensor on the intake manifold and disconnect it.

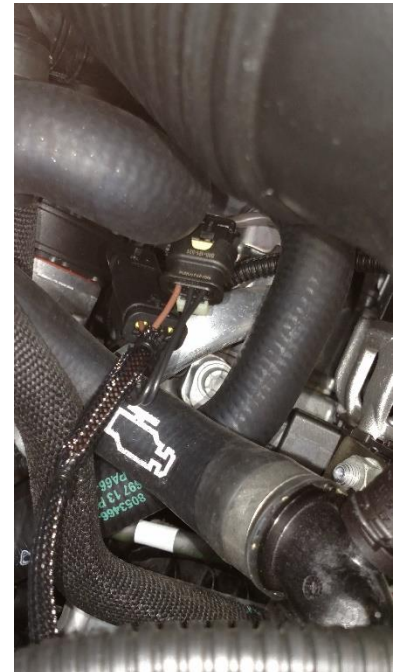
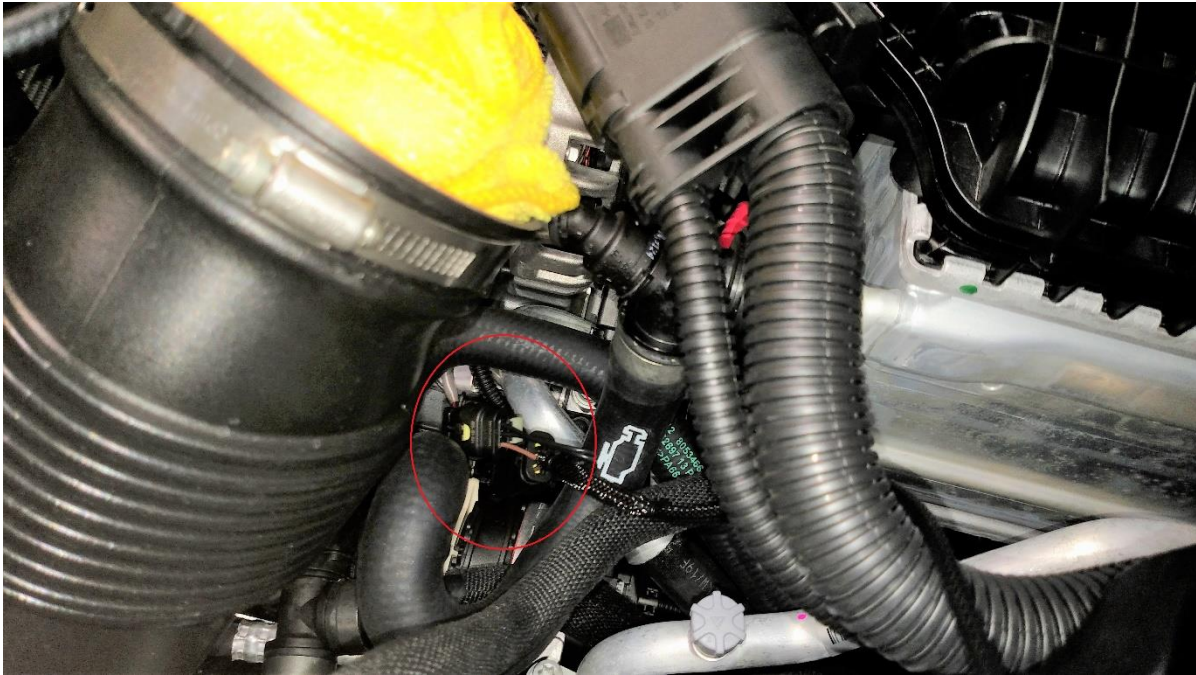


Connect the red, green, black, and yellow JB4 patch wire connectors to the stock manifold sensor and stock connector.



**Connect the brown and black JB4 patch wire connectors to the TMAP sensor on the charge pipe.**

The easiest access is to remove the driver's side front wheel and small wheel well cover shown below.





**Connect the EWG connectors. The wastegates connections are located below the passenger side intake hoses.**

Remove both stock connectors.



Plug the JB4 harness in to the wastegate controller and plug the stock connector in to the JB4 harness for both turbos. Note: There is no particular order.



## Install the optional OBDII connector

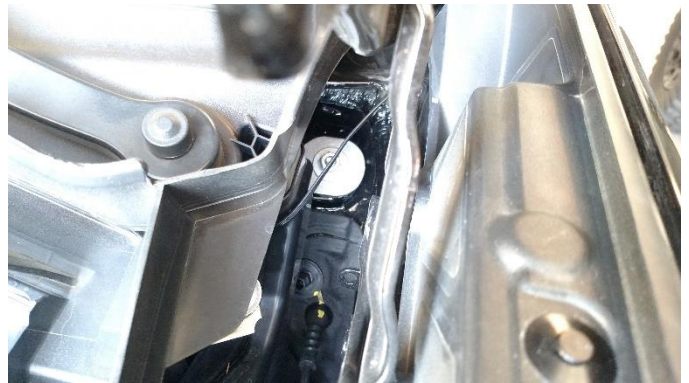
The optional OBDII CANbus connection allows the JB4 to perform more advanced tuning functions, diagnostics/logging, and in the near future in dash map changes and controls.



Connect the OBDII connector to the JB4.



Route the OBDII cable to the drivers side, through the fender, driver's door seal, and plug in to the OBDII port under the dash near the driver's side door.



Installation is complete! The JB4 comes preset to map1. Refer to this post for the full map guide, latest firmware, and additional details:

<https://www.n54tech.com/forums/showthread.php?t=59392>