



-INSTALLATION- INSTRUCTIONS



LP ADVENTURE LIFT KIT



SUBARU OUTBACK 2015-2019

CONGRATULATIONS FOR YOUR NEW LP AVENTURE LIFT KIT!

If you have any question or need assistance
during the installation please
contact our team. You
can find the information
on the last
page.



IN
THE
BOX

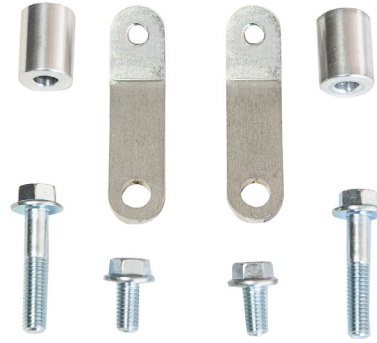


IN THE BAGS

1



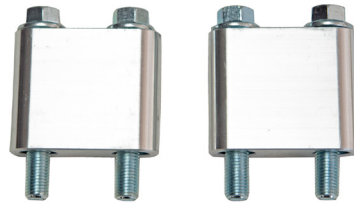
2



3



4



5





NECESSARY TOOLS

1. - We recommend the use of a lift
2. - Jack stand to support the sub-frame
3. - Ratchet
4. -12mm Socket
5. -14mm Socket
6. -17mm Socket
7. -19mm Socket
8. - 22mm Socket
9. -10mm Wrench
10. -12mm Wrench
11. - 14mm Wrench
12. -17mm Wrench
13. - Exhaust Hanger Removal Pliers

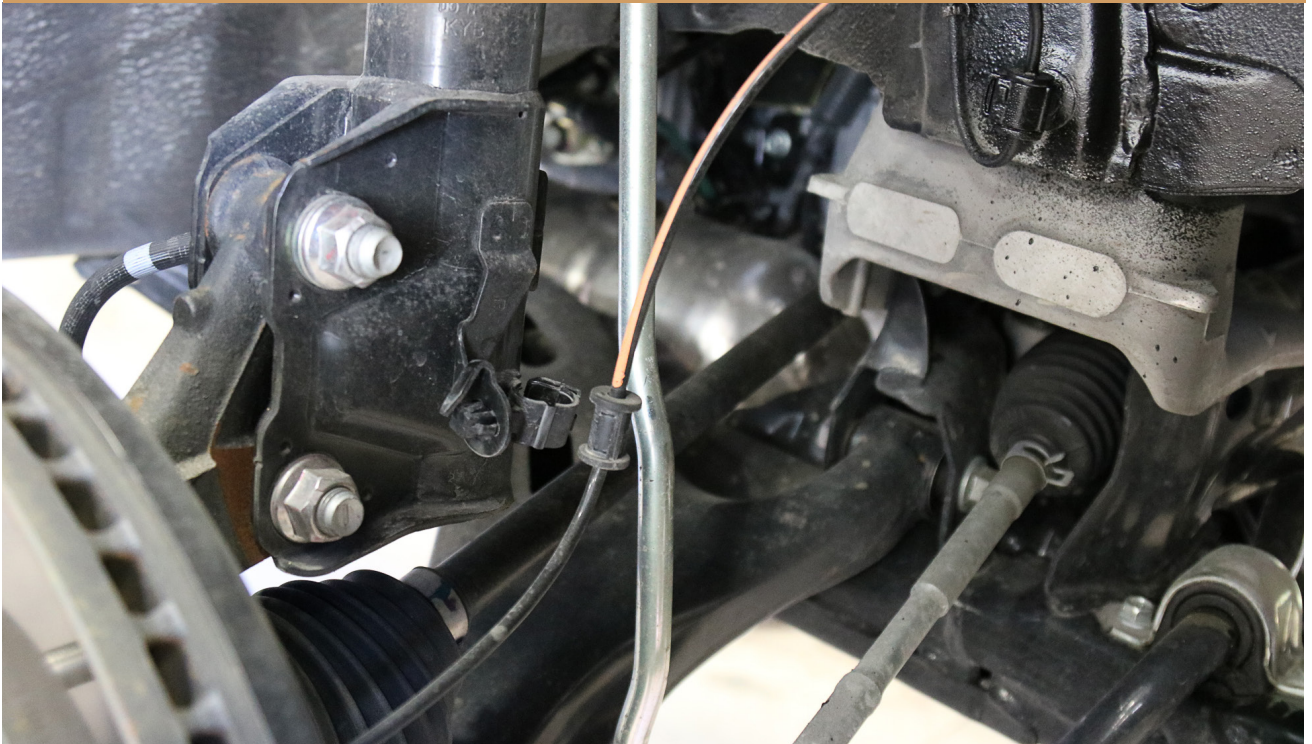
1

UNBOLT THE BOLT BRAKE LINE BRACKET



2

RELEASE THE ABS SENSOR FROM ITS CLIP



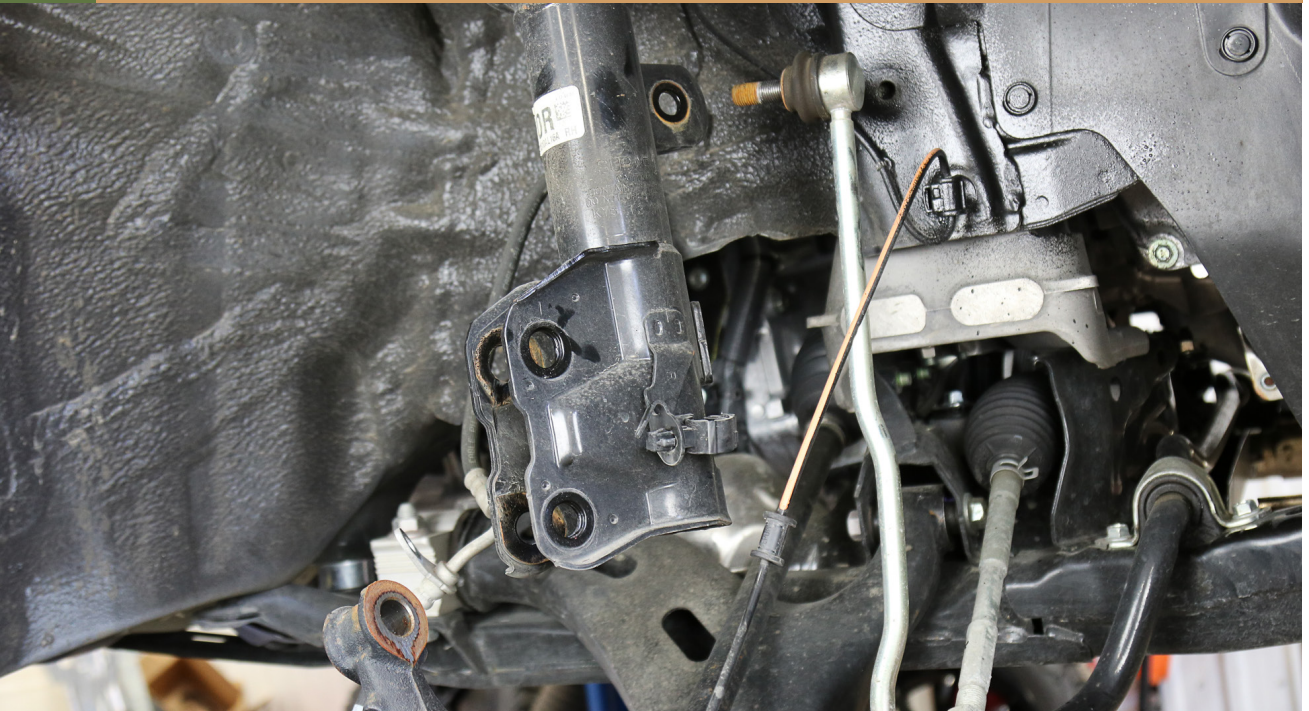
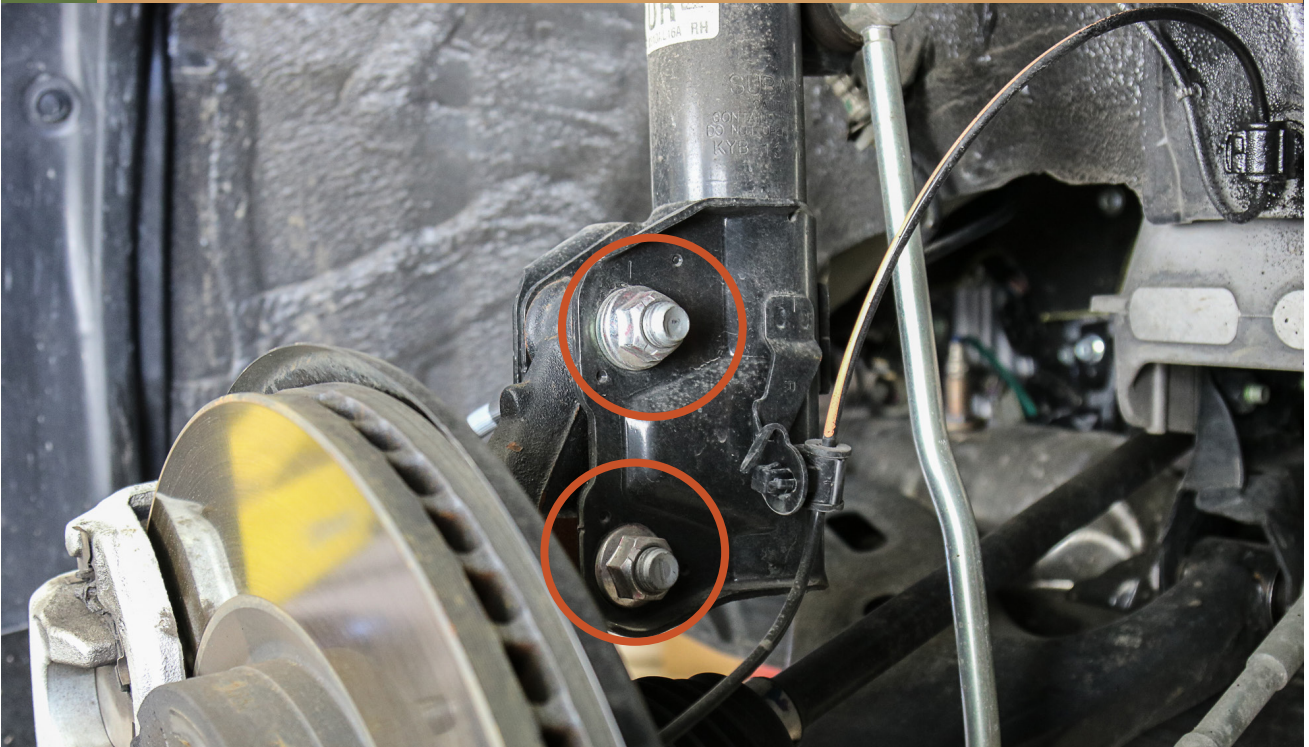
3

UNBOLT THE TOP OF THE ENDLINK



4

REMOVE THE BOTTOM SUSPENSION BOLTS



5

UNBOLT THE TOP OF THE SUSPENSION



6 INSTALL THE TOP PLATE SPACERS USING THE FACTORY NUTS

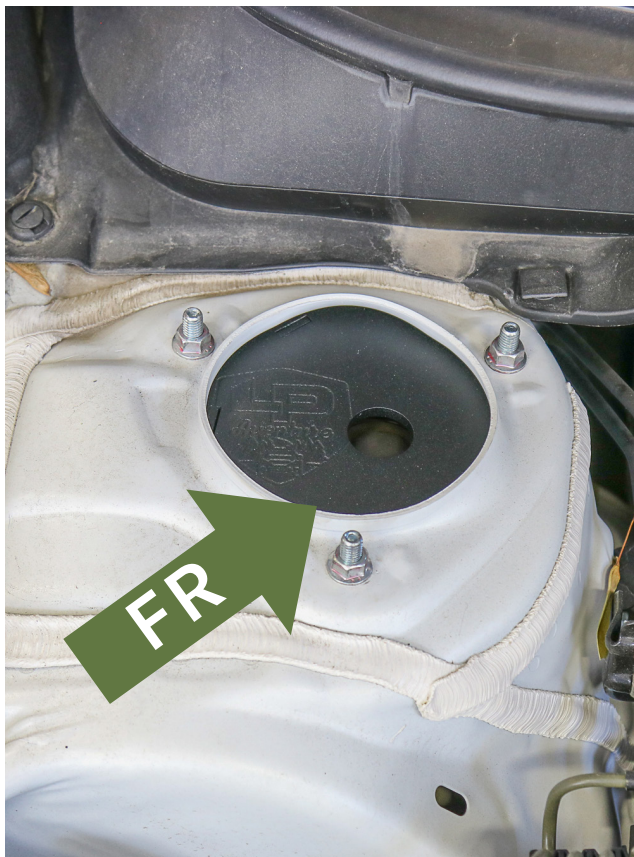


RE INSTALL THE STRUT



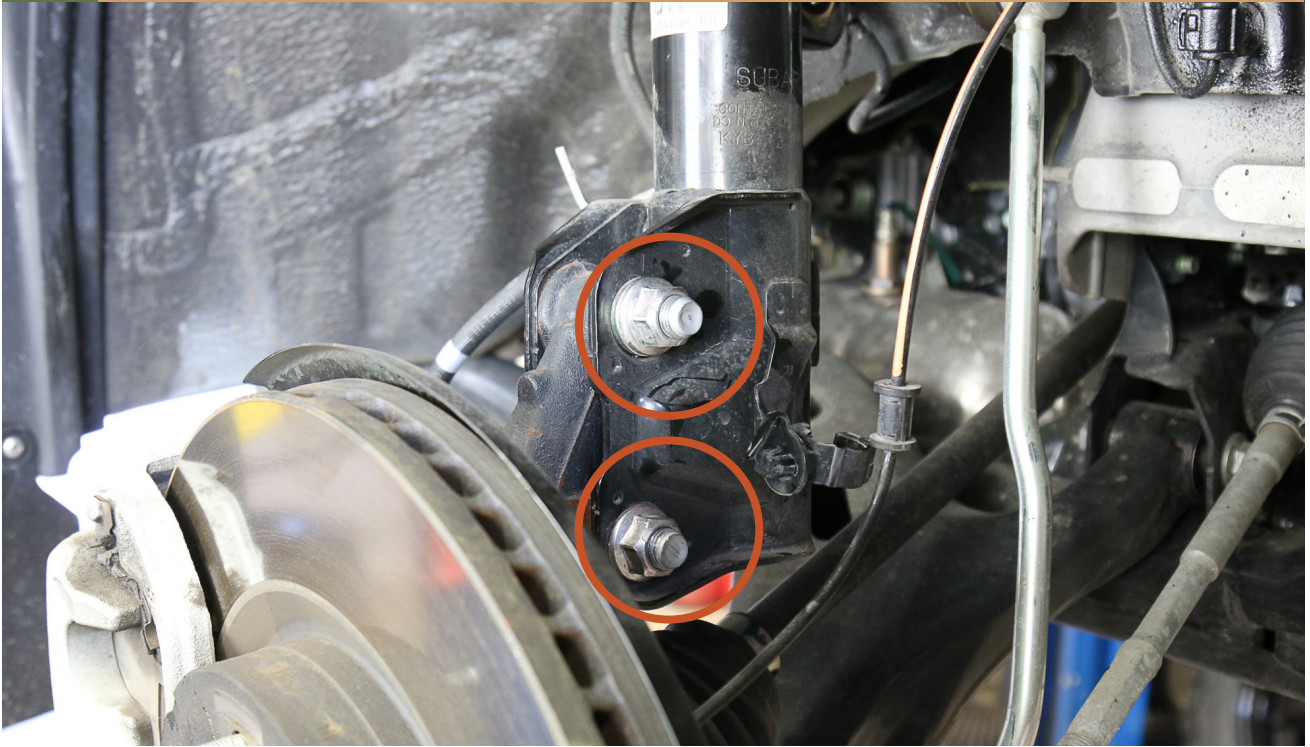
FRONT RIGHT

FRONT LEFT



7

RE INSTALL LOWER STRUT BOLTS



11

RE INSTALL ENDLINK



8

RE INSTALL BRAKE LINE BRACKET



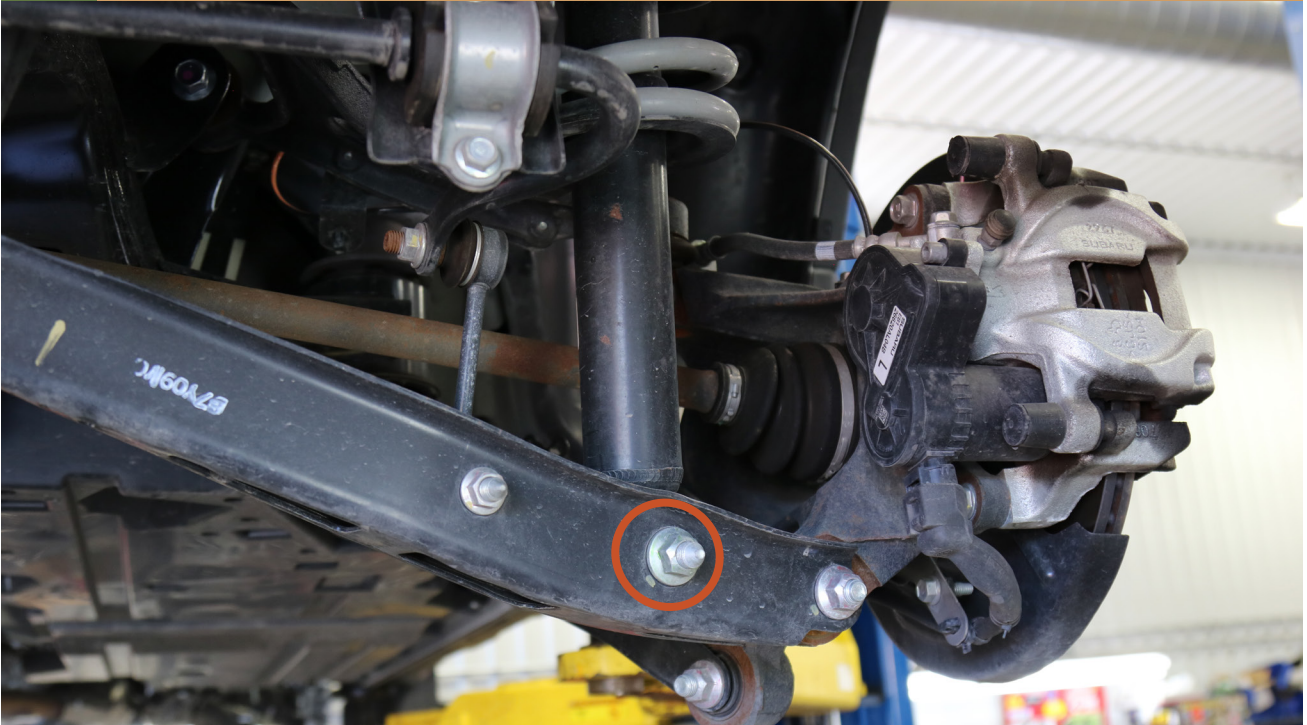
9

RE CLIP ABS SENSOR



10

REMOVE THE REAR STRUT BOLT



11

REMOVE TRUNK FLOORING



12

LOCATE STRUT MOUNTING BOLTS



13

REMOVE STRUT NUTS



14

Remove Strut



15 INSTALL TOPPLATE SPACERS USING FACTORY HARDWARE



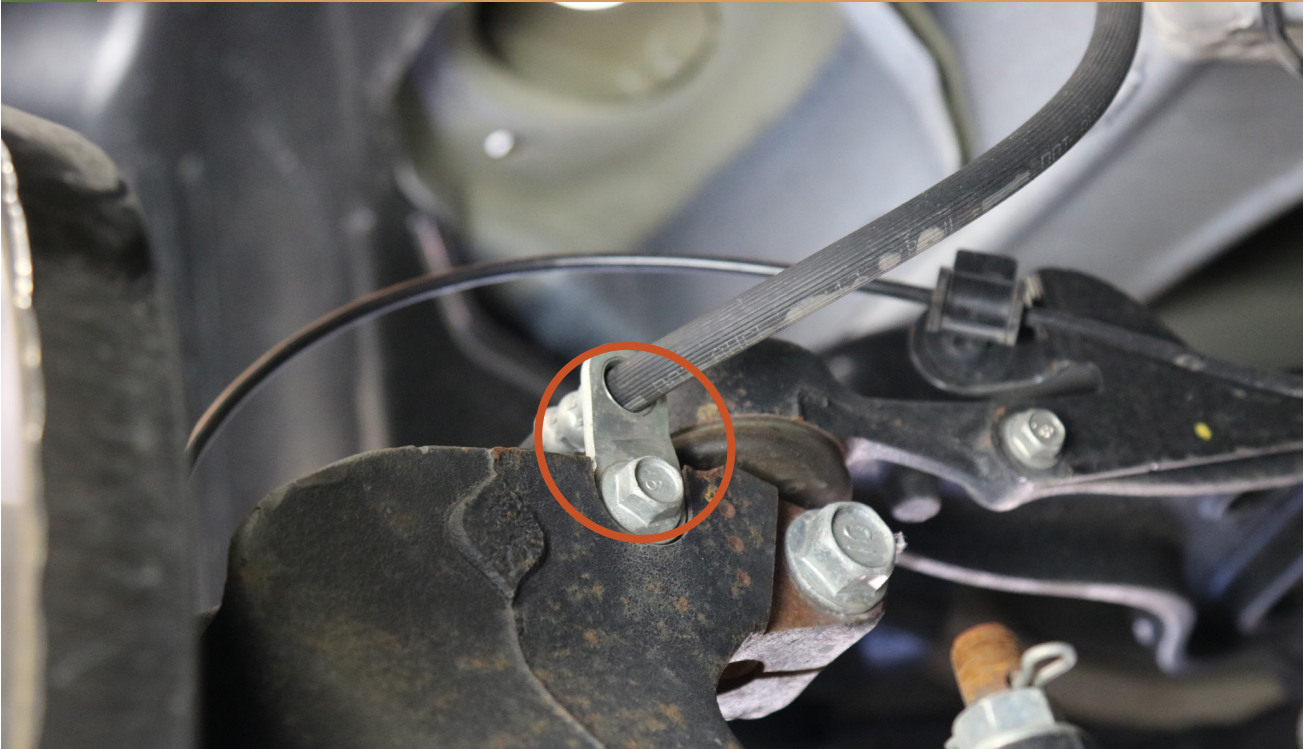
16

INSTALL HAND BRAKE CABLE SPACER



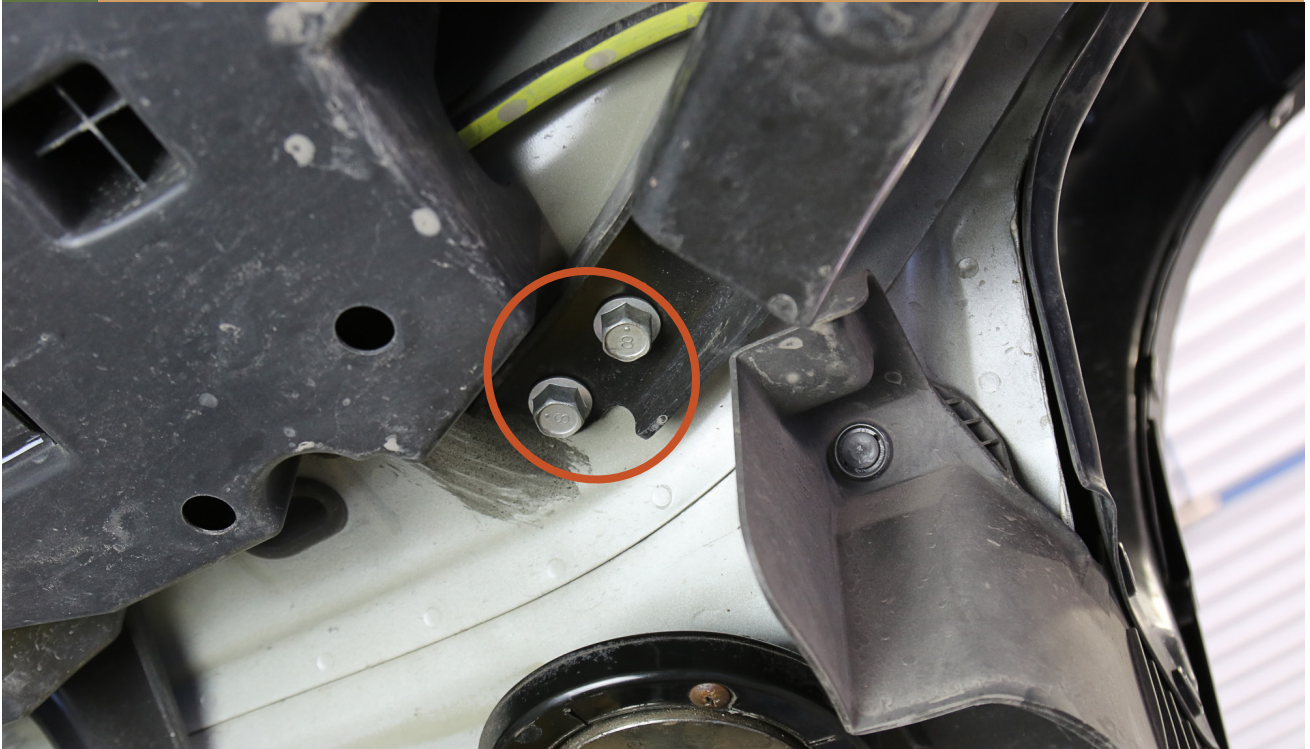
17

INSTALL BRAKE CABLE SPACER



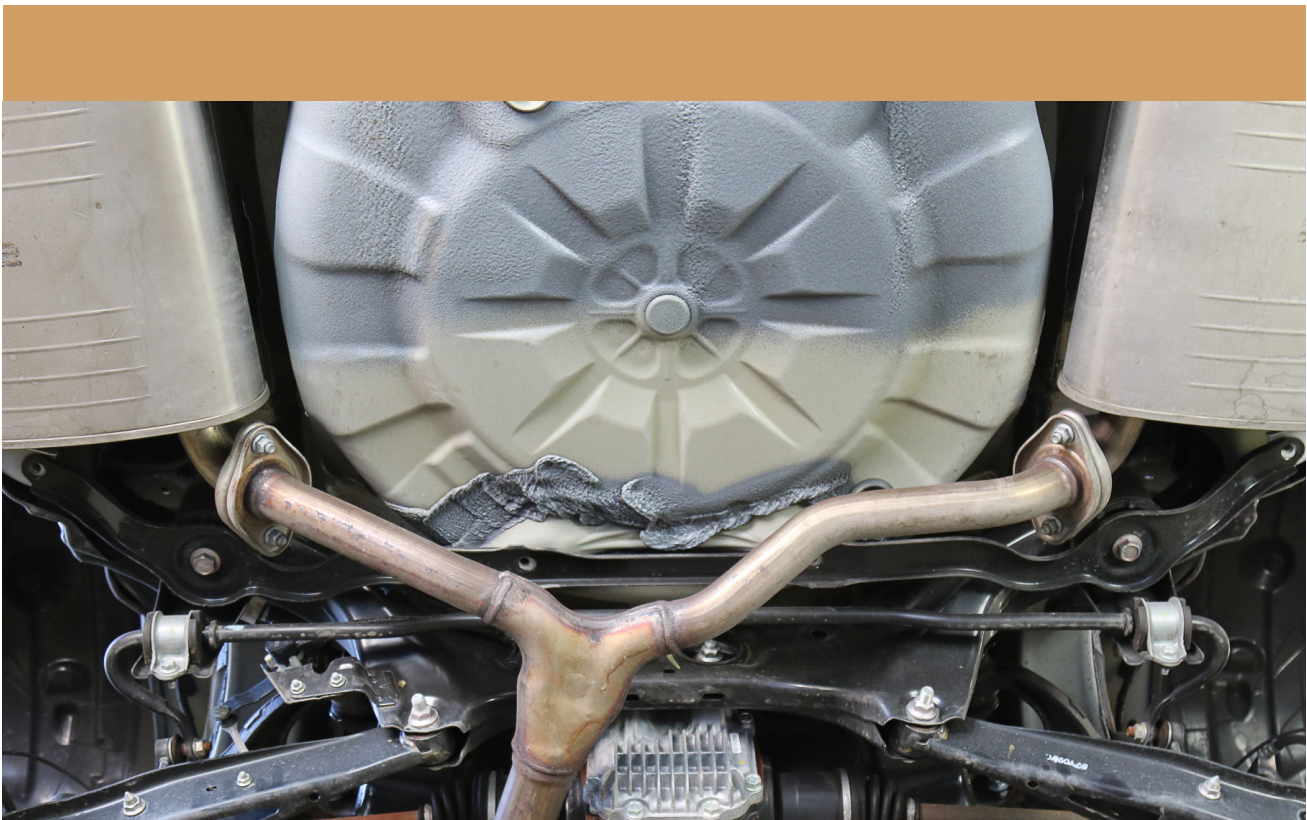
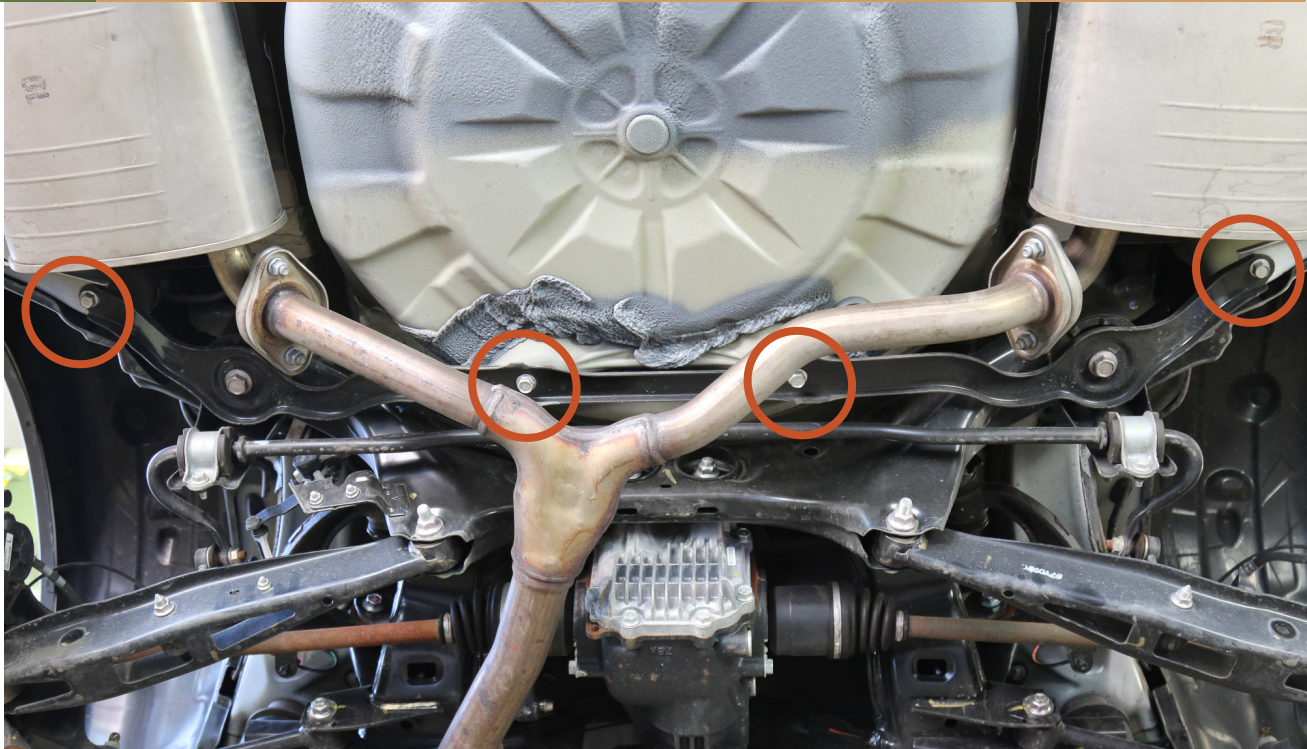
18

REMOVE THE SUPPORT BRACKET BOLTS ON THE FRONT OF THE REAR SUBFRAME



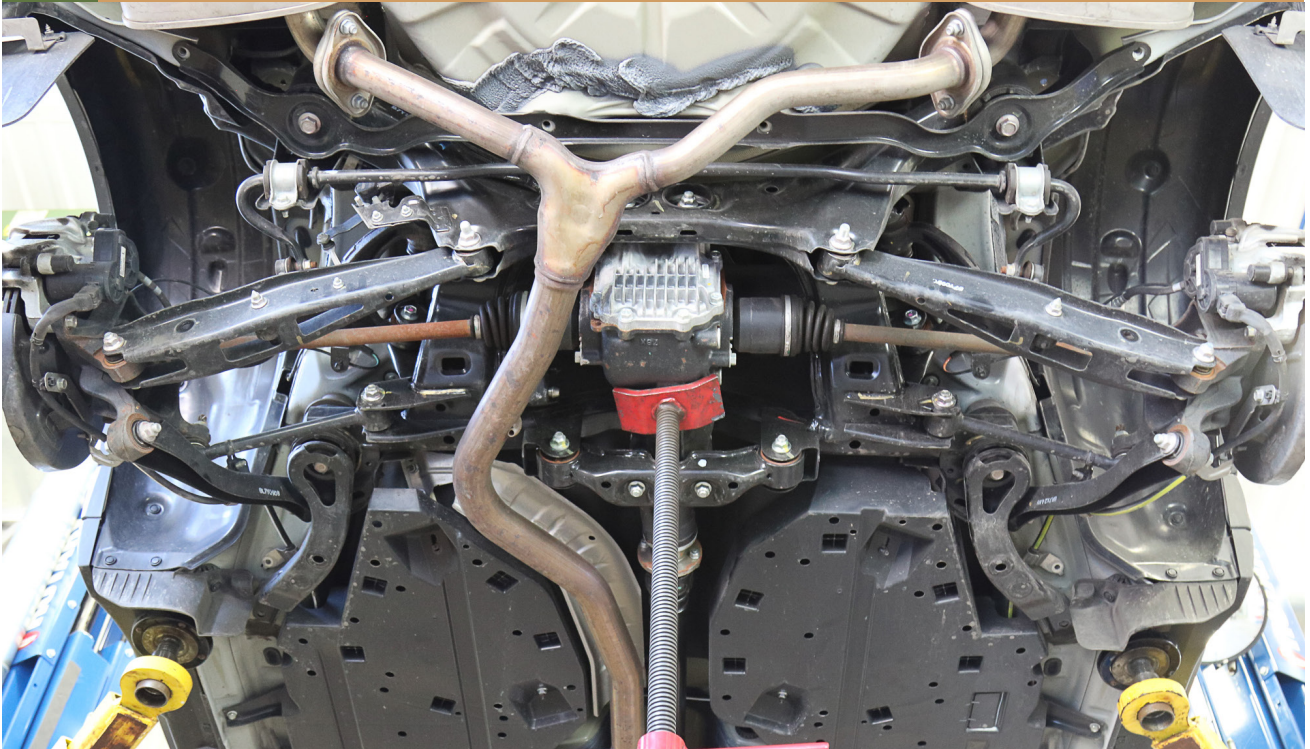
19

REMOVE THE SUPPORT BRACKET BOLTS ON THE
BACK OF THE REAR SUBFRAME



20

USE A TRANSMISSION JACK TO SUPPORT THE REAR DIFF



21

REMOVE BACK SUBFRAME BOLTS ALONG WITH THE SUPPORT BRACKET



22

TEMPORARILY INSTALL THE SUPPLIED SUBFRAME BOLTS

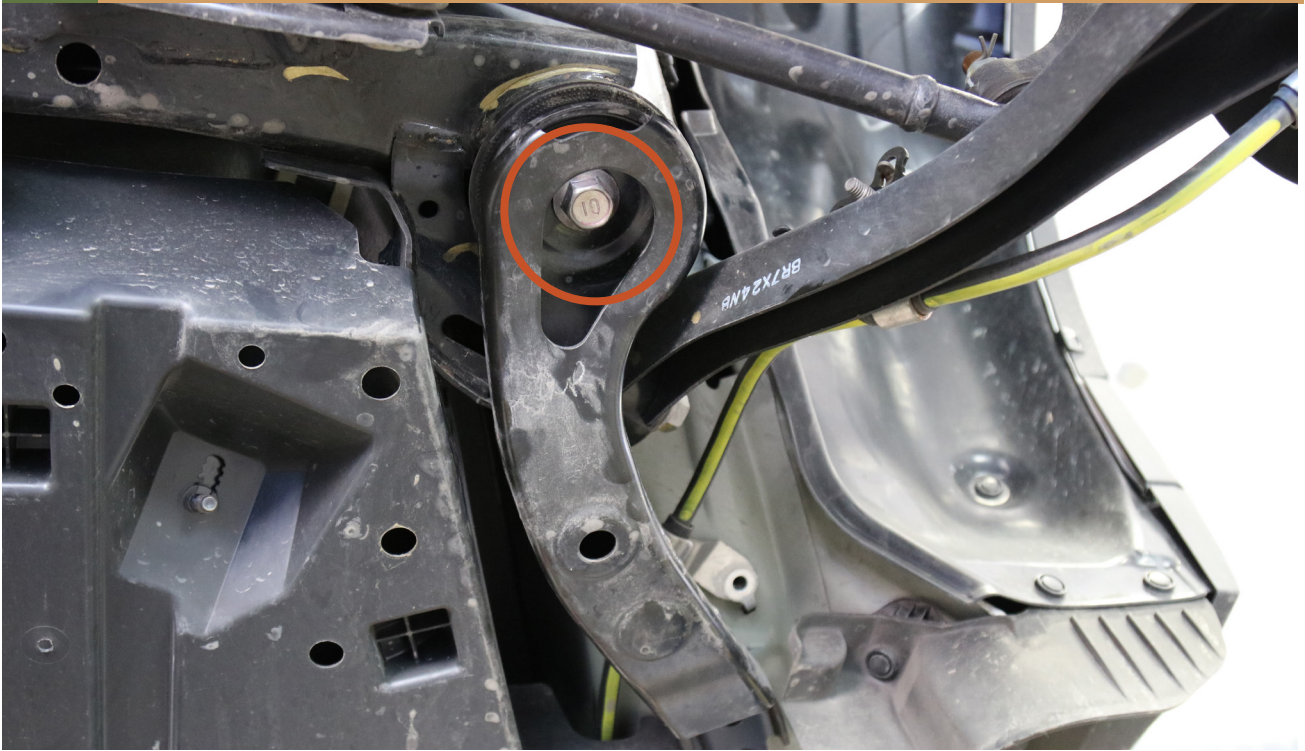


THE BOLTS WILL HELP KEEP EVERYTHING ALIGNED



23

REMOVE THE FRONT SUBFRAME BOLTS



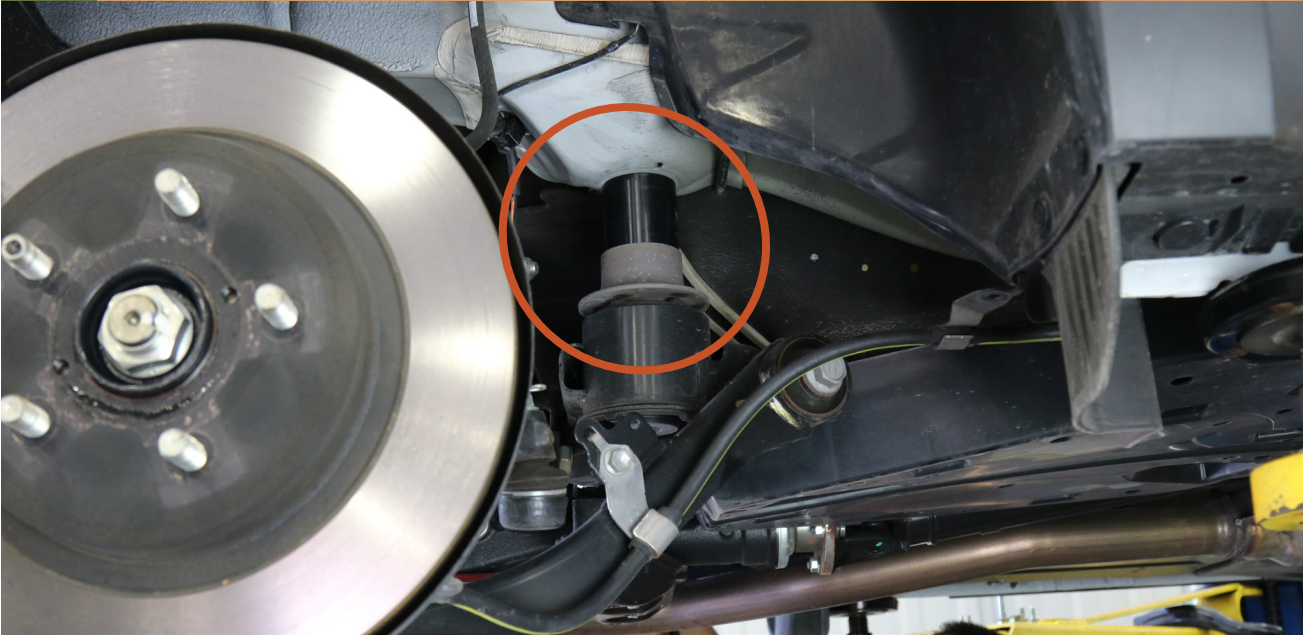
24

SLOWLY LOWER THE SUBFRAME SLIGHTLY



25

INSTALL SUBFRAME SPACERS IN THE FRONT OF THE SUBFRAME WITH PROVIDED BOLTS



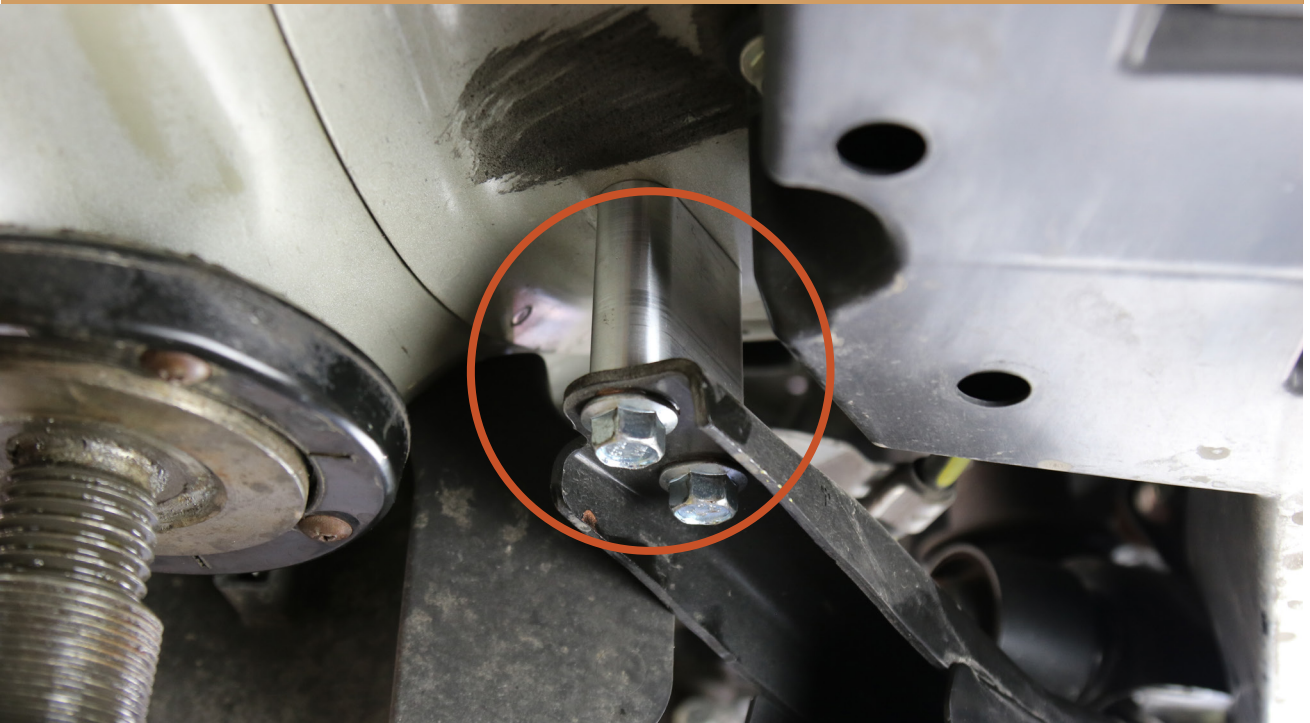
26

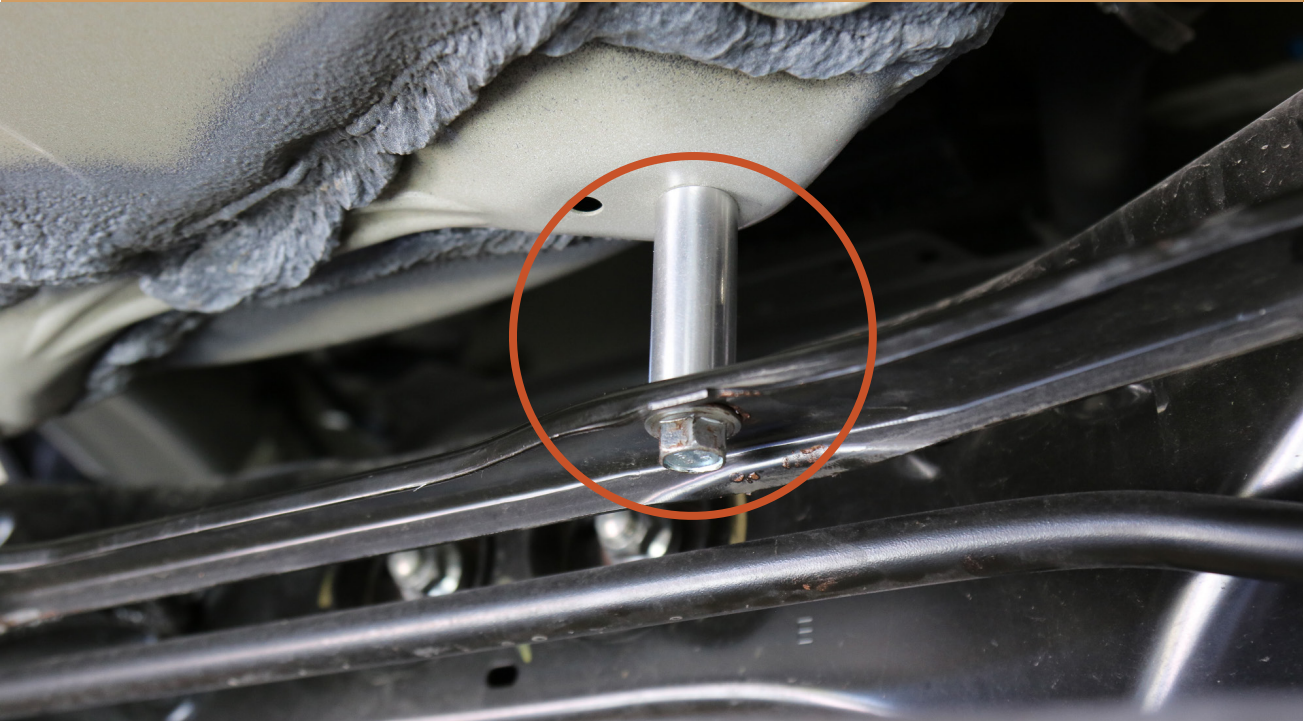
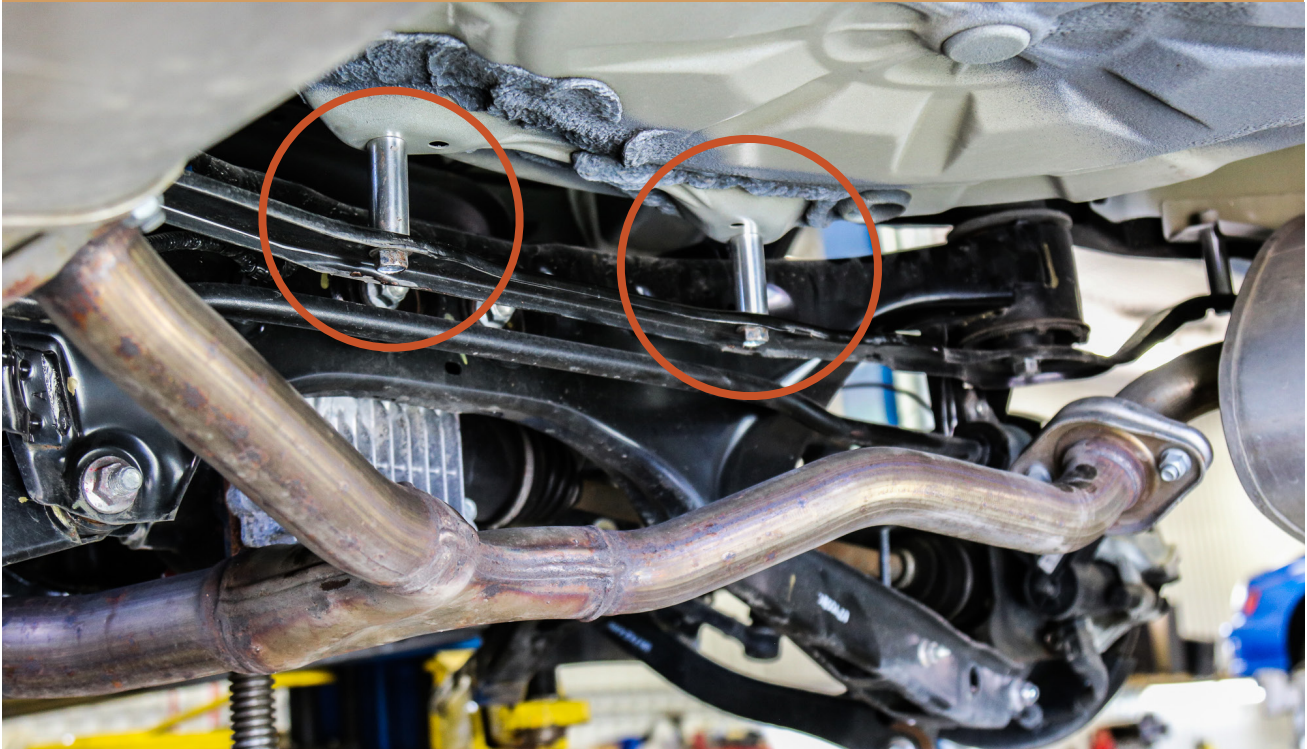
REMOVE TEMPORARY BOLTS IN THE REAR OF THE SUBFRAME AND RE INSTALL WITH SUBFRAME SPACERS



27

INSTALL THE SUBFRAME BRACKET SPACERS





28

REINSTALL REAR STRUTS

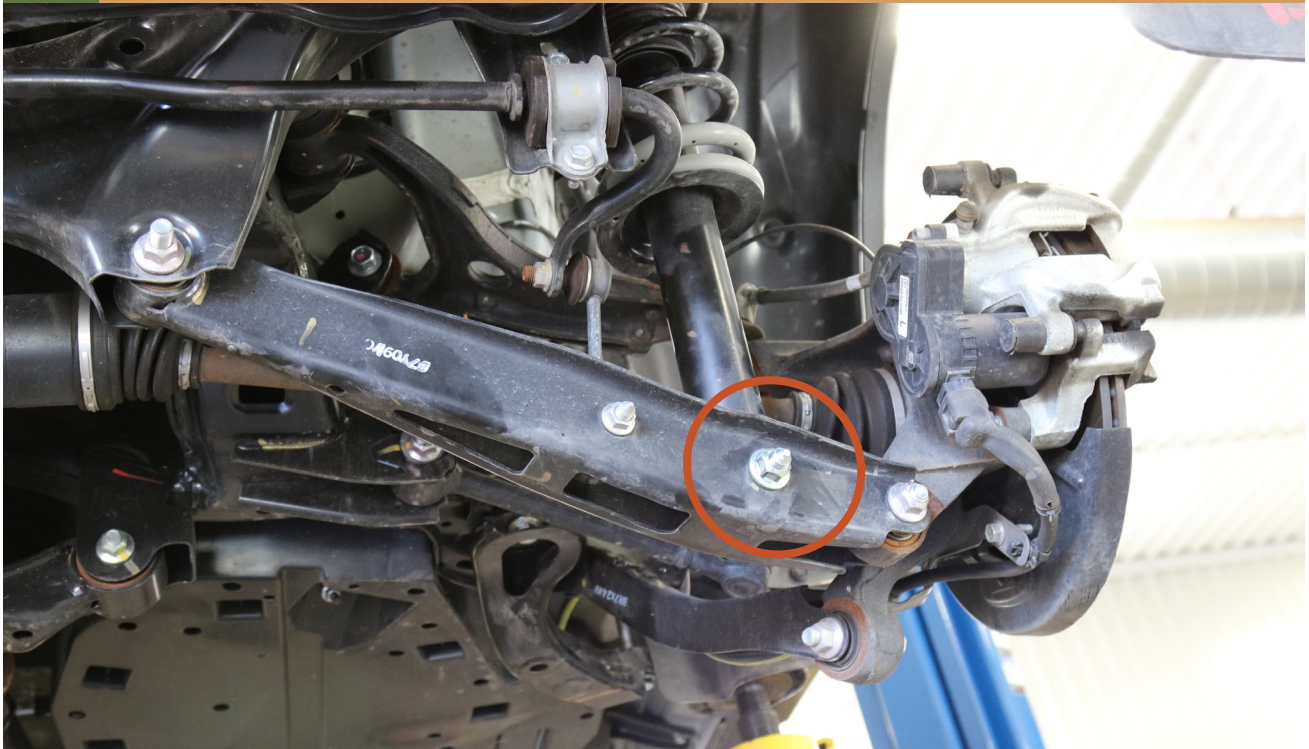


USE SUPPLIED NUTS TO INSTALL TOP PLATES



29

RE ATTACH STRUT TO LOWER SUSPENSION ARM



30

REPLACE THE FACTORY EXHAUST HANGERS WITH THE SUPPLIED ONES



31

RE INSTALL TRUNK FLOORING



INSTALLATION COMPLETE





NOTES:

****Tighten all the bolts to the manufacturer's specifications with a Torque Wrench****

**Double check your work.
Reinstall the wheels and be sure to tighten
the nuts with a torque wrench.**

Wheel alignment is required after installation.

**Products warnings:
<https://lpaventure.com/pages/products-warnings>**

**Limited product warranty:
<https://lpaventure.com/pages/limited-prod->**



You have completed the installation.
Thank you for your interest
in our products.

For all requests, information or
assistance: Contact our team
by phone at
1 (866) 562-1316

We are available Monday to Friday
Between 8AM and 5PM (EST).

Or by email at :
SALES@LPAVENTURE.COM
WWW.LPAVENTURE.COM

NOW, ENJOY THE RIDE!