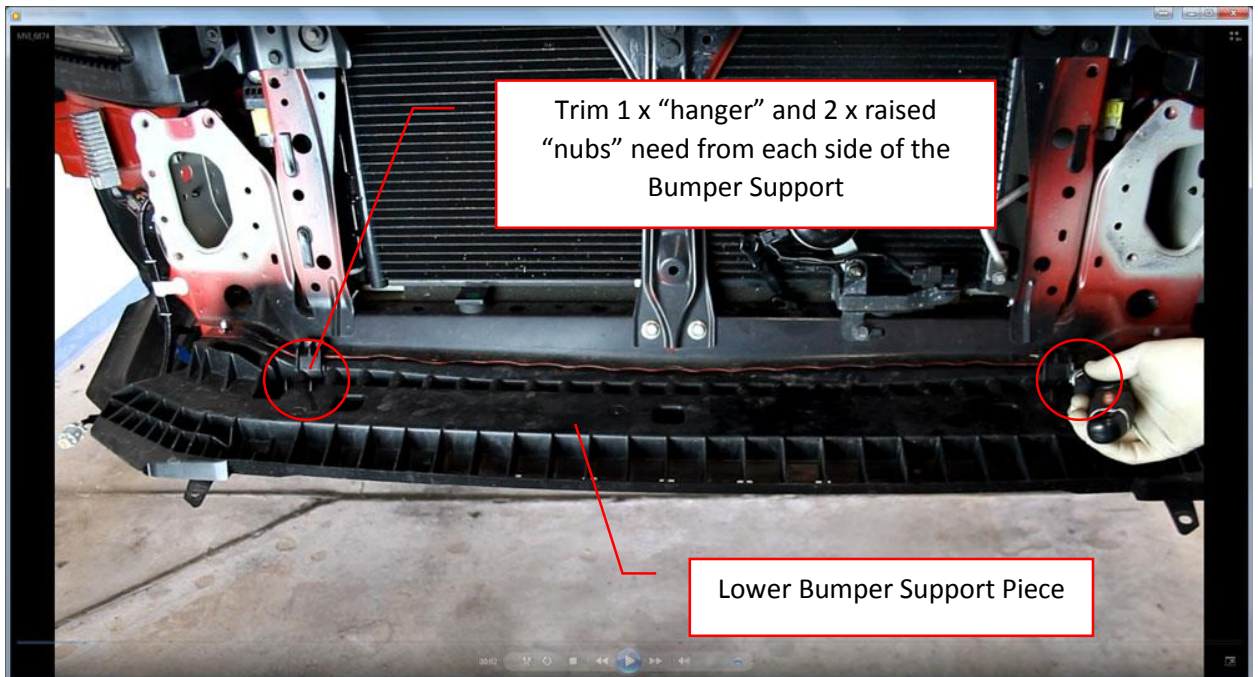


2015+ WRX Front Mount Intercooler Installation Video Addendum

Step 14: Trimming Lower Bumper Support Piece:



Step 22: Washer Fill Neck Pre-Assembly:

Assemble the two machined aluminum components to the silicone piece as shown below. Use one of the included 24-38mm Worm Drive Hose Clamp to secure lower piece. You do not need to clamp the upper piece.



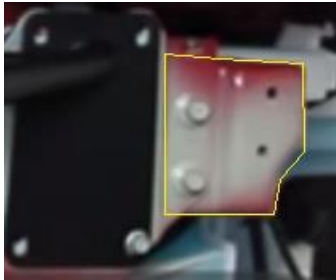
Re-use the two (2) o-rings from the factory Fill Neck on the TurboXS Fill Neck.

Step 23: Crashbeam Reinforcement Piece location:

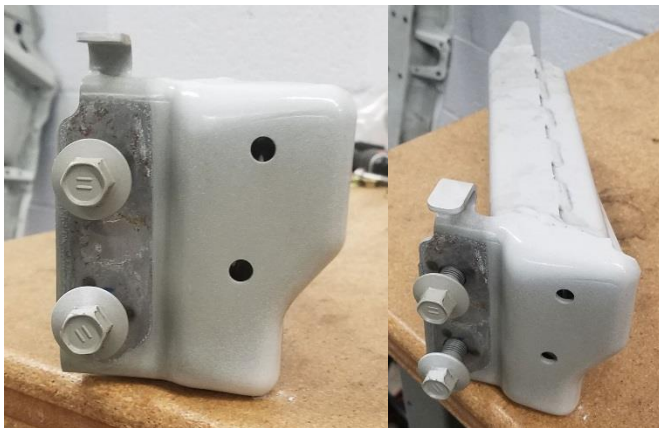
The video does not show the removal of this additional piece.



Piece to be removed outlined in Yellow:



Pictures of the piece to be removed off the car:



Step 24: Fuel Line Bracket Location:

The fuel line bracket is located here on the driver's side near the strut tower:



It is a two-piece bracket with two (2) bolts bolting the upper part of the bracket to the lower part of the bracket into the strut tower. To gain more clearance for the intercooler pipe to run under the fuel lines, remove both bolts, move the upper bracket "up" so that the lower bolt hole on the upper bracket aligns with the upper bolt hole on the lower bracket and screw them together.