



GrimmSpeed Install Guide Series
Installing the Lightweight Battery Mount Kit - Subaru 08-18 WRX/STI
Updated 5/25/18



Introduction:

This guide will illustrate the installation of the GrimmSpeed Subaru WRX/STI Lightweight Battery Mount Kit. The difficulty here is medium, so take your time and enjoy the job! Install time is around 60-90 minutes.

Tools:

The tools listed below are suggested for this task. Optional tools are noted.

- 10mm Socket Wrench
- 3mm and 12mm Allen Wrench

You can also find a video of the install on our youtube channel

NOTE:

Installation on 2015+ Subaru WRX/STI models require a small amount of trimming to the positive battery terminal. These steps start at #20.

08-14 Subaru WRX/STI battery terminals do not require any trimming modifications.

Procedure:



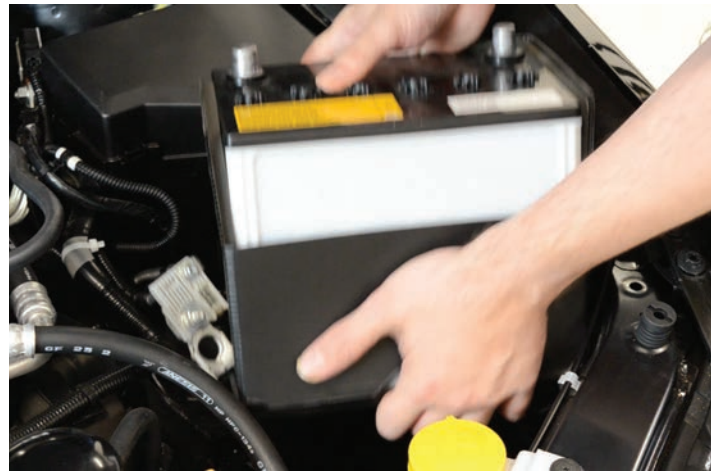
1. Start by removing the plastic cover on the positive battery terminal and loosening the connection



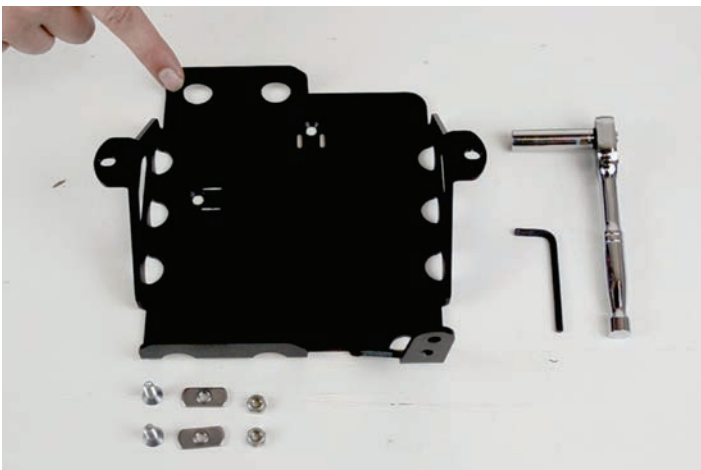
2. Remove the positive and negative terminals and tuck them behind the battery



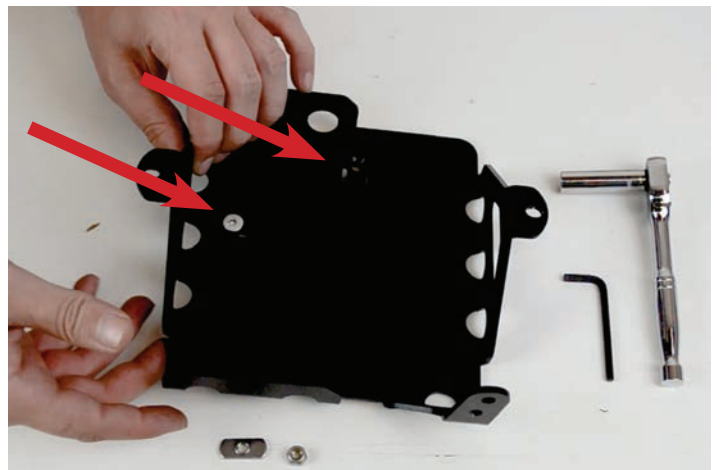
3. Use your 10mm deep well socket to loosen and remove the nuts on the OEM battery tie down.



4. Holding the battery from the bottom, remove the battery and OEM tray from the car.



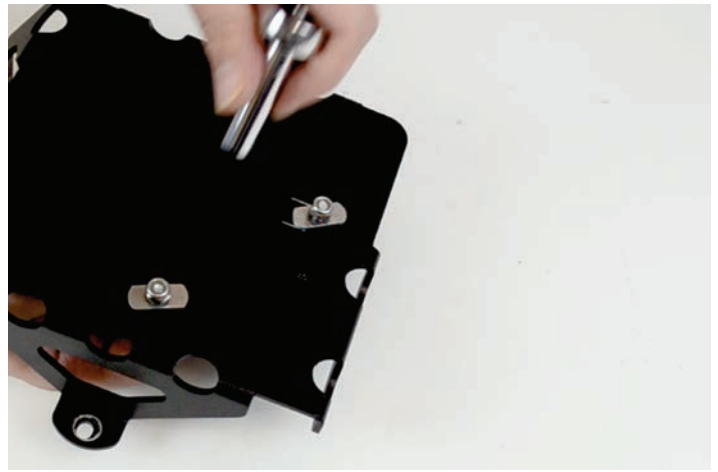
5. Begin prepping the new tray for installation. You will need the battery tray base, 2x M6x1 flathead allen bolts, 2x T-Nuts, 3mm allen wrench and 10mm socket



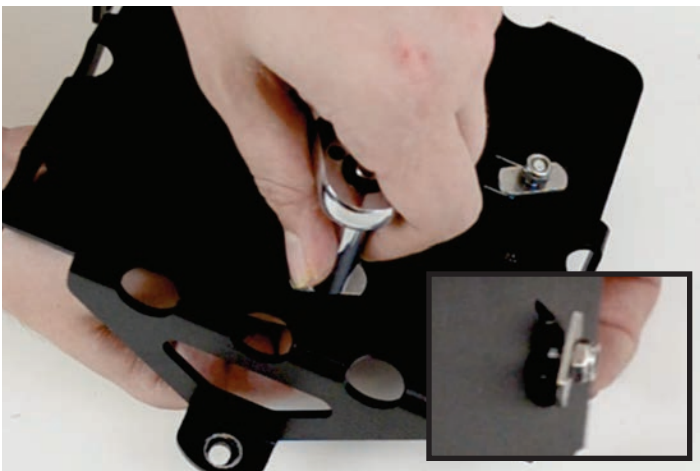
6. Insert the M6x1 allen head bolts into the mounting holes.



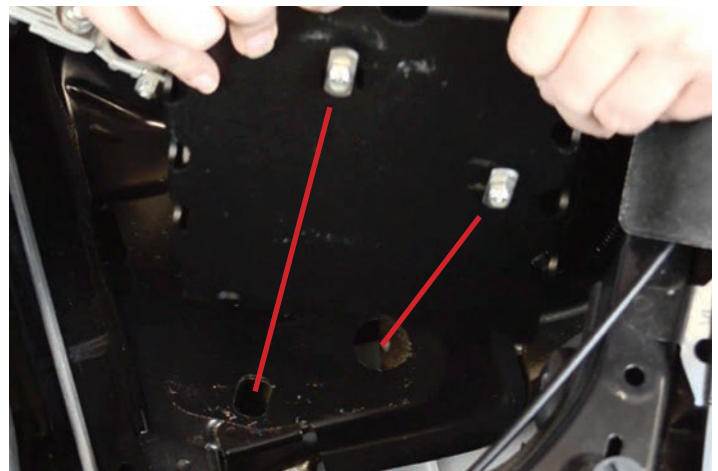
7. Flip the tray over and thread the t-nuts on the bolts, nipple side down.



8. Next thread the locking nut on to the tip of the bolt, just until you hit the locking threads.



9. Use your 10mm deep well socket and your allen wrench to tighten the lock nuts so they won't come off. Do not fully tighten these. Back the t-nuts off the tray and on to the locking nuts.



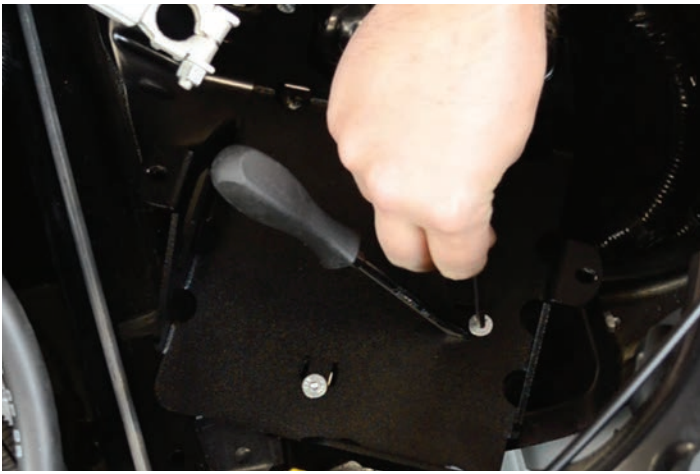
10. Point both of the t-nuts down and place the tray into position, making sure that each t-nut falls into the corresponding hole.



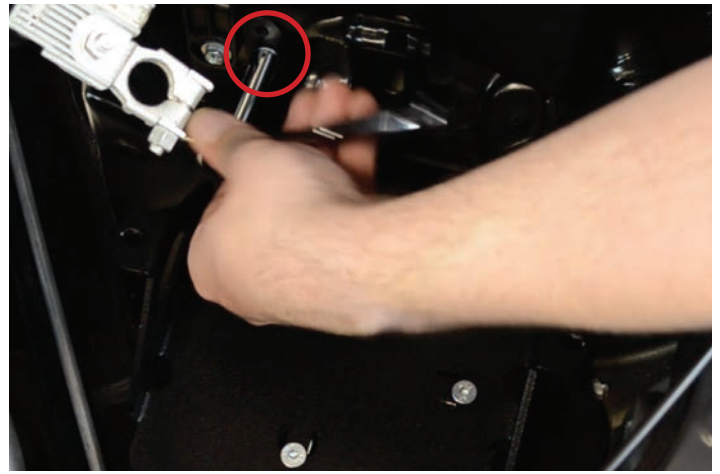
11. Wiggle the tray to make sure that the t-nuts have fallen into the holes and are grabbing like they should.



12. Once the tray is sitting properly in the 2 mounting holes, insert the M6 10mm bolt the side mounting point and thread it through the tray, into the chassis.



13. Wedge a flathead screwdriver into the slots next to the mounting holes and use your allen wrench to tighten the two bolts. The screwdriver should prevent the t-nut from spinning.



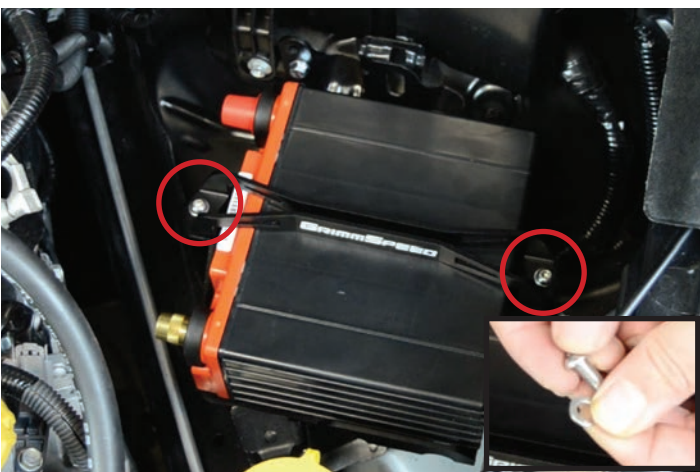
14. Go back and tighten the chassis bolt down with the 10mm socket.



15. Install the included terminals on to your PC680 battery with a 12mm allen. Make sure to use the correct terminal for the positive and negative sides of the battery.



16. Lay the battery down on its side. Terminals facing up.



17. Place the included GrimmSpeed tiedown on top of the holes and insert the two button head allen bolts and washers into the holes.



18. Thread the included nut on to each bolt. Then, using your 10mm wrench and 3mm allen wrench tighten the bracket on each side evenly.



19. Give the battery tray a shake to make sure everything is tight and securely in place.



20. The OEM Terminal on your WRX/STI is tapered and won't fit properly on your PC680 Battery unless you modify it.



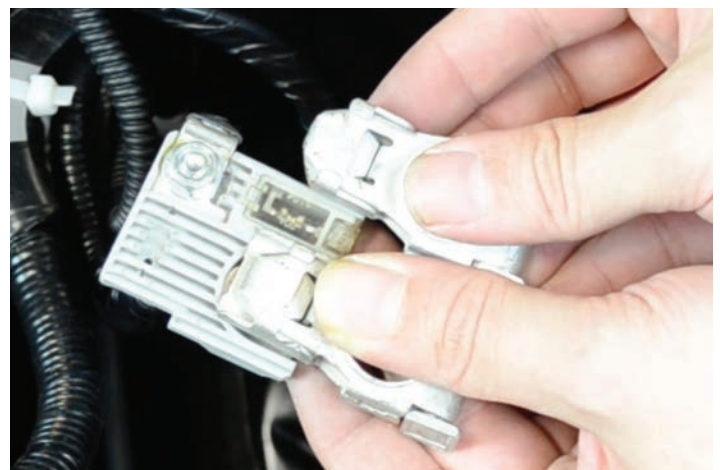
21. Undo the 10mm bolt on the positive side of the terminal.



22. When you pull the terminal apart, it will separate into 3 pieces. Flip the terminal around so it is facing the other direction.



23. If you are installing this kit on a 2015+ WRX or STI you will notice that the terminal can not be flipped due to the 90 degree edges.



24. Use a Dremel or Hacksaw to trim off the edges so the terminal will fit inside the plastic fitting.
NOTE: ONLY THE 2015+ WRX/STI HAS THIS PLASTIC FITTING AND REQUIRES TRIMMING. 2008-2014 WRX/STI DOES NOT REQUIRE ANY TRIMMING ON THE TERMINALS



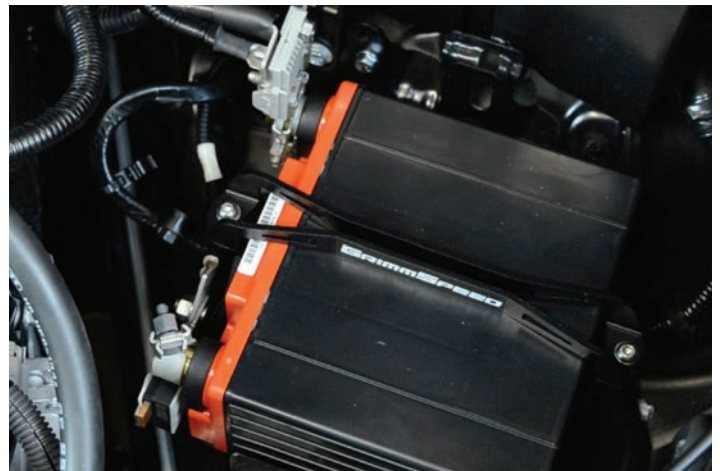
25. Now that the trimming is done you can reassemble the terminal then thread and tighten the bolt back on.



26. Since we have reversed the terminal, the tightening bolt will be on the opposite side and will contact the engine bay.



27. To make it easier to attach and tighten the terminal we need to remove the bolt and washer and flip it in the other direction.



28. Now you can install the negative and positive terminals on to the new battery.



29. And you done! Enjoy your new Lightweight Battery!